

Winter Wonder Mittens

designed by Amy Loberg

Classic Elite Yarns

The Yarn

Fresco – 60% wool, 30% baby alpaca, 10% angora
Fresco is a smooth and even 3-ply sport weight yarn. The plies are twisted together tightly enough to make a firm, springy yarn, but not so tightly that the yarn loses its lofty, soft hand. The fiber blend—wool (for warmth and strength), alpaca (for loft and sheen), and a bit of angora (to provide a soft halo)—makes a yarn that's warm, soft, and slightly fuzzy

The Pattern

Skill Level: Intermediate
Shown in size M.

SIZES: Adult S (M, L)

Finished Meas: 6¾ (7¾, 8¾)"
circumference around thumb gusset
(see Note 2)

YARN:

Fresco by **Classic Elite** (60% wool, 30% baby alpaca, 10% angora: 50 gram hank = approx 164 yards)

- 1 hank Main Color (MC) - 5353 Strawberry
- 1 hank Contrast Color (CC) - 5301 Parchment

NEEDLES AND OTHER MATERIALS:

Set of 4 double pointed needles (dpns) in size US 2 (3, 4) [2.75 (3.25, 3.5) mm] **or size to obtain gauge.**
Two circular knitting needles (24") in size US 2 (3, 4) [2.75 (3.25, 3.5) mm] (see Note 1)
Stitch marker
Waste yarn

GAUGE: 32 sts in Fair Isle Pattern = 3½" with size US 2 needles (2.75 mm); 32 sts in Fair Isle Pattern = 4" with size US 3 (3.25 mm) needles; 32 sts in Fair Isle Pattern = 4½" with size US 4 needles (3.5 mm) (see Note 2).
Take time to save time, check your gauge.





ABBREVIATIONS:

- approx:** approximately
- beg:** begin(ing)
- CO:** cast on
- cont:** continue
- dec('d):** decrease(d)
- LH:** left hand
- k:** knit
- patt:** pattern
- RH:** right hand
- rem:** remain(ing)
- rep:** repeat
- rnd(s):** rounds
- st(s):** stitch(es)
- WS:** wrong side

SPECIAL TERMS:

- k2tog:** knit 2 sts together (1 st dec'd).
- m1: (make 1)** Insert LH needle under horizontal strand between st just worked and next st, from the front to the back, knit through the back loop (1 st increased).
- s2kp:** Slip 2 sts knitwise, from the LH needle to the RH needle, k1, pass slipped sts over k1 (2 sts dec'd).
- ssk: (slip, slip, knit)** Slip 2 sts, 1 at a time, knitwise to the RH needle; return sts to LH needle in turned position and knit them together through the back loops (1 st dec'd).
- yo:** yarn over (1 st increased).

PATTERN STITCHES:

- Circular Stockinette Stitch (St st):**
Knit all sts, every rnd.
- Fair Isle Pattern:**
See charts.
- Kitchener Stitch:**
Visit our website: <http://www.classiceliteyarns.com/WebLetter/Stitches/Grafting/Grafting.php> for grafting instructions.

NOTES:

1. The mittens are worked in the round on double pointed needles. If you prefer, you can work the mittens using two circular needles. To work mittens on two circulars, place 31 sts on Needle 1 and 29 sts on Needle 2.
- 2: Mittens are worked using the same number of sts for all sizes. The finished measurements for each size are achieved by using different needle sizes.
3. The colorwork pattern uses stranded (Fair Isle) technique, for long color repeats, catch unused color strand.

RIGHT MITTEN

With MC and appropriate dpns for your size, CO 60 sts. Arrange sts as follows: 15 sts on Needle 1, 16 sts on Needle 2 and 29 sts on Needle 3. Place marker (pm) and join in the rnd, being careful not to twist sts. Work rnds 1 – 35 of Mitten chart. **Place Thumb, Rnd 36:** K1 in MC, k13 with waste yarn and slip these 13 sts back to LH needle and knit in MC, work in patt to end of rnd. Work through Rnd 84 of chart – 10 sts rem. Break yarn leaving approx 10" tail and graft top of mitten using Kitchener St.

THUMB

Carefully remove waste yarn and distribute 26 thumb sts as evenly as possible to 3 dpns. Join MC at the inside of thumb and work 13 sts in MC. Join CC at the outside of thumb and work Rnd 1 of Thumb chart to end of rnd. Work rnds 2 – 22 of Thumb chart – 6 sts rem. Break yarn leaving approx 6" tail. Thread tail through rem sts, draw up tightly and fasten off.

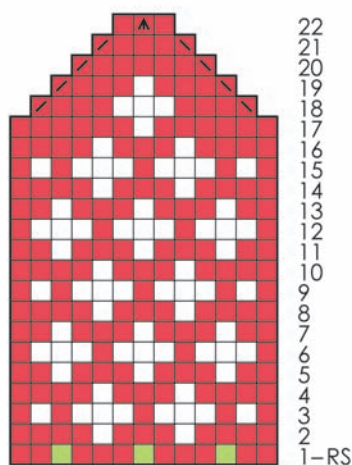
LEFT MITTEN

Work as for right mitten until rnd 35 is complete. **Place Thumb, Rnd 36:** Work 17 sts in patt, k13 with waste yarn and slip these 13 sts back to LH needle and knit in MC, work in patt to end of rnd. Cont as for right mitten.

FINISHING

Use tails to close up any holes where thumb joins the hand. **Cuff:** Fold hem to WS of mitten at picot rnd and carefully slip stitch in place. Block to measurements.

Fair Isle Thumb Chart
(22 rnds)



- Main Color – 5353 Strawberry
- Contrast Color – 5310 Parchment
- ☑ k2tog
- ▢ ssk
- ⊙ yo
- M m1
- ▲ s2kp
- On Hand
Work these sts in MC above thumb
- On Thumb
Work these sts in MC on inside of thumb
- Work these sts in CC on outside of thumb

Fair Isle Mitten Chart
(84 rnds)

Classic Elite Yarns

