

Classic Elite Yarns

Wicked Eyelet Rib Vest



Designed by: Joëlle Meier Rioux

SIZES: Small (Medium, Large, Extra Large)

Finished Measurements: 35 (39, 43, 47)"

MATERIALS:

Wicked by **Classic Elite** (100% cashmere; 50 gram hank = approx 165 yards)

- 4 (5, 5, 5) hanks 10382 Fuchsia

Needles

- One pair size US 5 (3.75 mm)

Or size to obtain gauge

- One 16" circular size US 4 (3.5 mm)
- Stitch markers
- 7 (8, 7, 7) 3/8" buttons

GAUGE: 24 sts and 32 rows = 4" in Eyelet Stockinette Stitch. **Take time to save time, check your gauge.**

SPECIAL TERMS:

k2tog: Knit 2 sts together (1 st decreased).

ssk: (slip, slip, knit) Slip 2 sts, 1 at a time, knitwise to the RH needle; return sts to LH needle in turned position and knit them together through the back loops (1 st decreased).

RT: (right twist) Knit 2 sts together without slipping them off LH needle, knit the first st again, slip both sts from needle.

yo: Yarn over (1 st increased).

p2tog: Purl 2 sts together (1 st decreased).

PATTERN STITCHES:

Stockinette Stitch (St st): Knit on RS, purl on WS.

Mock Cable Rib: (multiple of 10 sts)

See chart on page 2; beg and end where indicated for your size.

Eyelet Rib: (multiple of 10 sts)

See chart on page 2; beg and end where indicated for your size.

Eyelet Stockinette Stitch: (multiple of 10 sts)

See chart on page 2; beg and end where indicated for your size.

Reverse Stockinette Stitch (Rev St st): Purl on RS, knit on WS.

Left Front Twisted Rib Edge: (5 st panel)

Row 1: (RS) k2, p2, k1.

Row 2: Slip 1 st knitwise wyib, k2, p2.

Row 3: RT, p2, k1.

Row 4: Rep Row 2.

Rep Rows 1–4 for LF Twisted Rib Edge.



ABBREVIATIONS

approx—approximately

beg—begin(ning)

BO—bind off

CO—cast on

dec—decrease

EOR—every other row

est—establish(ed)

k—knit

k2tog—see Special Terms

LF—Left Front

LH—Left Hand

meas—measures

p—purl

p2tog—see Special Terms

pc—piece

pm—place marker

rep—repeat

Rev St st—Reverse Stockinette Stitch

RF—Right Front

RH—Right Hand

RS—Right Side

RT—see Special Terms

ssk—see Special Terms

st(s)—stitch(es)

St st—Stockinette Stitch

st(s)—stitch(es)

WS—Wrong Side

wyib—with yarn in back

yo—yarn over

Buttonband Rib: (5 st panel)

Row 1: (RS) K2, p2, k1.
 Row 2: Slip 1 st knitwise wyib, k2, p2.
 Rep Rows 1 and 2 for Buttonband Rib.

Right Front Twisted Rib Edge: (5 st panel)

Row 1: (RS) Slip 1 st knitwise wyib, p2, k2.
 Row 2: P2, k3.
 Row 3: Slip 1 st knitwise wyib, p2, RT.
 Row 4: Rep Row 2.
 Rep Rows 1–4 for RF Twisted Rib Edge.

Buttonhole Rib: (9 st panel)

Row 1: (RS) Slip 1 st knitwise wyib, p2, k2, yo, p2tog, k2.
 Row 2 and all WS rows: P2, k2, p2, k3.
 Row 3, 5, 7, 9, 11: Slip 1 st knitwise wyib, [p2, k2] 2 times.
 Row 12: Rep Row 2.
 Rep Rows 1–12 for Buttonhole Rib.

NOTE:

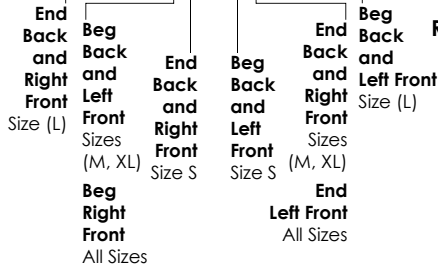
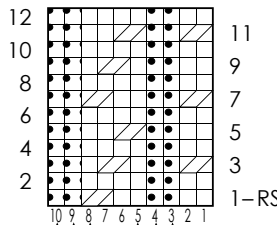
Slip first st at each armhole edge every row.

BACK

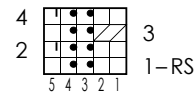
CO 106 (118, 130, 142) sts. **(WS) Foundation Row:** P0 (0, 1, 0), k0 (0, 2, 0), p5 (1, 4, 3), *k2, p2, k2, p4; rep from * to last 1 (7, 3, 9) sts, k0 (2, 0, 2), p0 (2, 0, 2), k0 (2, 2, 2), p1 (1, 1, 3). **Est Mock Cable Rib:** (RS) K1 (1, 1, 3) (edge sts, keep in St st throughout), beg and end Row 1 of Mock Cable Rib where indicated on chart for your size, work 104 (116, 128, 136) sts, k1 (1, 1, 3) (edge sts, keep in St st throughout). Work even as est, until pc meas approx 3½" from beg, end WS Row 4 of Mock Cable Rib. **Est Eyelet Rib:** (RS) K1 (1, 1, 3) (edge sts), beg and end Row 1 of Eyelet Rib where indicated on chart for your size, work 104 (116, 128, 136) sts, k1 (1, 1, 3) (edge sts). Work even as est, until pc meas approx 8¾" from beg, end WS



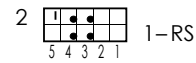
Mock Cable Rib Chart
 (multiple of 10 sts; 12 row rep)



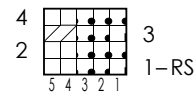
Left Front Twisted Rib Edge Chart
 (panel of 5 sts; 4 row rep)



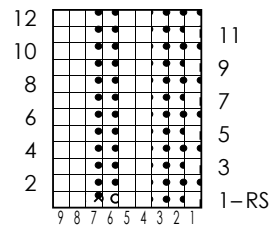
Buttonband Rib Chart
 (panel of 5 sts; 2 row rep)



Right Front Twisted Rib Edge Chart
 (panel of 5 sts; 4 row rep)

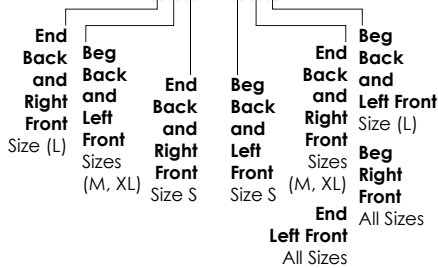
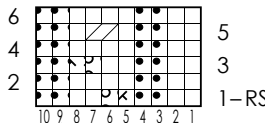


Buttonhole Rib Chart
 (panel of 9 sts; 12 row rep)

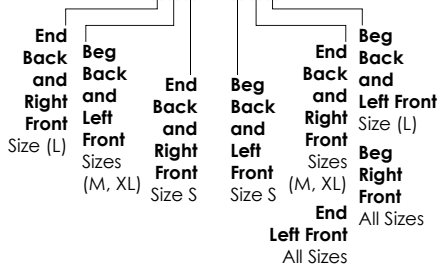
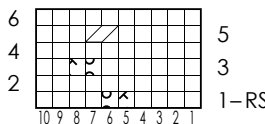


- Knit on RS, purl on WS
- Purl on RS, knit on WS
- k2tog (see Special Terms)
- ssk (see Special Terms)
- yarn over
- Slip 1 st knitwise wyib
- p2tog (see Special Terms)
- RT (see Special Terms)

Eyelet Rib Chart
 (multiple of 10 sts; 6 row rep)



Eyelet St st Chart
 (multiple of 10 sts; 6 row rep)



Row 6 of Eyelet Rib. **Est Eyelet St st:** (RS) K1 (1, 1, 3), beg and end Row 1 of Eyelet St st where indicated on chart for your size, work 104 (116, 128, 136) sts, k1 (1, 1, 3). Work even as est until pc meas 11½ (12½, 12, 11½)" from beg, end RS row. **Est Armhole Trim:** (WS) Work as est to last 11 (12, 14, 16) sts, knit to

end. **Shape Armholes:** (RS) BO 9 (10, 12, 14) sts purlwise, p3 (armhole trim, keep in Rev St st throughout), work as est to last 11 (12, 14, 16) sts, purl to end. (WS) BO 9 (10, 12, 14) sts knitwise, k3 (armhole trim, keep in Rev St st throughout), work to end as est. (RS) Dec 1 st each side EOR 6 (8, 8, 9) times as follows: Slip 1 st knitwise wyib, p2tog, p1, work as est to last 4 sts, p1, p2tog, k1. (WS) Slip 1 st knitwise wyib, k2, work as est to last 3 sts, k3—76 (82, 90, 96) sts rem. Work even as est, maintaining armhole trim, slipping first and knitting last st of each row, until armholes meas 8 (8½, 9, 9½)" from beg of shaping, end WS row. Place marker (pm) each side of 38 (38, 40, 40) sts. **Shape Neck:** (RS) Work to marker as est, join second ball of yarn, BO center sts, work to end—19 (22, 25, 28) sts rem each side. At each neck edge, BO 5 sts 1 time; **and at the same time**, on first row of neck shaping, **Shape Shoulders:** (RS) At armhole edges, BO 5 (6, 7, 8) sts 2 times, then 4 (5, 6, 7) sts 1 time.

LEFT FRONT

CO 56 (62, 68, 74) sts. **(WS) Foundation Row:** K3, [p2, k2] 2 times, *p4, k2, p2, k2; rep from * to last 5 (1, 7, 3) sts, p5 (1, 4, 3), k0 (0, 2, 0), p0 (0, 1, 0). **Est Mock Cable Rib:** (RS) K1 (1, 1, 3) (edge sts, keep in St st throughout), beg and end Row 1 of Mock Cable Rib where indicated on chart for your size, work across 50 (56, 62, 66) sts, beg Row 1 of LF Twisted Rib Edge, work across 5 sts. Work even as est, until pc meas approx 3½" from beg, end WS Row 4 of Mock Cable Rib. **Est Eyelet Rib and Buttonband Rib:** (RS) K1 (1, 1, 3) (edge sts) beg and end Row 1 of Eyelet Rib where indicated on chart for your size, work across 50 (56, 62, 66) sts, beg Row 1 of Buttonband Rib, work across 5 sts. Work even as est, until pc meas approx 8¾" from beg, end WS Row 6 of Eyelet Rib. **Est Eyelet St st:** (RS) K1 (1, 1, 3), beg and end Row 1 of Eyelet St st where indicated on chart for your size, work across 50 (56, 62, 66) sts, work 5 sts in Buttonband Rib as est. Work even as est until pc meas 11½ (12½, 12, 11½)" from beg, end RS row. **Est Armhole Trim:** (WS) Work as est to last 11 (12, 14, 16) sts, knit to end. **Shape Armhole:** (RS) BO 9 (10, 12, 14) sts purlwise, p3 (armhole trim, keep in Rev St st throughout), work to end as est. (WS) Work as est to last 3 sts, k3. (RS) At armhole edge, dec 1 st EOR 6 (8, 8, 9) times as follows: Slip 1 st knitwise wyib, p2tog, p1, work to end as est; **and at the same time**, when armhole meas 1¼ (1¾, ¾, 1¼)" from beg of shaping, end RS row; **Shape Neck:** (WS) At neck edge, BO 9 sts 1 time, 5 sts 1 time, 3 sts 2 times, 2 sts 1 time, then on RS rows dec 1 st EOR 3 times, every 4 rows 1 (1, 2, 2) times, every 6 rows 1 time as follows: Work as est to last 3 sts, ssk, k1—14 (17, 20, 23) sts rem after all shaping. Work even until armhole meas 8 (8½, 9, 9½)" from beg of shaping, end WS row. **Shape Shoulder:** (RS) As for Back.

RIGHT FRONT

CO 56 (62, 68, 74) sts. **(WS) Foundation Row:** P0 (0, 1, 0), k0 (0, 2, 0), p5 (1, 4, 3), k2, p2, k2, *p4, k2, p2, k2; rep from * to last 5 sts, p2, k3. **Est Mock Cable Rib:** (RS) Beg Row 1 of RF Twisted Rib Edge, work across 5 sts, beg and end Row 1 of Mock Cable Rib where indicated on chart for your size, work across 50 (56, 62, 66) sts, k1 (1, 1, 3) (edge sts, keep in St st throughout). Work even as est, until pc meas approx 3½" from beg, end WS Row 4 of Mock Cable Rib. **Est Eyelet Rib and Buttonhole Rib:** (RS) Beg Row 1 of Buttonhole Rib, work across 9 sts, beg and end Row 1 of Eyelet Rib where indicated on chart for your size, work across 46 (52, 58, 62) sts, k1 (1, 1, 3) (edge sts). Work even as est, until pc meas approx 8¾" from beg, end WS Row 6 of Eyelet Rib. **Est Eyelet St st:** (RS) Cont working Buttonhole Rib across 9 sts as est, beg and end Row 1 of Eyelet St st where indicated on chart for your size, work across 46 (52, 58, 62) sts, k1 (1, 1, 3) (edge sts). Work even as est until pc meas 11½ (12½, 12, 11½)" from beg, end WS row. **Est Armhole**

Trim: (RS) Work as est to last 11 (12, 14, 16) sts, purl to end. **Shape Armhole:** (WS) BO 9 (10, 12, 14) sts knitwise, k3 (armhole trim, keep in Rev St st throughout), work to end as est. (RS) At armhole edge, dec 1 st EOR 6 (8, 8, 9) times as follows: Work as est to last 4 sts, p1, p2tog, k1. (WS) Slip 1 st knitwise wyib, k2, work to end as est; **and at the same time**, when armhole meas approx 1¼ (1¾, ¾, 1¼)" from beg of shaping, end WS Row 2 of Buttonhole Rib—7 (8, 7, 7) buttonholes; **Shape Neck:** (RS) At neck edge, as for Left Front as follows: K1, k2tog, work to end—14 (17, 20, 23) sts rem after all shaping. Work even until armhole meas 8 (8½, 9, 9½)" from beg of shaping, end RS row. **Shape Shoulder:** (WS) As for Back.

FINISHING

Block pieces to measurements, being careful to stretch the rib only slightly (cashmere will relax considerably through steaming). Sew shoulder and side seams. **Neck Trim:** With smaller needle and RS facing, beg at Right Front, pick up and knit 52 (52, 61, 61) sts along Right Front neck, 54 (54, 56, 56) sts

along Back neck, 52 (52, 61, 61) sts along Left Front neck—158 (158, 178, 178) sts. (WS) Knit. (RS) BO all sts purlwise. Sew buttons opposite buttonholes.

