

# Classic Elite Yarns

## Valentine Mug Cozy



**Designed by:** Kristen TenDyke

**SIZES:** One Size

**Finished Measurements:** 10" long x 4" tall

**MATERIALS:**

**Renaissance** by **Classic Elite** (100% wool; 50 gram hank = approx 110 yards)

- 1 hank Main Color (MC) 7155 Renaissance Red
- 1 hank Contrast Color (CC) 7119 Rose

**Needles**

- One pair each size US 8 (5 mm)

**Or size to obtain gauge**

- Cable needle (cn)

**GAUGE:** 19 sts and 22 rows = 4" in Fair Isle Stockinette Stitch (St st); 8 sts in Cable Panel = 1 1/4". **Take time to save time, check your gauge.**

**SPECIAL TERMS:**

**C4F:** Slip 2 sts to cn, hold in front; k2; k2 from cn.

**C4B:** Slip 2 sts to cn, hold in back; k2; k2 from cn.

**PATTERN STITCHES:**

**Rib Pattern: (panel of 50 sts)**

(also, see chart)

Row 1: (WS) P1, [k2, p2] 2 times, k2, p1, [k2, p2] 6 times, k2, p1, [k2, p2] 2 times, k2, p1.

Row 2: Knit the knit sts and purl the purl sts.

Rep Row 2 for Rib Patt.

**Stockinette Stitch (St st):** Knit on RS, purl on WS.

**Heart Panel: (panel of 19 sts)**

Work all sts in Fair Isle St st.

(also, see chart)

Row 1: (RS) MC 1, CC 1, MC 3, CC 1, MC 7, CC 1, MC 3, CC 1, MC 1.

Row 2: (WS) CC 3, MC 1, CC 3, MC 2, CC 1, MC 2, CC 3, MC 1, CC 3.

Row 3: MC 1, CC 1, MC 3, CC 1, MC 2, CC 3, MC 2, CC 1, MC 3, CC 1, MC 1.

Row 4: MC 7, CC 5, MC 7.

Row 5: MC 1, CC 1, MC 4, CC 7, MC 4, CC 1, MC 1.

Row 6: CC 3, MC 2, CC 9, MC 2, CC 3.

Row 7: MC 1, CC 1, MC 2, CC 11, MC 2, CC 1, MC 1.

Row 8: MC 4, CC 11, MC 4.

Rows 9 and 10: MC 3, CC 13, MC 3.

Row 11: MC 3, CC 6, MC 1, CC 6, MC 3.

Row 12: MC 4, CC 5, MC 1, CC 5, MC 4.

Row 13: MC 5, CC 3, MC 3, CC 3, MC 5.

Rows 14 and 16: MC 1, [CC 1, MC 7] 2 times, CC 1, MC 1.

Row 15: [CC 3, MC 5] 2 times, CC 3.

Row 17: MC 19.

Work Rows 1–17 for Heart Panel.

**Cable Panel: (panel of 8 sts)**

(also, see chart)

Row 1: (RS) P1, C4F, k2, p1.

Row 2: K1, p6, k1.

Row 3: P1, k2, C4B, p1.

Row 4: Rep Row 2.

Rep Rows 1–4 for Cable Panel.

**COZY**

With MC, CO 50 sts. **(WS) Begin Rib Patt;** work even for 3 rows, end WS row. **Est Patt:** (RS) With MC, k2; with MC and CC, work 19 sts in Heart Panel; with MC, work 8 sts in Cable Panel; with MC and CC, work 19 sts in Heart Panel; with MC, k2. Work as est for 16 rows, end RS Row 17 of Heart Panel and RS Row 1 of Cable Panel. **Change to Rib Patt;** (WS) work even for 2 rows, end RS row. (WS) BO all sts in Rib.

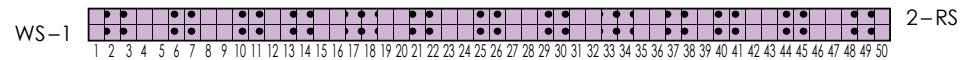
**FINISHING**

Block piece to measurements. Sew sides tog 1/2" up from bottom and 1/4" down from top, or to fit your mug



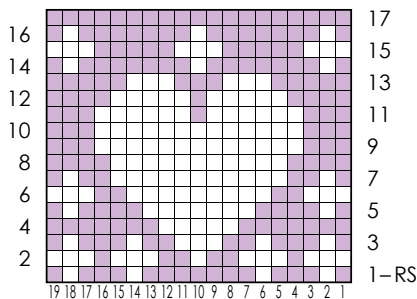
**Rib Chart**

(panel of 50 sts; 2 row rep)



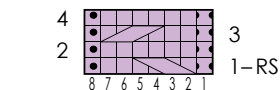
**Heart Chart**

(panel of 19 sts; 17 rows)



**Cable Chart**

(panel of 8 sts; 4 row rep)



- MC Knit on RS, purl on WS
- MC Purl on RS, knit on WS
- CC Knit on RS, purl on WS
- ▨ With MC, Slip 2 sts to cn, hold in front; k2; k2 from cn
- ▩ With MC, Slip 2 sts to cn, hold in back; k2; k2 from cn

**ABBREVIATIONS**

- approx** – approximately
- BO** – bind off
- C4B** – see Special Terms
- C4F** – see Special Terms
- CC** – Contrast Color
- cn** – cable needle

- CO** – cast on
- est** – establish(ed)
- k** – knit
- MC** – Main Color
- p** – purl
- patt** – pattern

- RS** – Right Side
- st(s)** – stitch(es)
- St st** – Stockinette Stitch
- WS** – Wrong Side