

Woodland Turtle Cowl

designed by Meg Myers

Classic Elite Yarns

The Yarn

Woodland

65% wool, 35% nettles

Woodland, part of our Verde Collection of eco-conscious yarns, is a combination of wool and environmentally-friendly nettles. Each of these fibers takes the dye differently, giving both the neutral and vibrant colors of Woodland a heathered look.

Nettles are a perennial that requires low levels of water and little or no pesticides. Nettle fibers are similar to linen and hemp but produce a softer, silkier fabric. Nettles show color well and when mixed with wool add lightness, minimize shrinkage and are breathable.

The Pattern

Skill Level: Intermediate

Size: One size

Finished Measurements: 21" circumference at ribbed base; 28" circumference at top; 13" tall

YARN:

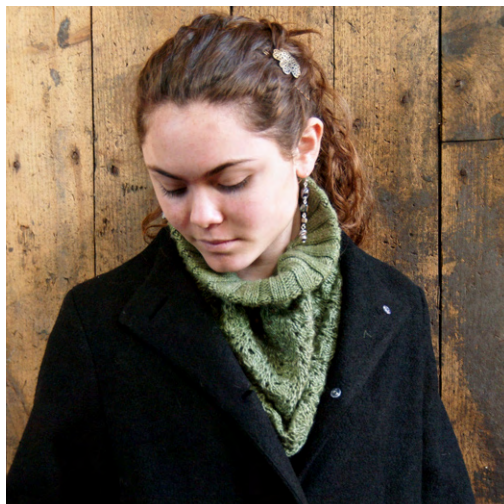
Woodland by **Classic Elite** (65% wool, 35% nettles; 50 gram ball = approx 131 yards)
3 balls 3197 Fern

NEEDLES AND OTHER MATERIALS:

Circular knitting needle (16") in size US 5 (3.75), and circular knitting needle (24") in size US 7 (4.5 mm) **or size to obtain gauge.**
Stitch marker

GAUGE: 24 sts and 32 rows = 4" in 3 x 3 rib, slightly stretched, with smaller needles; 20 sts and 26 rows = 4" in Agave Lace with larger needles .

Take time to save time, check your gauge.



Classic Elite Yarns

ABBREVIATIONS:

beg: begin(ning)

BO: bind off

CO: cast on

inc: increase

k: knit

LH: left hand

m1: (make 1) Insert LH needle under horizontal strand between st just worked and next st, from the front to the back, knit through the back loop (1 st increased)

meas: measure(s)

p: purl

pc: piece

rep: repeat

RH: right hand

rnd(s): round(s)

st(s): stitch(es)

WS: wrong side

yo: yarn over (1 st increased)

SPECIAL TERM:

Decrease 4: (dec 4) Slip the next 4 sts to the RH needle knitwise then knit the next st; pass the 4 slipped sts, one at a time, over the knit st (4 sts decreased).

PATTERN STITCHES:

3 x 3 Rib: (multiple of 6 sts)

All Rnds: *K3, p3; rep from *.

Agave Lace: (multiple of 8 sts; 4 rnd rep)

(also, see chart)

Rnd 1: Knit.

Rnd 2: *[K1, yo] twice, dec 4, yo, k1, yo; rep from *.

Rnd 3 and 4: Knit

Rep rnds 1–4 for Agave Lace.

COWL

With smaller needle, loosely CO 126 sts. Join to work in-the-rnd, place marker for beg-of-rnd, being careful to not twist sts. **Begin 3 x 3 Rib;** work even until pc meas 5" from beg. **Inc Rnd:** *K7, m1; rep from * – 144 sts.

Begin Agave Lace pattern; work one rep (rnds 1–4). **Switch to larger needles** and work 15 more reps of Agave Lace patt – 16 total reps worked.

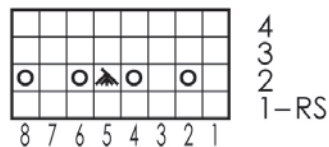
Turning rnd: With yarn in back, slip first st of rnd from LH to RH needle, bring yarn to front, slip st back from RH to LH needle and turn work. (WS) Knit 3 rnds. BO all sts loosely.

FINISHING

With WS facing, fold ribbed section in half and loosely sew CO sts to top of ribbing section. Block pc, pinning lace section open and being careful to not stretch rib section.



Agave Lace Pattern (multiple of 8 sts; 4 rnds)



□ knit

○ yo

▲ Decrease 4

(see Special Terms)