

Classic Elite Yarns

Tryst Cabled Hat



Designed by: Heather Bagni

Sizes: One Size

Finished Measurements: 21" circumference

MATERIALS:

Tryst by Classic Elite (100% cashmere; 50 gram ball = approx 125 yards)

- 3 hanks 97326 Meadow

Needles

- One pair size US 10½ (6.5 mm)

Or size to obtain gauge

- Cable needle (cn)

GAUGE: 14 sts and 20 rows = 4" in Hat Pattern, with 2 strands of yarn held together, slightly stretched. **Take time to save time, check your gauge.**

SPECIAL TERMS:

C4B: Slip 2 sts to cn, hold in back; k2; k2 from cn.
skp: Slip 1 st knitwise, from the LH needle to the RH needle, k1, pass slipped st over knit st (1 st decreased).

k2tog: Knit 2 sts together (1 st decreased).

PATTERN STITCHES:

Cable Cast-on Method: Place a slipknot on LH needle and k1, slip new st onto LH needle; *insert RH needle between first 2 sts on LH needle, k1 from this position, leave the first st on LH needle and slip new st onto LH needle. Rep from * for desired number of sts.

Cuff Pattern: (multiple of 9 sts + 1)

(also, see chart)

Row 1: (RS) K1, *p1, k1, p1, k4, p1, k1; rep from * to end.

Row 2: Knit the knit sts and purl the purl sts as they face you.

Row 3: K1, *p1, k1, p1, C4B, p1, k1; rep from * to end.

Row 4: Rep Row 2.

Rep Rows 1–4 for Cuff Patt.

Hat Pattern: (multiple of 9 sts + 1)

(also, see chart)

Row 1: (RS) K1, *p1, k4, [p1, k1] 2 times; rep from * to end.

Row 2: Knit the knit sts and purl the purl sts as they face you.

Row 3: K1, *p1, C4B, [p1, k1] 2 times; rep from * to end.

Row 4: Rep Row 2.

Rep Rows 1–4 for Hat Patt.

NOTE:

1. Hat is worked with 2 strands of yarn held together throughout.

CUFF

With Cable Cast-On Method and 2 strands of yarn held together, CO 73 sts. **(RS) Begin Cuff Pattern;** work even until pc meas approx 2½", end after WS Row 4 of Cuff Patt.

RISE

Turning Row: (RS) K1, *p1, k1, p6, k1; rep from * to end. **Note:** The RS of the Cuff is now the WS of the Hat; the ribbing on the first row of the Hat Patt will not line up with the ribbing on the turning row. **Change to Hat Pattern;** (RS) Work even until pc meas approx 9" from beg, end after WS Row 4 of Hat Patt.

CROWN

Row 1: (RS) *Skp, k4, p1, k1, p1; rep from * to last st, k1—65 sts rem.

Row 2 and all WS rows: Knit the knit sts and purl the purl sts as they face you.

Row 3: *Skp, k3, p1, k1, p1; rep from * to last st, k1—57 sts rem.

Row 5: *K2tog, k2, p1, k1, p1; rep from * to last st, k1—49 sts rem.

Row 7: K1, *k2tog; rep from * to end—29 sts rem. Thread yarn through rem sts and pull tight to close top of hat.

FINISHING

Sew up seam, making sure to reverse at turning row for cuff. Wash to remove the natural oils and soften the hat.



ABBREVIATIONS

approx – approximately

C4B – see Special Terms

CO – Cast On

cn – Cable Needle

k – knit

k2tog – see Special Terms

LH – Left Hand

meas – measures

p – purl

patt – pattern

pc – piece

rem – remain(ning)

rep – repeat

RH – Right Hand

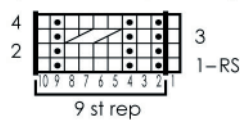
RS – Right Side

skp – see Special Terms

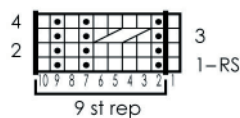
st(s) – stitch(es)

WS – Wrong Side

Cuff Chart
(multiple of 9 sts + 1; 4 row rep)



Hat Chart
(multiple of 9 sts + 1; 4 row rep)



- Knit on RS, purl on WS
- Purl on RS, knit on WS
- ▨ C4B (see Special Terms)