

Classic Elite Yarns

Sundance Market Bag



Designed by: Cecily Glowik

SIZE: One Size

Finished Measurements: 16½" wide by 17" tall (excluding handles)

Sundance by **Classic Elite** (50% cotton, 50% microfiber; 50 gram ball = approx 83 yards)

- 7 balls 6216 Candlelight

Needles

- One pair each size US 7 and 8 (4.5 mm and 5 mm)

Or size to obtain gauge

- Two double pointed needles (dpn) size US 7 (4.5 mm) for I-Cord handles
- Stitch markers

GAUGE: 18 sts and 21 rows = 4" in Star Mesh Rib using larger needles; 21 sts and 28 rows = 4" in 1 x 1 Rib using smaller needles. **Take time to save time, check your gauge.**

SPECIAL TERMS:

- p2tog:** Purl 2 sts together (1 st decreased).
- s2kp:** Slip 2 sts knitwise, one at a time, to the RH needle, k1, pass 2 slipped sts over knit st (2 sts decreased).
- ssk:** (slip, slip, knit) Slip 2 sts, one at a time, knitwise to the RH needle; return sts to LH needle in turned position and knit them together through the back loops (1 st decreased).
- k2tog:** Knit 2 sts together (1 st decreased).
- m1p:** (make 1 purlwise) Insert LH needle under horizontal strand between st just worked and next st, from the back to the front, purl (1 st increased).

PATTERN STITCHES:

1 x 1 Rib: (multiple of 2 sts + 1)
 Row 1 (RS): K1, *p1, k1; rep from * across.
 Row 2: Knit the knit sts and purl the purl sts as they face you.
 Rep Row 2 for 1 x 1 Rib.

Star Mesh Rib: (multiple of 4 sts + 5)

(also, see chart)
 Row 1: (RS) K1 *yo, s2kp, yo, k1; rep from * across.
 Row 2: (WS) Purl.
 Row 3: Ssk, yo, k1 *yo, s2kp, yo, k1; rep from * to last 2 sts, yo, k2tog.
 Row 4: Rep Row 2.
 Rep Rows 1–4 for Star Mesh Rib.

I-Cord: *Knit 1 row; without turning the work, slide the sts to RH end of needle, pull yarn tightly from the end of the row, (behind the sts); rep from * until cord meas desired length.

BAG (make 2)

Using smaller needles, CO 89 sts. **(WS) Begin 1 x 1 Rib;** work even until piece meas 2" from beg, end RS row. **Change to larger needles;** **Dec Row:** (WS) P1, k1, p1 (edge sts, keep in 1 x 1 Rib throughout), place marker (pm), dec 14 sts evenly across center 83 sts as follows: p2, p2tog, *p4, p2tog; rep from * to last 4 sts, p1, pm, p1, k1, p1 (edge sts, keep in 1 x 1 Rib throughout)—75 sts rem. **Est Patt:** (RS) K1, p1, k1 (edge sts, keep in 1 x 1 Rib throughout), slip marker, work across center 69 sts in Star Mesh Rib, slip marker, k1, p1, k1 (edge sts, keep in 1 x 1 Rib throughout). Work even as est until piece meas 15" from beg, end RS row. **Inc Row:** (WS) P1, k1, p1 (edge sts), slip marker, p2, m1p, *p5, m1p; rep from * across to last 4 sts, p2, slip marker, p1, k1, p1 (edge sts)—89 sts. **Change to smaller needles and 1 x 1 Rib:** (RS) Work across, removing markers. Work even in 1 x 1 Rib for 2", end WS row. BO all sts in Rib.

HANDLES (make 2)

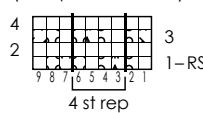
Using dpn, CO 7 sts. Work I-Cord until piece meas 25" from beg. BO all sts.

FINISHING

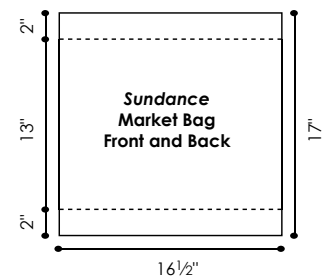
Block pieces to measurements. Sew side and bottom seams. Fasten one handle to each side of bag as follows: Sew each end of handles 3" in from side seam, and 2" down from top edge on WS into bag.



Star Mesh Rib Chart
(multiple of 4 sts + 5)



- Knit on RS, purl on WS
- Yarn over
- s2kp (see Special Terms)
- ssk (see Special Terms)
- k2tog (see Special Terms)



ABBREVIATIONS

- approx**—approximately
- beg**—begin(ning)
- BO**—bind off
- CO**—cast on
- dec**—decrease
- dpn**—double pointed needles
- est**—establish(ed)
- inc**—increase
- k**—knit

- k2tog**—see Special Terms
- LH**—left hand
- m1p**—see Special Terms
- meas**—measures
- p**—purl
- p2tog**—see Special Terms
- patt**—pattern
- pm**—place marker
- rem**—remain(ning)

- rep**—repeat
- RH**—right hand
- RS**—right side
- s2kp**—see Special Terms
- ssk**—see Special Terms
- st(s)**—stitch(es)
- WS**—wrong side
- yo**—yarn over