

Classic Elite Yarns

Sundance Make Up Bag



Designed by: Joëlle Meier Rioux

SIZES: One Size

Finished Measurements: 7" wide, 4½" tall.

MATERIALS:

Sundance by **Classic Elite** (50% cotton, 50% microfiber; 50 gram ball = approx 83 yards)

- 1 ball 6290 Clear Water

Needles

- One pair size US 7 (4.5 mm)

Or size to obtain gauge

- One set double pointed needles (dpn) size US 6 (4 mm)
- Stitch markers
- One ⅝" button

GAUGE: 19 sts = 4" in Stockinette Stitch with larger needles. **Take time to save time, check your gauge.**

SPECIAL TERMS:

m1-r: (make 1 right slanting) Insert LH needle under horizontal strand between st just worked and next st from the back to the front, knit through the front loop (1 st increased).

m1-l: (make 1 left slanting) Insert LH needle under horizontal strand between st just worked and next st from the front to the back, knit through the back loop (1 st increased).

yo: Yarn over (1 st increased).

ssk: (slip, slip, knit) Slip 2 sts, 1 at a time, knitwise to the RH needle; return sts to LH needle in turned position and knit them together through the back loops (1 st decreased).

k2tog: Knit 2 sts together (1 st decreased).

sk2p: Slip 1 st purlwise, from the LH needle to the RH needle, k2tog, pass slipped st over knit st created by k2tog (2 sts decreased).

ssk-r-pso: Ssk, return st to LH needle, pass next st on LH needle over returned st and off needle; slip returned st back to RH needle (2 sts decreased).

PATTERN STITCHES:

Garter Stitch (Gtr st): Knit every row.

Stockinette Stitch (St st): Knit on RS, purl on WS.

Knitted Cast On: *Insert RH needle knitwise into first st of LH needle, wrap the yarn around the needle and pull through as to make a knit st, leave the first st on LH needle and slip st just made to LH needle (1 st CO).



Flap Pattern: (25 st panel)

(also, see chart on page 2)

Row 1: K2, yo, k6, k2tog, k5, ssk, k6, yo, k2.

Row 2 and all WS rows: Purl.

Row 3: K3, yo, k5, k2tog, k5, ssk, k5, yo, k3.

Row 5: K4, yo, k4, k2tog, k5, ssk, k4, yo, k4.

Row 7: K5, yo, k3, k2tog, k5, ssk, k3, yo, k5.

Row 9: K6, yo, k2, k2tog, k5, ssk, k2, yo, k6.

Row 11: K7, yo, k1, k2tog, k5, ssk, k1, yo, k7.

Row 13: K8, yo, k2tog, k5, ssk, yo, k8.

Row 15: K7, yo, ssk-r-pso, yo, k5, yo, sk2p, yo, k7.

Row 16: Rep Row 2.

Work Rows 1–16 for Flap Patt.

ABBREVIATIONS

approx – approximately

beg – begin(ning)

BO – bind off

CO – cast on

dec – decrease

dpn – double pointed needles

EOR – every other row

est – establish(ed)

Gtr st – Garter Stitch

inc – increase

k – knit

k2tog – see Special Terms

LH – Left Hand

m1-l – see Special Terms

m1-r – see Special Terms

meas – measures

p – purl

patt – pattern

pc(s) – piece(s)

pm – place marker

rem – remain(ning)

rep – repeat

RH – Right Hand

RS – Right Side

sk2p – see Special Terms

ssk – see Special Terms

ssk-r-pso – see Special Terms

st(s) – stitch(es)

St st – Stockinette Stitch

WS – Wrong Side

wyib – with yarn in back

yo – see Special Terms

Seed Stitch: (multiple of 2 sts + 1)

Row 1: (RS) Slip 1 st knitwise wyib, *p1, k1; rep from * across.
 Row 2: Slip 1 st knitwise wyib, knit the purl sts and purl the knit sts as they face you to last st, k1.
 Rep Row 2 for Seed St.

I-Cord: CO 3 sts onto 1 dpn. *Knit 1 row; without turning the work, slide the sts to RH end of needle, pull yarn tightly from the end of the row, (behind the sts); rep from * until cord meas desired length.

NOTES:

- Slip the first st of every row knitwise wyib; knit the last st of every row.
- Work Decorative Gusset inc sts as follows:
 (RS) Work as est to first marker, slip marker, m1-r, work to next marker in St st, m1-l, slip marker, work to end as est.
- Work Decorative Gusset dec sts as follows:
 (RS) Work as est to first marker, slip marker, ssk, work to 2 sts before next marker in St st, k2tog, slip marker, work to end as est.

BAG

CO 31 sts. (WS) **Begin Gtr st:** work 3 rows, end WS row. **Buttonhole Row:** (RS) Slip 1 st knitwise wyib, k14, BO 1 st, k15. (WS) Slip 1 st knitwise wyib, k2, p to BO st, CO 1 st using knitted cast-on method, p to last 3 sts, k3. **Est Flap Patt:** (RS) Slip 1 st knitwise wyib, k2 (edge sts, keep in Gtr st as est throughout), work 25 sts in Flap Patt, k3 (edge sts, keep in Gtr st throughout). Work as est for 15 rows, end WS row. **Est Seed St:** (RS) Work 24 rows as est, end WS row. **Shape Decorative Gusset:** (RS) Work 15 sts as est, place marker (pm), [p1, k1, p1] in next st, pm, work to end — 33 sts. (WS) Work to first marker as est, slip marker, work in St st to next marker, slip marker, work to end as est. (RS) Work 2 rows as est, end WS row. Next Row: (RS) Inc 2 sts this row (see Note 2), then EOR 1 time — 37 sts. (WS) Work 5 rows as est, end WS row. (RS) Dec 2 sts this row (see Note 3), then EOR 1 time — 33 sts rem. (WS) Work 1 row even as est. Next Row: (RS) Work to first marker as est, remove marker, sk2p, remove marker, work to end — 31 sts rem. **Change to Seed St:** (WS) work 21 rows even. (RS) BO all sts in patt.

I-CORD

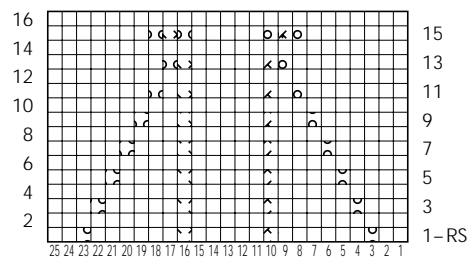
With 2 dpn, work I-Cord until pc meas 8" from beg.

FINISHING

Fold Bag at widest part of Decorative Gusset. Sew side seams. Loop I-Cord through the 2 center yo's at top of purse and tie it into knot on the inside of the flap. Sew button onto front of Bag opposite buttonhole. Block to measurements if desired.



Flap Chart
(panel of 25 sts; 16 rows)



- Knit on RS, purl on WS
- Yarn over
- k2tog (see Abbreviations)
- ssk (see Abbreviations)
- ssk-r-pso (see Abbreviations)
- sk2p (see Abbreviations)