

Classic Elite Yarns

Sundance Lunch Sack



Designed by: Cecily Glowik

SIZES: One Size

Finished Measurements: 7½" wide x 4" deep x 10½" tall

MATERIALS:

Sundance by **Classic Elite** (50% cotton, 50% microfiber; 50 gram ball = approx 83 yards)

- 4 balls Main Color (MC) — 6220 Celery Sprig
There will be enough left over from 4th ball to make a Sundance Leaf Sachet
- 1 ball Contrast Color (CC) — 6219 Angel Pink

Needles

- One pair size US 5 (3.75 mm)

Or size to obtain gauge

- Cable needle (cn)
- Two double pointed needles (dpn) size US 5 (3.75 mm)
- Tapestry needle

GAUGE: 20 sts and 30 rows = 4" in Slip Stitch Pattern. **Take time to save time, check your gauge.**

SPECIAL TERMS:

- p2tog:** Purl 2 sts together (1 st decreased).
- C3B:** Slip 2 sts to cn, hold in back; k1; k2 from cn.
- C3F:** Slip 1 st to cn, hold in front; k2; k1 from cn.

STITCH PATTERNS:

Slip Stitch Pattern: (multiple of 2 sts + 1)
 Row 1: (RS) K1, *slip 1 st purlwise wyif, k1; rep from* to end.
 Rows 2 and 4: Purl.
 Row 3: K2, *slip 1 st purlwise wyif, k1; rep from * to last st, k1.
 Rep Rows 1–4 for Slip Stitch Pattern.

Cable Pattern: (multiple of 14 sts + 8)

(also, see chart)
 Row 1 (RS): Knit.
 Row 2: Purl.
 Row 3: K8, *k2, slip 2 sts purlwise wyib, k10; rep from * across.
 Row 4: P8, *p2, slip 2 sts purlwise wyif, p10; rep from * across.
 Row 5: K8, *C3B, C3F, k8; rep from * to end.
 Row 6: Purl.
 Row 7: Knit.
 Row 8: Purl.
 Row 9: K3, slip 2 sts purlwise wyib, k3, *k9, slip 2 sts purlwise wyib, k3; rep from * across.
 Row 10: P3, slip 2 sts purlwise wyif, p3, *p9, slip 2 sts purlwise wyif, p3, rep from * across.
 Row 11: K1, C3B, C3F, k1, *k7, C3B, C3F, k1;



ABBREVIATIONS

approx – approximately	dpn – double pointed needle	rem – remain(ning)
beg – begin(ning)	k – knit	rep – repeat
BO – bind off	MC – Main Color	RH – Right Hand
C3B – see Special Terms	meas – measures	RS – Right Side
C3F – see Special Terms	p – purl	st(s) – stitch(es)
CC – Contrast Color	p2tog – see Special Terms	WS – Wrong side
cn – cable needle	patt – pattern	wyib – with yarn in back
CO – cast on	pc – piece	wyif – with yarn in front
dec – decrease		

rep from * across.
 Row 12: Purl.
 Rep Rows 1–12 for Cable Patt.

Gusset Panel (panel of 19 sts)

Row 1: (WS) P9, k1, p9.
 Row 2: Knit the knit sts and purl the purl sts as they face you.
 Rep Row 2 for Gusset Patt.

I-Cord: Using 2 dpn and 3 sts, *knit 1 row; without turning the work, slide the sts to RH end of needle, pull yarn tightly from the end of the row, (behind the sts); rep from * until cord meas desired length.

BACK

With MC, CO 37 sts. (RS) **Begin Slip Stitch Patt;** work even until piece meas 3" from beg, end RS row. **Dec Row:** (WS) P18, p2tog, purl to end—36 sts rem. **Change to Cable Patt;** (RS) work even until pc meas 10½" from beg, end WS row. (RS) BO all sts.

FRONT

Work as for Back.

SIDES (make 2)

With MC, CO 19 sts. (RS) **Begin Slip Stitch Patt;** work even until pc meas 3" from beg, end RS row. **Change to Gusset Patt;** (WS) work even until pc meas 10½" from beg, end WS row. (RS) BO all sts.

BOTTOM

With MC, CO 37 sts. (RS) **Begin Slip Stitch Patt;** work even until pc meas 4" from beg, end RS row. (WS) BO all sts.

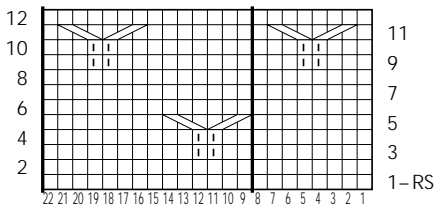
FINISHING

Block pieces to measurements. With CC and tapestry needle, make 5 French knots (see diagram) each above of the V's formed by the cabled sts as pictured. Sew CO edges of Front and Back pieces to long sides of Bottom. Sew CO edges of Sides to short sides of Bottom. Sew up 4 seams between the Sides and Front and Back. Fold sides in at line made by center purl sts, putting Front and Back corners together, sew corners together.
I-cord Ties: With CC and dpn, pick up and knit 3 sts 1½" down from top, centered on Front. Work I-cord for 8"; slip yarn through 3 sts to BO. Rep on Back for second tie.



Cable Chart

(multiple of 14 sts + 8; 12 row rep)



- Knit on RS, purl on WS
- Slip purlwise wyib on RS, wyif on WS
- Slip 2 sts to cn, hold in back; k1; k2 from cn
- Slip 1 st to cn, hold in front; k2; k1 from cn

French Knot

