

Classic Elite Yarns

Sundance Beach Bag

Sundance

50% cotton, 50% microfiber

Sundance is a machine washable blend of cotton and microfiber. Cotton is a wonderful natural fiber that is very soft and takes dye well. The microfiber eliminates some of the weight that could occur from 100% cotton yarns, and allows the bag to keep its shape. Sundance has a soft, smooth hand and a subtle sheen. It works up quickly without splitting and has great stitch definition. Did I mention that it's machine washable and the addition of microfiber helps it to dry faster than if it were just cotton?

Sundance Beach Bag Pattern

Designed by Tonia Barry

SIZE: One size

Finished Measurements: 16" wide by 17" tall; handles 24" long

MATERIALS:

Sundance by **Classic Elite** (50% cotton, 50% microfiber; 50 gram ball = approx 83 yards)

- 7 balls 6285 Oriental Poppy

Needles

- One 24" circular size US 9 (5.5 mm)

Or size to obtain gauge

- One pair size US 9 (5.5 mm)
- One 16" circular size US 4 (3.5 mm) for handles
- Cable needle (cn)
- Stitch holders
- Stitch markers

GAUGE: 15 sts and 32 rows = 4" in Garter Stitch with larger needle. **Take time to save time, check your gauge.**

SPECIAL TERMS:

yo: Yarn over (1 st increased).

k2tog: Knit 2 sts together (1 st decreased).

sk2p: Slip 1 st knitwise, from the LH needle to the RH needle, k2tog, pass slipped st over knit st created by k2tog (2 sts decreased).

p3tog: Purl 3 sts together (2 sts decreased).

MB (make bobble): (RS) [K1, yo, k1, yo, k1, yo, k1] into 1 st, turn; (WS) k7, turn; (RS) [sk2p] 2 times, k1, turn; (WS) p3tog, turn.

C10F: Slip 5 sts to cn, hold in front; k5; k5 from cn.

sl 1, k2, pss0: Slip 1 st purlwise, wyib, k2, pass the slipped st over the 2 knit sts.



ABBREVIATIONS

approx – approximately

beg – begin(ning)

BO – bind off

BOR – beginning of round

C10F – see Special Terms

cn – cable needle

CO – cast on

est – establish(ed)

Gtr st – Garter Stitch

k – knit

k2tog – see Special Terms

LH – left hand

MB – see Special Terms

meas – measures

p – purl

p3tog – see Special Terms

patt – pattern

pc – piece

pm – place marker(s)

rep – repeat

RH – right hand

rnd(s) – round(s)

RS – right side

sk2p – see Special Terms

sl 1, k2, pss0 – see Special Terms

st(s) – stitch(es)

WS – wrong side

wyib – with yarn in back

yo – see Special Terms

PATTERN STITCHES:

Provisional Cast-on Method: See tutorial on the Classic Elite website: <http://www.classiceliteyarns.com/WebLetter/Stitches/ProvCO/ProvCO.php>

Garter Stitch (Gtr St):

Circular—Rnd 1: Slip 1 st knitwise wyib, knit to end.

Rnd 2: Slip 1 st knitwise wyib, purl to end.

Rep Rows 1 and 2 for Gtr St.

Straight—Knit all sts, every row.

Cable Bobble Panel: (panel of 12 sts)

(also, see chart)

Rnds 1–4: P1, k10, p1.

Rnds 5 and 6: P1, k6, [MB] 2 times, k2, p1.

Rnds 7–9: Rep Rnd 1.

Rnd 10: P1, C10F, p1.

Rnds 11–12: Rep Rnd 1.

Rep Rnds 1–12 for Cable Bobble Panel.

Mesh Pattern: (multiple of 3 sts)

(also, see chart)

Note: When working rnd 2, work the 2 sts that are hugged together by the passed-over st each as individual sts.

Rnd 1: *Yo, sl 1, k2, pssso, rep from * to end.

Rnd 2: Knit.

Rep Rnds 1 and 2 For Mesh Patt.

Three Needle Bind Off Method: Slip the sts from holders onto each of 2 needles; with the RS of garment pcs together (to form ridge on inside of garment), hold the needles parallel. With a third needle knit the first st of front and back needles together, *knit next st from each needle together, (2 sts on RH needle), BO 1 st; rep from * until all sts are BO.

HANDLES (Make 2)

With smaller needles, use the Provisional Method to CO 9 sts. **Est Patt:** Slip 2 sts purlwise wyib, work to end in Gtr St. Work as est, slipping the first 2 sts of every row until pc meas 24" from beg. Slip sts onto a holder.

BAG

With larger circular needle, use the Provisional Method to CO 120 sts. Being careful not to twist sts, join to beg working in-the-rnd; place marker (pm) for beg-of-rnd (BOR).

Begin Gtr St: work even until pc meas 2" from beg, end after Rnd 1. **Est Patt:** *Work 12 sts in Cable Bobble Panel, pm for end of panel, work 48 sts in Mesh Patt, pm for side; rep from * 1 more time; in second rep, second side marker is BOR marker. Work even as est until pc meas 15" from beg, end after Rnd 1.

Change to Circular Gtr St: work even until pc meas 17" from beg. **Join handles to bag:** BO 25 sts knitwise, carefully remove waste yarn for Provisional CO from first handle and place sts on larger needle. Place handle in front of bag and use the Three Needle method to BO 9 sts from bag and handle, then BO 4 sts knit-

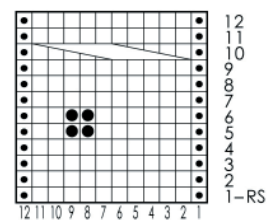


wise from bag, join second handle to bag as for the first, then BO 38 sts knitwise from bag. Remove st holder from second handle and place sts on larger needle. Place handle in front of bag and use the Three Needle method to BO 9 sts from bag and handle, BO 4 sts knitwise from bag. Remove st holder from first handle and place sts on larger needle, join first handle to bag as for the second, then BO 13 sts knitwise from bag.

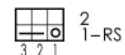
FINISHING

With WS facing, align cables and pin bottom of bag together. Remove yarn for Provisional CO from bottom of bag, slip 60 sts onto a straight needle then slip the other 60 sts onto second straight needle. Using larger circular needle and Three Needle BO Method, BO all sts. Weave in all ends.

Cable Bobble Chart
(panel of 12 sts; 12 rnd rep)



Mesh Chart
(multiple of 3 sts; 2 rnd rep)



- Knit
- Purl
- MB (see Special Terms)
- C10F (see Special Terms)
- yo (see Special Terms)
- sl 1, k2, pssso (see Special Terms)