

Classic Elite Yarns

Summer Set by the Sea

Michele's top is worked in the round from the bottom up. For the armhole, stitches are bound off, then the front and back are worked even separately for a little ways. They are rejoined by casting on stitches for the part of the yoke that flows over the shoulders.

There are a few different techniques for casting on at the beginning or end of the row. Michele's pattern uses the Cable Cast-on method. To see more detailed instructions on how to do this cast on method, visit our website:
<http://www.classicelityarns.com/WebLetter/Stitches/CO/COBegEnd.php>



Designed by: Michele Rose Orne

SIZES: Small (Medium, Large, Extra Large, 2X Large)

Finished Measurements: 34³/₄ (37¹/₄, 42³/₄, 45¹/₄, 48")

MATERIALS:

Summer Set by **Classic Elite** (64% cotton, 19% alpaca, 12% polyester, 5% lyocel; 50 gram ball = approx 95 yards)

- 6 (6, 7, 7, 8) balls Main Color (MC)—2180 Peridot
- 1 (1, 2, 2, 2) balls Color A—2178 Driftwood
- 1 ball Color B—2101 Picket Fence
- 1 ball Color C—2146 Awning

Needles

- One 32" circular each size US 6 and 7 (4 mm and 4.5 mm)

Or size to obtain gauge

- Four stitch markers (3 of one color, 1 of another for beg-of-rnd)
- Stitch holders

GAUGE: 18 sts and 28 rows = 4" gently stretched, with smaller needle; 22 sts and 24 rows = 4" in Color Pattern with larger needle.

Take time to save time, check your gauge.

SPECIAL TERMS:

skp: Slip 1 st knitwise, from the LH needle to the RH needle, k1, pass slipped st over knit st (1 st decreased).

k2tog: Knit 2 sts together (1 st decreased).

m1: (make 1) Insert LH needle under horizontal strand between st just worked and next st, from the front to the back, knit through the back loop (1 st increased).

PATTERN STITCHES:

2 x 1 Rib: (multiple of 3 sts)

Rnd 1: *K2, p1; rep from * around.

Rnd 2: Knit the knit sts and purl the purl sts as they face you.

Rep Rnd 2 for 2 x 1 Rib.

5 x 1 Rib:

Circular—(multiple of 6 sts)

Rnd 1: *K5, p1; rep from * around.

Rnd 2: Knit the knit sts and purl the purl sts as they face you.

Rep Rnd 2 for Circular 5 x 1 Rib.

Straight—(multiple of 6 sts + 5)

Row 1: (WS) P2, k1, *p5, k1; rep from * to last 2 sts, p2.

Row 2: Knit the knit sts and purl the purl sts as they face you.

Rep Row 2 for Straight 5 x 1 Rib.

Cable Cast-on Method: Insert RH needle between first 2 sts on LH needle, k1 from this position leaving existing sts on LH needle, slip new st onto LH needle. Rep from * for indicated number of sts.

Color Pattern: (multiple of 6 sts)

See chart on page 2; knit every rnd.

Decrease Color Pattern: (multiple of 12 sts)

See chart on page 2.

NOTES:

1. Work waist dec sts as follows: *Skp, work to 3 sts before marker, k2tog, p1, slip marker; rep from * 1 time.
2. Work waist inc sts as follows: *M1, work to 1 st before marker, m1, p1, slip marker; rep from * 1 time.
3. Work armhole dec sts as follows: (RS) K1, k2tog, work to last 3 sts, skp, k1.

BODY

With smaller needle and MC, CO 156 (168, 192, 204, 216) sts. Join to work in-the-rnd, being careful not to twist sts, place marker (pm) for beg-of-rnd (BOR). **Begin 2 x 1 Rib;** work 3 rnds. **Change to Circular 5 x 1 Rib;** work 78 (84, 96, 102, 108) sts, pm for side seam, work 78 (84, 96, 102, 108) sts. Work 1 rnd. **Shape Waist, dec:** Dec 4 sts this rnd (see Note 1), every 6th rnd 4 (4, 4, 0, 0) times, every 8th rnd 0 (0, 0, 3, 0) times, then every 12th rnd 0 (0, 0, 0, 2) times—136 (148, 172, 188, 204) sts rem. Work even until pc meas 7¹/₂" from beg. **Shape Waist, inc:** Inc 4 sts this rnd (see Note



ABBREVIATIONS

approx – approximately
beg – begin(ning)
BO – Bind Off
BOR – beginning of round
CO – Cast On
cont – continue
dec – decrease
est – establish(ed)
inc – increase
k – knit
k2tog – see Special Terms
LH – Left Hand
m1 – see Special Terms
MC – Main Color
meas – measures
p – purl
patt – pattern
pc – piece
pm – place marker
rem – remain(ning)
rep – repeat
RH – Right Hand
rnd(s) – round(s)
RS – Right Side
skp – see Special Terms
st(s) – stitch(es)
WS – Wrong Side

2), every 8th rnd 4 (4, 4, 0, 0) times, every 10th rnd 0 (0, 0, 2, 0) times, every 12th rnd 0 (0, 0, 1, 0) time, then every 16th rnd 0 (0, 0, 0, 2) times—156 (168, 192, 204, 216) sts. Work even until pc meas 15" from beg, end last rnd 4 sts before BOR. **Divide for Back and Front:** BO 7 sts, removing marker, work to 4 sts before side seam marker, slip 71 (77, 89, 95, 101) sts just worked to holder for Front, BO 7 sts, removing marker, work to end—71 (77, 89, 95, 101) sts rem for Back.

BACK

Begin working back and forth in rows on Back sts only in Straight 5 x 1 Rib. (WS) Work 1 row even. **Shape Armholes:** (RS) Dec 1 st each side this row (see Note 3), then EOR 2 times—65 (71, 83, 89, 95) sts rem. (WS) Work 3 rows even, end WS row. Slip sts to holder. Do not break yarn.

FRONT

Slip 71 (77, 89, 95, 101) Front sts from holder to working needle, preparing to work WS row. **Begin 5 x 1 Rib;** (WS) Join MC, work 1 row even. **Shape Armholes:** (RS) As for Back—65 (71, 83, 89, 95) sts rem. (WS) Work 3 rows even, end WS row. Leave sts on needle. Break yarn. Slip 65 (71, 83, 89, 95) Back sts from holder to working needle, preparing to work RS row.

YOKE

With MC already attached to Back, work 65 (71, 83, 89, 95) Back sts, pm, turn, (WS) using Cable Cast-on Method, CO 25 (25, 31, 37, 43) sts for left armhole, turn, (RS) pm, work 65 (71, 83, 89, 95) Front sts, pm, turn, (WS) using Cable Cast-on Method, CO 25 (25, 31, 37, 43) sts for right armhole, turn, (RS) pm of a different color for BOR, join to work in-the-rnd—180 (192, 228, 252, 276) sts. **Est Yoke Rib:** *Work to marker in Circular 5 x 1 Rib as est, slip marker, p1, work 24 sts in 2 x 1 Rib,

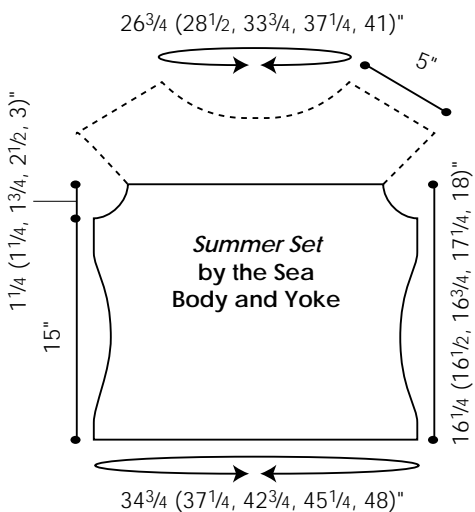


slip marker; rep from * 1 time for Front and right armhole. Work 3 (3, 6, 12, 15) rnds as est. **Change to larger needle and Color Patt;** work 25 rnds, end Rnd 25 of Color Patt. **Change to Dec Color Patt;** work for 3 rnds, end Rnd 3 of Dec Color Patt—165 (176, 209, 231, 253) sts

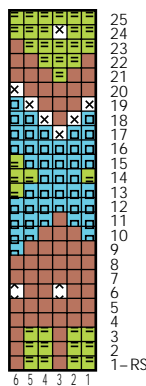
rem. **Change to smaller needle;** cont working Rnds 4–8 of Dec Color Patt—120 (128, 152, 168, 187) sts rem. BO all sts knitwise.

FINISHING

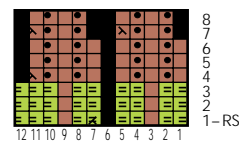
Lightly block pc to measurements.



Color Chart
(multiple of 6 sts; 25 rnds)



Decrease Color Chart
(multiple of 12 sts dec'd to 8 sts; 8 rnds)



On Rnd 7, ignore the No Stitch, and knit that st, at the end of the rnd, borrow the first st of the rnd to complete the last skp.

- With MC, knit
- With Color A, knit
- With Color B, knit
- With Color C, knit
- With MC, k2tog (see Special Terms)
- With Color A, skp (see Special Terms)
- With Color A, purl
- No Stitch