

Classic Elite Yarns

LUXURY FIBER DIVISION

Stormy Rectangle Scarf



Designed by: Heather Bagni

SIZE: One size

Finished Measurements: 7½" wide x 67" long

MATERIALS:

Stormy by **Classic Elite** (100% cashmere; 50 gram hank = approx 110 yards)

- 3 hanks

Needles

- One pair size US 8 (5 mm)

Or size to obtain gauge

GAUGE: 19 sts and 24 rows = 4" in Rectangle St. **Take time to save time, check your gauge.**

SPECIAL TERMS:

k2tog: Knit 2 sts together (1 st decreased).

m1: (make 1) Insert LH needle under horizontal strand between st just worked and next st, from the front to the back, knit through the back loop (1 st increased).

PATTERN STITCHES:

1 x 1 Rib: (multiple of 2 sts + 1)

Row 1: (WS) P1, *k1, p1; rep from * to end.

Row 2: Knit the knit sts and purl the purl sts as they face you.

Rep Row 2 for 1 x 1 Rib.

Rectangle Stitch: (multiple of 18 sts)

(also, see chart)

Rows 1 and 3: (RS) *P9, k2, [p1, k1] 3 times, k1; rep from * to end.

Row 2 and all WS rows: Knit the knit sts and purl the purl sts as they appear.

Rows 5 and 11: *K2, [p1, k1] 3 times, k1; rep from * to end.

Rows 7 and 9: *K2, [p1, k1] 3 times, k1, p9; rep from * to end.

Row 12: Rep Row 2.

Rep Rows 1–12 for Rectangle St.

SCARF

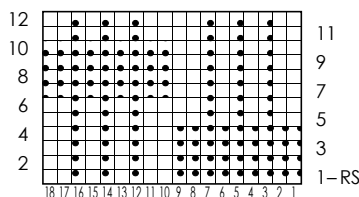
CO 37 sts. (WS) **Begin 1 x 1 Rib;** work even for 3 rows, end WS row. **Change to Rectangle St and Dec Row:** (RS) Work for 16 sts, k2tog, work to end—36 sts rem. Work even until piece meas approx 67" from beg, end WS Row 4 or 10 of Rectangle St. **Change to 1 x 1 Rib and Inc Row:** (RS) Beg k1, work across 18 sts, end p1, m1, work to end, beg p1, end k1—37 sts. Work 2 rows even, end RS row. (WS) BO all sts in Rib.

FINISHING

Block piece to measurements.



Rectangle Chart
(multiple of 18 sts; 12 row rep)



- Knit on RS, purl on WS
- Purl on RS, knit on WS

ABBREVIATIONS

- approx**—approximately
- beg**—begin(ning)
- BO**—bind off
- CO**—cast on
- dec**—decrease
- inc**—increase
- k**—knit
- k2tog**—See Special Terms
- LH**—left hand
- m1**—See Special Terms
- meas**—measures
- p**—purl
- rep**—repeat
- RS**—right side
- st(s)**—stitch(es)
- WS**—wrong side