

Classic Elite Yarns

Solstice Dias de Betty

Solstice

70% organic cotton, 30% merino wool

Solstice, a yarn in our eco-friendly Verde Collection, is a blend of organically-grown cotton and soft merino wool. Combining these two fibers allows Solstice to make use of the best qualities of each. The cotton component keeps the stitches crisp and clear, provides structure, and allows the finished garment to breath. Super soft merino wool adds warmth, drape and helps the knit piece to hold its shape.

Solstice Dias de Betty Pattern

Designed by: Stephanie Voyer

SIZES: Small (Medium, Large, Extra Large)
Finished Measurements: 34 (36½, 38¾, 41¼)"
To fit Bust Measurements: 36 (38½, 40¾, 43¼)"

MATERIALS:

Solstice by Classic Elite Verde collection
(70% organic cotton, 30% merino wool; 50 gram ball = approx 100 yards)

- 10 (11, 11, 12) balls 2335 Pampas

Needles:

- One pair size US 7 (4.5 mm)

Or size to obtain gauge.

- Stitch holder or waste yarn
- Stitch markers

GAUGE: 20 sts and 28 rows = 4" in Stockinette Stitch. **Take time to save time, check your gauge.**

SPECIAL TERMS

p1-f/b: Purl into the front loop, then the back loop of next st (1 st increased).

ssk: (slip, slip, knit) Slip 2 sts, 1 at a time, knitwise to the RH needle; return sts to LH needle in turned position and knit them together through the back loops (1 st decreased).

ssp: (slip, slip, purl) Slip 2 sts, 1 at a time, knitwise to the RH needle; return sts to LH needle in turned position and purl them together through the back loops (1 st decreased).

k2tog: Knit 2 sts together (1 st decreased).

p2tog: Purl 2 sts together (1 st decreased).

yo: Yarn over (1 st increased).

k3tog: Knit 3 sts together (2 sts decreased).

sssk: (slip, slip, slip, knit) Slip 3 sts, 1 at a time, knitwise to the RH needle; return sts to LH needle in turned position and knit them together through the back loops (2 sts decreased).

m1-r: (make 1 right slanting) Insert LH needle under horizontal strand between st just worked and next st from the back to the front, knit through the front loop (1 st increased).

m1-l: (make 1 left slanting) Insert LH needle under horizontal strand between st just worked and next st from the front to the back, knit through the back loop (1 st increased).

PATTERN STITCHES:

Stockinette Stitch (St st): Knit on RS, purl on WS.

2 x 2 Rib: (multiple of 4 sts + 2)

Row 1: (RS) K2, *p2, k2; rep from * to end.

Row 2: Knit the knit sts and purl the purl sts as they face you.

Rep Row 2 for 2 x 2 Rib.

Chart A: See chart.

Work Rows 1–6 once, then rep Rows 7–30.

Chart B: (panel of 15 sts)

See chart. Work Rows 1–6 once, then rep Rows 7–30.

Chart C: See chart.

Work Rows 1–6 once, then rep Rows 7–30.

3 x 3 Rib: (multiple of 6 sts + 3)

Row 1: (RS) K3, *p3, k3; rep from * to end.

Row 2: Knit the knit sts and purl the purl sts as they face you.

Rep Row 2 for 3 x 3 Rib.

Left Front Decrease Panel 1: (panel of 5 sts)

(also, see chart)

Row 1: (RS) K3tog, yo, k2—1 st dec'd.

Row 2: K2, p to end.

Row 3: K2tog, k3—1 st dec'd.

Row 4: Rep Row 2.

Rep Rows 1–4 for Left Front Dec Panel 1.

Left Front Decrease Panel 2: (panel of 5 sts)

(also, see chart)

Row 1: (RS) K3tog, yo, k2—1 st dec'd.

Row 2: K2, p to end.

Row 3: Knit.

Row 4: Rep Row 2.

Rep Rows 1–4 for Left Front Dec Panel 2.

Left Front Edge Panel: (panel of 5 sts)

(also, see chart)

Row 1: (RS) K1, k2tog, yo, k2.

Row 2: K2, p3.

Row 3: Knit.

Row 4: Rep Row 2.

Rep Rows 1–4 for Left Front Edge Panel.



ABBREVIATIONS

approx – approximately

beg – begin(ning)

BO – bind/bound off

CO – cast on

cont – continue

dec('d) – decrease(d)

EOR – every other row

est – establish(ed)

inc('d) – increase(d)

k – knit

k2tog – see Special Terms

k3tog – see Special Terms

LH – left hand

m1-l – see Special Terms

m1-r – see Special Terms

meas – measures

p – purl

p1-f/b – see Special Terms

p2tog – see Special Terms

patr – pattern

pc(s) – piece(s)

pm – place marker

rem – remain(ning)

rep(s) – repeat(s)

RH – right hand

RS – right side

ssk – see Special Terms

sssk – see Special Terms

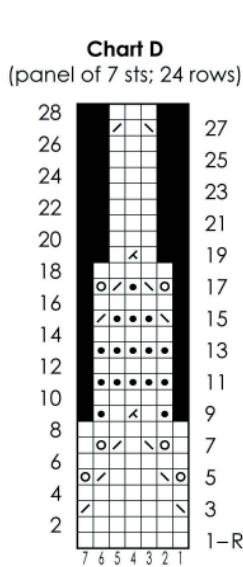
ssp – see Special Terms

st(s) – stitch(es)

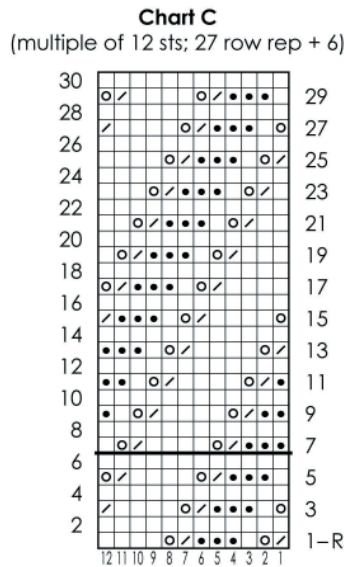
St st – Stockinette Stitch

WS – wrong side

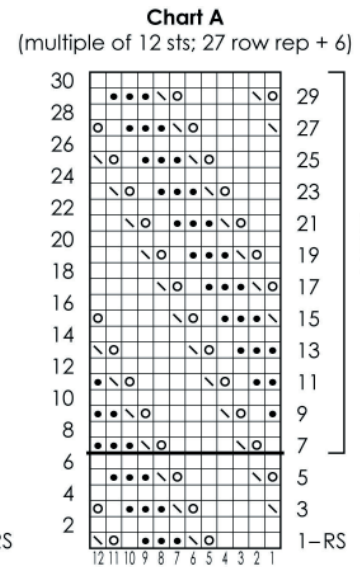
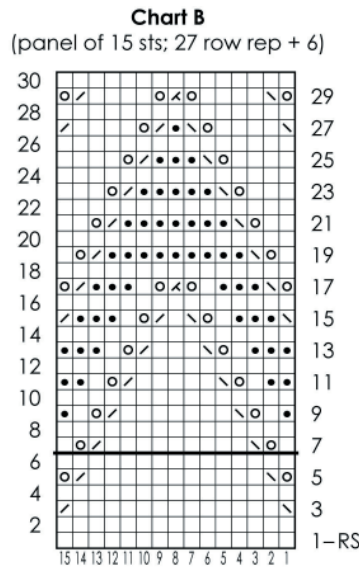
yo – see Special Terms



- Knit on RS, purl on WS
- Purl on RS, knit on WS
- yo (see Special Terms)
- ⊞ ssk (see Special Terms)
- ⊚ k2tog (see Special Terms)
- ⊛ k3tog (see Special Terms)
- no stitch



- End Sleeve Size M
- End Back Size M
- End Sleeve Size L
- End Back Size L
- End Sleeve Size S
- Beg Back & Sleeve All Sizes
- End Back Sizes S (XL)
- End Sleeve Size L



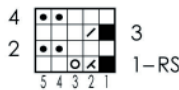
- Beg Back Sizes S (XL)
- End Back & Sleeve All Sizes
- Beg Sleeve Size L
- Beg Back Size L
- Beg Sleeve Size S
- Beg Back Size M
- Beg Sleeve Size M
- Beg Sleeve Size L

Rep Rows 7-30

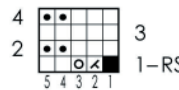
Right Front Decrease Panel 1: (panel of 5 sts)
(also, see chart)

Row 1: (RS) K2, yo, sssk—1 st dec'd.
Row 2: P3, k2.
Row 3: K3, ssk—1 st dec'd.
Row 4: Rep Row 2.
Rep Rows 1-4 for Right Front Dec Panel 1.

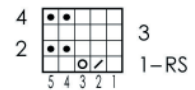
Left Front Decrease 1 Chart
(panel of 5 sts; 4 row rep)



Left Front Decrease 2 Chart
(panel of 5 sts; 4 row rep)



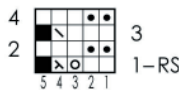
Left Front Edge Chart
(panel of 5 sts; 4 row rep)



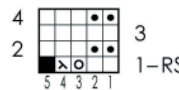
Right Front Decrease Panel 2: (panel of 5 sts)
(also, see chart)

Row 1: (RS) K2, yo, sssk—1 st dec'd.
Row 2: P3, k2.
Row 3: Knit.
Row 4: Rep Row 2.
Rep Rows 1-4 for Right Front Dec Panel 1.

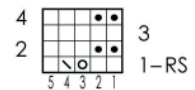
Right Front Decrease 1 Chart
(panel of 5 sts; 4 row rep)



Right Front Decrease 2 Chart
(panel of 5 sts; 4 row rep)



Right Front Edge Chart
(panel of 5 sts; 4 row rep)



Right Front Edge Panel: (panel of 5 sts)
(also, see chart)

Row 1: (RS) K2, yo, ssk, k1.
Row 2: P3, k2.
Row 3: Knit.
Row 4: Rep Row 2.
Rep Rows 1-4 for Right Front Edge Panel.

Chart D: (panel of 7 sts dec'd to 3 sts)
See Chart.

NOTE: When working Charts A and C, beg and end where indicated on chart for your size, however if the first and/or last st of the row is an inc or dec st that does not have a corresponding dec or inc st, work that st in St st instead.

BACK

CO 90 (98, 106, 114) sts. **(RS) Begin 2 x 2 Rib:** work even for 6 rows, end after a RS row. **Inc Row:** (WS) P1-f/b, work to end as est—91 (99, 107, 115) sts. **Est Patt:** (RS) K1 (edge st, keep in St st throughout), beg and end where indicated for your size, work 37 (41, 45, 49) sts in Chart A, work 15 sts in Chart B, then beg and end where indicated for your size, work 37 (41, 45, 49) sts in Chart C, k1 (edge st, keep in St st throughout). Cont as est until pc meas 2" from beg, end after WS row. **Shape Waist, Dec Row:** (RS) K1 (edge st), ssk or ssp keeping in patt, work to last 3 sts as est, k2tog or p2tog keeping in patt, k1 (edge st)—2 sts dec'd. Rep waist dec row every 8th row 7 (8, 5, 4) more times, then every 6th row 0 (0, 4, 6) times—75 (81, 87, 93) sts rem. Work even until pc meas approx 13" from beg, end after WS row 18 of Charts. **Change to 3 x 3 Rib;**

(RS) work 6 rows even, end after a WS row. **Change to St st;** (RS) work 4 rows even, end after a WS row. **Shape Waist, Inc Row:** (RS) K1, m1-r, work to last st, m1-l, k1—2 sts inc'd. Rep waist inc row every 4th row 4 more times—85 (91, 97, 103) sts. Work even until pc meas 17½ (17½, 17¾, 18)" from beg, end after a WS row. **Shape Armholes:** (RS) BO 5 (5, 6, 6) sts at beg of next 2 rows—75 (81, 85, 91) sts rem. **Dec Row:** K1, ssk, work to last 3 sts, k2tog, k1—2 sts dec'd. Rep armhole dec row EOR 3 (4, 5, 6) more times—67 (71, 73, 77) sts rem. Work even until armholes meas 7 (7½, 8, 8½)" from beg, end after a WS row. Place markers (pm) each side of center 23 sts. **Shape Neck:** (RS) Work to first marker, remove marker, join second ball of yarn, BO center sts, remove second marker and work to end—22 (24, 25, 27) sts rem each side. Working both sides at the same time, with separate balls of yarn,

BO 5 sts at each neck edge 2 times; **and at the same time**, on first row of neck shaping, **Shape Shoulders:** (RS) BO 4 sts at each armhole edge 3 (1, 0, 0) times, 5 sts 0 (2, 3, 1) times, then 6 sts 0 (0, 0, 2) times.

FRONT

Work as for back until pc meas approx 13" from beg, end after WS Row 18 of Charts. **Change to 3 x 3 Rib;** (RS) work 6 rows even, end after a WS row.

LEFT FRONT

Set-Up Rows: (RS) Work 41 (44, 47, 50) sts in St st, work Left Front Dec Panel 1 over next 5 sts; slip rem 29 (32, 35, 38) sts to st holder or waste yarn for left front—45 (48, 51, 54) sts rem. (WS) K2, purl to end. (**Note:** Read the following carefully before beg, the neck shaping is worked at the same time as the waist inc's and armhole shaping.) **Est Patt and Shape Neck:** (RS) Work to last 5 sts in St st, work Left Front Dec Panel 1 to end—1 st dec'd EOR. Work as est until 12 (11, 10, 9) whole reps of Left Front Dec Panel 1 have been worked, then change the Left Front Dec Panel 1 sts to Left Front Dec Panel 2 (1 st dec'd every 4th row) and work until 6 (8, 10, 12) reps of Left Front Dec Panel 2 have been worked. When neck shaping is finished, change Left Front Dec Panel 2 sts to Left Front Edge Panel, and work neck edge even to end; **and at the same time**, on the second instance of Row 1 of the Left Front Dec Panel 1, **Shape Waist, Inc Row:** (RS) K1, m1-r, work to end as est—1 st inc'd. Rep waist inc row every 4th row 4 more times. Work until pc meas 17½ (17½, 17¾, 18)" from beg, end after a WS row. **Shape Armhole:** Cont working neck shaping as est, work armhole shaping as for back, at beg of row only. Work until armhole meas 7 (7½, 8, 8½)" from beg of armhole shaping, end after a WS row—12 (14, 15, 17) sts rem after all shaping. **Shape Shoulder:** (RS) As for back.

RIGHT FRONT

Slip 29 (32, 35, 38) sts from holder to working needle, preparing to work a RS row. With WS facing, using needle with sts already on it, pick up and knit 17 sts from behind the right front—46 (49, 52, 55) sts. **Est Patt and Shape Neck, Dec Row:** (RS) Work 5 sts in Right Front Dec Panel 1, work to end in St st—1 st dec'd. Work as est until 12 (11, 10, 9) whole reps of Right Front Dec Panel 1 have been worked (1 st dec'd EOR), then change the Right Front Dec Panel 1 sts to Right Front Dec Panel 2 (1 st dec'd every 4th row) and work until 6 (8,

10, 12) reps of Right Front Dec Panel 2 have been worked. When neck shaping is finished, change Right Front Dec Panel 2 sts to Right Front Edge Panel, and work neck edge even to end; **and at the same time**, on the second instance of Row 1 of the Right Front Dec Panel 1, **Shape Waist, Inc Row:** (RS) Work to last st as est, m1-l, k1—1 st inc'd. Rep waist inc row every 4th row 4 more times. Work until pc meas 17½ (17½, 17¾, 18)" from beg, end after a RS row. **Shape Armhole:** (WS) Cont working neck shaping as est, work armhole shaping as for back, binding off on this WS row, then working dec's at end of RS rows only. Work until pc meas 7 (7½, 8, 8½)" from beg of armhole shaping, end after a RS row—12 (14, 15, 17) sts rem after all shaping. **Shape Shoulder:** (WS) As for back.

SLEEVES

CO 50 (54, 58, 62) sts. (RS) **Begin 2 x 2 Rib;** work 6 rows even, end after a WS row. **Inc Row:** P1-f/b, work to end as est—51 (55, 59, 63) sts. **Est Patt:** (RS) K1 (edge st, keep in St st throughout), beg and end where indicated for your size, work 21 (23, 25, 27) sts in Chart A, work 7 sts in Chart D, then beg and end where indicated for your size, work 21 (23, 25, 27) sts in Chart C, k1 (edge st, keep in St st throughout). Work 27 more rows as est, ending after Row 28 of Charts—47 (51, 55, 59) sts rem. **Dec Row:** (RS) P22 (24, 26, 28) sts, p3tog, purl to end—45 (49, 53, 57) sts rem. **Change to St st;** (WS) work 7 rows even, end after a WS row. **Shape Sleeve, Inc Row:** (RS) K1, m1-r, work to last st, m1-l, k1—2 sts inc'd. Rep sleeve inc row every 6th row 4 (2, 0, 0) more times, then every 4th row 2 (5, 8, 9) times—59 (65, 71, 77) sts. Work even until pc meas 11½ (11½, 11½, 12)" from beg, end after a WS row. **Shape Cap:** (RS) BO 5 (5, 6, 6) sts at beg of next 2 rows—49 (55, 59, 65) sts rem. **Dec Row:** (RS) K1, ssk, work to last 3 sts, k2tog, k1—2 sts dec'd. Rep cap dec row EOR 16 (18, 20, 21) more times—15 (17, 17, 21) sts rem. BO 2 (2, 2, 3) sts at beg of next 4 rows—7 (9, 9, 9) sts rem. BO rem sts.

FINISHING

Block pcs to measurements. Set in sleeves; sew sleeve and side seams. **Back Neck Trim:** With RS facing, pick-up and knit 42 sts evenly across back neck edge. (WS) **Begin 2 x 2 Rib;** work 3 rows even, ending after a WS row. **Turning Row:** (RS) Knit. **Change to 2 x 2 Rib:** (WS) Work 3 rows even, ending after a WS row. (RS) BO all sts in rib. Fold and sew BO edge to pick-up row.

