

Classic Elite Yarns

Soft Linen Shawl

Soft Linen

35% linen, 35% wool, 30% baby alpaca

Soft Linen is very versatile yarn. When knit at a smaller gauge the fabric is smooth and soft and holds its shape beautifully. When knit at a larger gauge the fabric gains even more drape while keeping its shape. The alpaca component fills in the stitches keeping them from appearing too loose while the linen and wool keep the stitches straight and even. The 15 available colors of Soft Linen are earthy and sophisticated.

Soft Linen Shawl Pattern

Designed by: Cecily Glowik MacDonald

SIZE: One size

Finished Measurements: 42½" along top edge and 21¼" at center point

MATERIALS:

Soft Linen by **Classic Elite** (35% linen, 35% wool, 30% baby alpaca; 50 gram ball = approx 137 yards)

- 3 balls 2225 Smokey Rose

Needles:

- One pair each size US 9, 10, and 10½ (5.5, 6 and 6.5 mm)

Or size to obtain gauge

- Stitch markers

GAUGE: 17 sts and 21 rows = 4" in Stockinette Stitch with smallest needles. **Take time to save time, check your gauge.**

SPECIAL TERMS:

k1-f/b: Knit into the front loop, then the back loop of next st (1 st increased).

k1-b/r: Slightly twist work on LH needle towards you so that WS of work is visible. Insert RH needle from top down into next st on LH needle 1 row below; knit this st (1 st increased).

ssk: (slip, slip, knit) Slip 2 sts, 1 at a time, knitwise to the RH needle; return sts to LH needle in turned position and knit them together through the back loops (1 st decreased).

k2tog: Knit 2 sts together (1 st decreased).

yo: Yarn over needle (1 st increased).

PATTERN STITCHES:

Stockinette Stitch (St st): Knit on RS, purl on WS.

Lace Pattern: (multiple of 6 sts + 9)

(also, see chart)

Row 1 and all WS rows: Purl.

Row 2: (RS) K1, *ssk, k2, yo, k2; rep from * to last 2 sts, k2.

Rows 4 and 6: Rep Row 2.

Row 8: K2, *k2, yo, k2, k2tog; rep from * to last st, k1.

Row 10: Rep Row 8.

Row 12: Rep Row 10.

Work Rows 1–12 for Lace Patt.

SHAWL

With smallest needles, CO 7 sts. **(WS) Begin St st;** work 1 row. **Shape Shawl: Inc Set-up Row:** K1-f/b, k1, k1-b/r, k1, place marker (pm), k1, pm, k1-f/b, k1, k1-f/b—11 sts. (WS) Work 1 row. **Inc Row 1:** (RS) K1-f/b, knit to 1 st before marker, k1-b/r, k1, slip marker, k1, slip marker, k1-f/b, knit to last st, k1-f/b—4 sts inc'd. Rep shawl inc row 1 EOR 46 more times—199 sts. (WS) Work 1 row even removing markers. **Inc Row 2:** (RS) K1-f/b, k95, [k1-f/b] 6 times, knit to last st, k1-f/b—207 sts. **Change to Lace Patt;** (WS) work 6 rows even, end after a RS row. **Change to middle size needles;** work 6 more rows even, end after a RS row. **Change to largest needles;** BO all sts loosely purlwise.

FINISHING

Block pc to measurements.



ABBREVIATIONS

approx – approximately

BO – bind off

CO – cast on

EOR – every other row

inc('d) – increase(d)

k – knit

k1-r/r – see Special Terms

k1-f/b – see Special Terms

k2tog – see Special Terms

LH – left hand

Patt – pattern

pc – piece

pm – place marker

rep – repeat

RH – right hand

RS – right side

ssk – see Special Terms

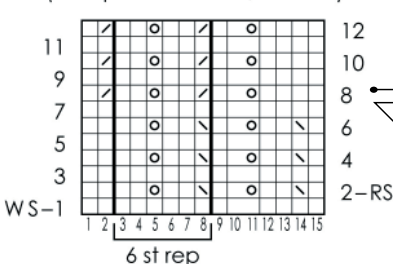
st(s) – stitch(es)

St st – Stockinette Stitch

WS – wrong side

yo – see Special Terms

Lace Chart
(multiple of 6 sts + 9; 12 rows)



- knit on RS, purl on WS
- yo (see Special Terms)
- ssk (see Special Terms)
- k2tog (see Special Terms)

