

Classic Elite Yarns

Soft Linen Minnie's Cover Up

Soft Linen

35% linen, 35% wool, 30% baby alpaca

Soft Linen is composed of an interesting blend of fibers: Cool, crisp linen, soft, warm alpaca, and elastic wool. Together they make a soft yarn that's comfortable to wear all year round. Garments knitted in Soft Linen have a nice drape while providing just the right amount of warmth. When knit in an airy lace pattern Soft Linen is great for transitional garments like Grace's top. Wear it over a tank in warm weather or over long sleeves when the weather gets cooler.

Soft Linen Pineapple Lace Vest Pattern

Designed by: Grace Mcewen

SIZES: Small (Medium, Large, Extra Large)

Finished measurements: 44³/₄ (48¹/₂, 57¹/₂, 66¹/₄)"

MATERIALS:

Soft Linen by *Classic Elite* (35% linen, 35% wool, 30% baby alpaca; 50 gram ball = approx 137 yards)

- 6 (8, 10, 13) balls 2225 Smoky Rose

Needles:

- One pair size US 8 (5 mm)

Or size to obtain gauge

- Hook and eye closure
- Eight yards ³/₈" ribbon

Gauge: 18 sts and 20 rows = 4" meas along Row 1 of Pineapple Lace Pattern. **Take time to save time, check your gauge.**

SPECIAL TERMS:

m8: (make 8) [K1, p1] 4 times, then k1, all in the next st.

ssk: (slip, slip, knit) Slip 2 sts, 1 at a time, knitwise to the RH needle; return sts to LH needle in turned position and knit them together through the back loops (1 st decreased).

k2tog: Knit 2 sts together (1 st decreased).

sk2p: Slip 1 st knitwise, from the LH needle to the RH needle, k2tog, pass slipped st over knit st created by k2tog (2 sts decreased).

yo: Yarn over (1 st increased).

PATTERN STITCHES:

Pineapple Lace Pattern: (multiple of 10 sts + 3; st count changes on each row)

Row 1: (RS) P1, m8, *p1, k1, ssk, yo, k1, yo, k2tog, k1, p1, m8, p1; rep from * to end—multiple of 18 sts + 11.

Row 2: K1, p9, k1, *p7, k1, p9, k1; rep from * to end.

Row 3: P1, [ssk, yo] 2 times, k1, [yo, k2tog] 2 times, p1, *ssk, yo, sk2p, yo, k2tog, p1, [ssk, yo] 2 times, k1, [yo, k2tog] 2 times, p1; rep from * to end—multiple of 16 sts + 11.

Row 4: K1, p9, k1, *p5, k1, p9, k1; rep from * to end.

Row 5: P1, [ssk, yo] 2 times, k1, [yo, k2tog] 2 times, p1, *ssk, k1, k2tog, p1, [ssk, yo] 2 times, k1, [yo, k2tog] 2 times, p1; rep from * to end—multiple of 14 sts + 11.

Row 6: K1, p9, k1, *p3, k1, p9, k1; rep from * to end.

Row 7: P1, [ssk, yo] 2 times, k1, [yo, k2tog] 2 times, p1, *sk2p, p1, [ssk, yo] 2 times, k1, [yo, k2tog] 2 times, p1; rep from * to end—multiple of 12 sts + 11.

Row 8: K1, p9, k1, *p1, k1, p9, k1; rep from * to end.

Row 9: P1, [ssk] 2 times, yo, k1, yo, [k2tog] 2 times, p1, *k1, p1, [ssk] 2 times, yo, k1, yo, [k2tog] 2 times, p1; rep from * to end—multiple of 10 sts + 9.

Row 10: K1, p7, k1, *p1, k1, p7, k1; rep from * to end.

Row 11: P1, k1, ssk, yo, k1, yo, k2tog, k1, p1, *m8, p1, k1, ssk, yo, k1, yo, k2tog, k1, p1; rep from * to end—multiple of 18 sts + 9.

Row 12: K1, p7, k1, *p9, k1, p7, k1; rep from * to end.

Row 13: P1, ssk, yo, sk2p, yo, k2tog, p1, *[ssk, yo] 2 times, k1, [yo, k2tog] 2 times, p1, ssk, yo, sk2p, yo, k2tog, p1; rep from * to end—multiple of 16 sts + 7.

Row 14: K1, p5, k1, *p9, k1, p5, k1; rep from * to end.

Row 15: P1, ssk, k1, k2tog, p1, *[ssk, yo] 2 times, k1, [yo, k2tog] 2 times, p1, ssk, k1, k2tog, p1; rep from * to end—multiple of 14 sts + 5.

Row 16: K1, p3, k1, *p9, k1, p3, k1; rep from * to end.

Row 17: P1, sk2p, p1, *[ssk, yo] 2 times, k1, [yo, k2tog] 2 times, p1, sk2p, p1; rep from * to end—multiple of 12 sts + 3.

Row 18: K1, p1, k1, *p9, k1, p1, k1; rep from * to end.

Row 19: P1, k1, p1, *[ssk] 2 times, yo, k1, yo, [k2tog] 2 times, p1, k1, p1; rep from * to end—multiple of 10 sts + 3.

Row 20: K1, p1, k1, *p7, k1, p1, k1; rep from * to end.

Rep Rows 1–20 for Pineapple Lace Patt.



ABBREVIATIONS

approx – approximately
beg – begin(ning)
BO – bind off
CO – cast on
k – knit
k2tog – see Special Terms
LH – left hand
m8 – see Special Terms
meas – measures
p – purl
patt – pattern
pc – piece
rep – repeat
RH – right hand
RS – right side
sk2p – see Special Terms
ssk – see Special Terms
st(s) – stitch(es)
WS – wrong side
yo – see Special Terms

page 1 of 2

© 2009 *Classic Elite Yarns* • Lowell, MA 01851 • All rights reserved.

This pattern is specifically for private use only. All commercial uses involving reproduction of this pattern or duplication of this garment are prohibited unless specifically licensed in writing by copyright owner.

View more information about this design on our website: www.classiceliteyarns.com/WebLetter/97/Issue97.php

BACK

CO 93 (113, 133, 153) sts. (WS) Knit 1 row. (RS) **Begin Pineapple Lace Patt**; work even until pc meas approx 25 (28½, 32, 35½)" from beg, end after RS Row 19. (WS) BO all sts in patt.

LEFT FRONT

CO 43 (53, 63, 73) sts. (WS) Knit 1 row. (RS) **Begin Pineapple Lace Patt**; work even until pc meas approx 25 (28½, 32, 35½)" from beg, end after RS Row 19. (WS) BO all sts in patt.

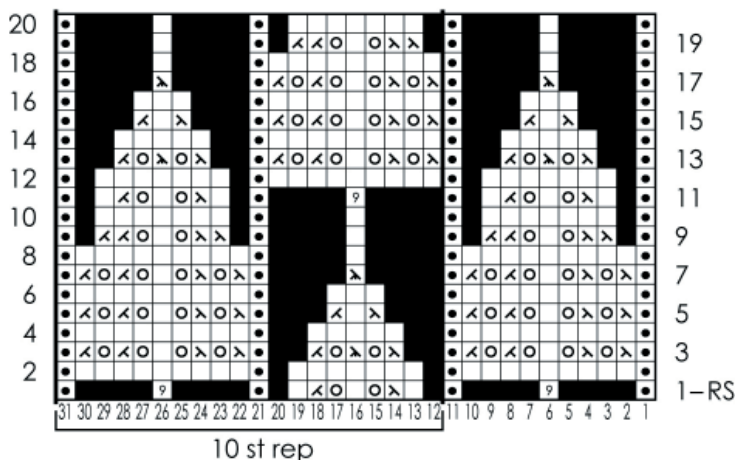
RIGHT FRONT

Work as for left front.

FINISHING

Block pc to measurements. Sew shoulder seams. The middle of the back (1 lace section) will be open to allow for the back of the neck. Try top on and count down the number of lace reps to just under your bust. At approx the third lace section, sew the 2 lace sections (1 from back and 1 from front) together to create armhole, overlapping the front over the back. Leave rest of side open. Rep this on the other side of garment for second armhole. Try on top again and mark where you would like the front to close. Sew hook and eye in place where marked. Weave ribbon in and out horizontally along lace patt to line up with the hook and eye. You may need to pin along the top to make sure you are weaving a fairly straight line. If necessary, trim extra ribbon leaving a tail to allow you to tie in a bow.

Pineapple Lace Chart
(multiple of 10 sts + 3; 20 row rep)



- Knit on RS, purl on WS
- Purl on RS, knit on WS
- m8 (see Special Terms)
- ssk (see Special Terms)
- k2tog (see Special Terms)
- yo (see Special Terms)
- s2kp (see Special Terms)

