

Classic Elite Yarns

Soft Linen Neck Warmer

Designed by: Nichole Reese

Soft Linen

35% linen, 35% wool, 30% baby alpaca

Soft Linen, a smooth DK weight yarn in a blend of linen, wool and alpaca, is the perfect year round yarn. It works equally well for lace, colorwork or textures. Both soft and sturdy, pieces worked in Soft Linen will hold their shape, while remaining soft to the touch. Available in a palette of 19 sophisticated colors.

SIZE: One size.

Finished Measurements: 4½" wide and 24" long

MATERIALS:

Soft Linen by **Classic Elite** (35% linen, 35% wool, 30% baby alpaca; 50 gram ball = approx 137 yards)

- 1 ball 2289 Boticelli Pink

Needles:

- One pair each size US 6 and 3 (4 and 3.25 mm)

Or size to obtain gauge.

- Shawl pin

GAUGE: 21 sts = 4" in Double Seed Stitch with smaller needles; 15 sts = 4" in Openwork Stitch with larger needles. **Take time to save time, check your gauge.**

SPECIAL TERMS:

p2tog: Purl 2 sts together (1 st decreased).

k2tog: Knit 2 sts together (1 st decreased).

k1-f/b: Knit into the front loop, then the back loop of next st (1 st increased).

p1-f/b: Purl into the front loop, then the back loop of next st (1 st increased).

yo: Yarn over (1 st increased).

PATTERN STITCHES:

Double Seed Stitch: (multiple of 4 sts)

(also, see chart)

Row 1: (RS) K3, *p2, k2; rep from * to last st, k1.

Row 2: K1, p2, *k2, p2; rep from * to last st, k1.

Row 3: Rep row 2.

Row 4: Rep row 1.

Rep rows 1–4 for Dbl Seed St.

Openwork Stitch: (multiple of 2 sts)

Row 1: K1, *yo, p2tog; rep from * to last st, k1.

Rep row 1 for Openwork St.

NECK WARMER

With smaller needle, CO 24 sts. **** (RS) Begin Dbl Seed St:** work even for approx 6", ending after RS row 1. **Change to larger needle and Dec Row:** (WS) K1, p2tog, k1, k2tog, *p1, p2tog, k1, k2tog; rep from * across—16 sts

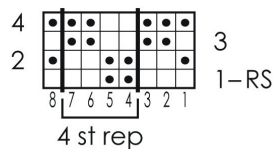


rem. **Change to Openwork St;** (RS) work even for 6", ending after a RS row. **** Change to smaller needle and Inc Row:** (WS) K1, *p1-f/b, p1; rep from * to last st, k1-f/b—24 sts. Rep between **'s once more ending after a RS row. (WS) BO all sts loosely.

FINISHING

Block piece to measurements.

Double Seed Chart
(multiple of 4 sts; 4 row rep)



knit on RS, purl on WS

purl on RS, knit on WS

ABBREVIATIONS

approx: approximately

BO: bind off

CO: cast on

dec: decrease

inc: increase

k: knit

k1-f/b: see Special Terms

k2tog: see Special Terms

rem: remain

rep: repeat

RS: right side

p: purl

p1-f/b: see Special Terms

p2tog: see Special Terms

st(s): stitch(es)

WS: wrong side

yo: see Special Terms