

# Classic Elite Yarns

## Soft Linen Lace Beret

Designed by: Meg Myers

### Soft Linen

35% linen, 35% wool, 30% baby alpaca

Soft Linen is a blend of alpaca, wool and linen that combine to make a yarn, which is both soft and sturdy. Soft Linen is a smooth DK weight yarn that lends itself well to knitted lace. Pieces worked in Soft Linen will hold their shape, while remaining soft to the touch. This makes it a particularly good choice for accessories that will get a lot of use, like hats, belts, shawls, scarves and mitts. Soft Linen is available in a palette of 19 refined, yet robust colors.

**SIZE:** One size; to fit an average adult head  
**Finished Measurements:** 23" circumference at base, stretched

### MATERIALS

**Soft Linen** by Classic Elite (35% linen, 35% wool, 30% baby alpaca; 50 gram ball = approx 137 yards)

- 2 balls 2204 New Fern

### Needles:

- One 16" circular each size US 3 and 5 (3.25 and 3.75 mm)
- One set double pointed needles (dpns) size US 5 (3.75 mm)

### Or size to obtain gauge.

- Stitch marker

**GAUGE:** 22 sts and 28 rows = 4" in Lace Pattern repeat with larger needles. **Take time to save time, check your gauge**

**NOTE:** This yarn will relax *a lot* during/after blocking, resulting in a loose-fitting beret.

### SPECIAL TERMS:

**m1:** Insert LH needle under horizontal strand between st just worked and next st, from the front to the back, knt through the back loop (1 st increased)

**yo:** Yarn over (1 st increased)

**k2tog:** Knit 2 sts together (1 st decreased)

**ssk:** Slip 2 sts, 1 at a time, knitwise to the RH needle; return sts to LH needle in turned position and knit them together through the back loops (1 st decreased)

**sk2p:** Slip 1 st knitwise from the LH needle to the RH needle, k2tog, pass slipped st over knit st created by k2tog (2 sts decreased)



### ABBREVIATIONS

**approx:** approximately

**beg:** begin(ning)

**CO:** cast on

**dec('d):** decrease(d)

**dpn(s):** double pointed needle(s)

**inc('d):** increase(d)

**k:** knit

**k2tog:** see Special Terms

**LH:** left hand

**m1:** see Special Terms

**meas:** measures

**p:** purl

**patf:** pattern

**pc:** piece

**rem:** remain(ning)

**rep(s):** repeat(s)

**RH:** right hand

**rnd(s):** round(s)

**RS:** right side

**sk2p:** see Special Terms

**ssk:** see Special Terms

**st(s):** stitch(es)

**yo:** see Special Terms

## PATTERN STITCHES:

### 1 x 1 Rib: (multiple of 2 sts)

Rnd 1: \*K1, p1; rep from \* around

Rep rnd 1 for 1 x 1 Rib

### Lace Pattern (multiple of 6 sts + 24)

(also, see chart)

Rnd 1: Ssk, yo, k2, k2tog, yo, k1, yo, sk2p, yo, k1, yo, ssk, k2, yo, k2tog, k1, k2tog, yo, k1, yo, ssk, \*k1, k2tog, yo, k1, yo, ssk; rep from \* to last st, k1.

Rnd 2 and all even rounds: Knit

Rnd 3: Ssk, k3, yo, k2tog, yo, k3, yo, ssk, yo, k3, [k2tog] 2 times, yo, k3, yo, \*sk2p, yo, k3, yo; rep from \* to last 2 sts, ssk.

Rnd 5: Ssk, [k2, yo] 2 times, ssk, k1, k2tog, [yo, k2] 2 times, k2tog, k1, yo, ssk, k1, k2tog, yo, \*k1, yo, ssk, k1, k2tog, yo; rep from \* to last st, k1.

Rnd 7: Ssk, k1, yo, k3, yo, ssk, k1, k2tog, yo, k3, yo, k1, k2tog, k2, yo, sk2p, yo, \*k3, yo, sk2p, yo; rep from \* to last 2 sts, k2.

Rep rnds 1–8 for Lace Patt.

### Lace Decrease Pattern (multiple of 6 sts + 24 dec'd to multiple of 2 sts + 8)

(also, see chart)

Rnd 1: Ssk, yo, k2, k2tog, yo, k1, yo, sk2p, yo, k1, yo, ssk, k2, yo, k2tog, k1, k2tog, yo, k1, yo, ssk, \*k1, k2tog, yo, k1, yo, ssk; rep from \* to last st, k1

Rnd 2, 4: Knit

Rnd 3: [Ssk] 2 times, k1, k2tog, yo, k3, yo, ssk, k1, [k2tog] 3 times, yo, k3, yo, \*sk2p, yo, k3, yo; rep from \* to last 2 sts, ssk—multiple of 6 sts + 20.

Rnd 5: Ssk, k1, k2tog, yo, k3, yo, ssk, k1, k2tog, p1, \*ssk, k1, k2tog, p1; rep from \* to end—multiple of 4 sts + 16.

Rnds 6 and 8: Knit the knit sts and purl the purl sts as they face you.

Rnd 7: [Ssk] 2 times, sk2p, [k2tog] 2 times, p1, \*sk2p, p1; rep from \* to end—multiple of 2 sts + 8.

Work rnds 1–8 for Lace Dec Patt.

## BERET

With smaller circular needle, CO 114 sts. Join to beg working in-the-rnd, being careful not to twist sts. Place marker for beg-of-rnd.

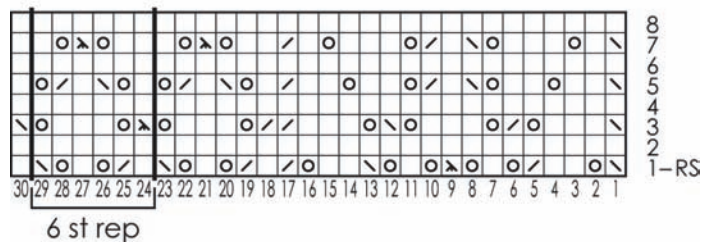
**Begin 1 x 1 Rib;** work even until pc meas 3/4" from beg. **Inc Rnd:** K18, \*m1, k4; rep from \* around—138 sts. **Change to larger needle and Lace Patt;** work even for 48 rnds, ending after rnd 8 of patt. **Change to Lace Dec Patt;** work 8 rnds, changing to dpns when necessary—46 sts rem. Next Rnd: K1, sk2p, k1, \*k5, sk2p; rep from \* to last st, k1—34 sts rem. Knit 1 rnd. Next Rnd: K4, \*sk2p, k2; rep from \* to end—22 sts rem. Knit 1 rnd.

## FINISHING

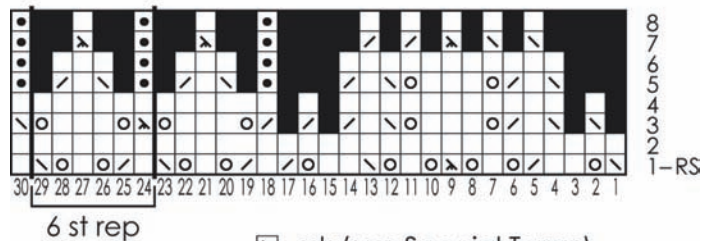
Break yarn leaving approx 6" tail. Draw tail through rem sts and pull tight. Wet block hat to desired size over a dinner plate.



**Lace Chart**  
(multiple of 6 sts + 24; 8 rnd rep)



**Lace Decrease Chart**  
(multiple of 6 sts + 24; 8 rnds)



- knit
- purl
- no stitch
- ⊗ ssk (see Special Terms)
- ⊞ k2tog (see Special Terms)
- ⊞ sk2p (see Special Terms)
- ⊗ yo (see Special Terms)