

Classic Elite Yarns

A Slouch for all Seasons



Designed by: Melissa Lynn

SIZES: One size

Finished Measurements: 20" circumference (stretched)

MATERIALS:

Bam Boo by **Classic Elite** (100% bamboo; 50 gram ball = approx 77 yards) (shown in photo)
 • 3 balls 4985 Tangerine

OR

Provence by **Classic Elite** (100% mercerized Egyptian cotton; 100 gram hank = approx 205 yards) (view photos in Web-Letter 48)

• 1 hank 2623 Biddeford Shrimp

Needles

- One 16" circular each size US 3 and 6 (3.25 and 4 mm)
- One set double pointed needles (dpn) size US 6 (4 mm)
- Stitch marker

SPECIAL TERMS:

k1-f/b: Knit into the front loop, then the back loop of next st (1 st increased).

k2tog: Knit 2 sts together (1 st decreased).

yo: Yarn over (1 st increased).

ssk: (slip, slip, knit) Slip 2 sts, 1 at a time, knitwise to the RH needle; return sts to LH needle in turned position and knit them together through the back loops (1 st decreased).

PATTERN STITCHES:

Circular Stockinette Stitch (St st):

Knit every rnd.

1 x 1 Rib: (multiple of 2 sts)

Rnd 1: *K1, p1; rep from * around.

Rnd 2: Knit the knit sts and purl the purl sts as they face you.

Rep Rnd 2 for 1 x 1 Rib.

Eyelet Pattern (multiple of 10 sts)

Rnd 1: *K6, [k2tog, yo] 2 times; rep from * to end.

Rnd 2: Knit.

Rep Rnds 1 and 2 for Eyelet Patt.

Decrease Pattern: (multiple of 20 sts dec'd to multiple of 1 st)

Rnd 1: *Ssk, k4, [k2tog, yo] 2 times; rep from * to end—108 sts rem.

Rnd 2 and all even rnds: Knit.

Rnd 3: *Ssk, k3, [k2tog, yo] 2 times; rep from * to end—96 sts rem.

Rnd 5: *Ssk, k2, [k2tog, yo] 2 times; rep from * to end—84 sts rem.

Rnd 7: *Ssk, k1, [k2tog, yo] 2 times; rep from * to end—72 sts rem.

Rnd 9: *Ssk, [k2tog, yo] 2 times; rep from * to end—60 sts rem.

Rnd 11: *Ssk, k1, k2tog, yo; rep from * to end—48 sts rem.

Rnd 13: *Ssk, yo; rep from * to end.

Rnd 15: *Ssk; rep from * to end—24 sts rem.

Rnds 17 and 19: Rep Rnd 15—6 sts rem.

Rnd 20: Knit.

Work Rnds 1–20 for Dec Patt.

GAUGE: 20 sts and 30 rows = 4" in Circular Stockinette Stitch with larger needle. **Take time to save time, check your gauge.**

HAT

With smaller needle, CO 100 sts. Join to beg working in-the-rnd being careful not to twist sts. Place marker (pm) for beg-of-rnd.

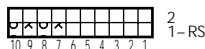
Change to larger needle and Begin 1 x 1 Rib; work for 12 rnds. **Inc Rnd:** *K4, k1-f/b; rep from * to end—120 sts. **Change to Eyelet Patt;** work until pc meas 7½" from beg, end Rnd 2 of Eyelet Patt. **Change to Dec Patt;** work for 20 rnds, change to dpn when necessary—6 sts rem.

FINISHING

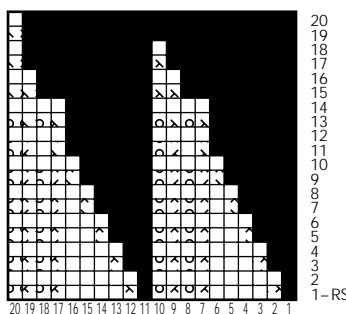
Break yarn leaving approx 8" tail. Thread tail through rem sts 2 times and fasten off. Block pc lightly.



Eyelet Chart
(multiple of 10 sts; 2 rnd rep)



Dec Chart
(multiple of 20 sts dec'd to 1 st; 20 rnds)



- Knit
- No Stitch
- ssk (see Special Terms)
- k2tog (see Special Terms)
- yo (see Special Terms)

ABBREVIATIONS

- approx** – approximately
- beg** – begin(ning)
- CO** – Cast On
- dec** – decrease
- dpn** – double pointed needle(s)
- inc** – increase
- k** – knit
- k1-f/b** – see Special Terms
- k2tog** – see Special Terms
- LH** – Left Hand
- meas** – measures
- p** – purl
- patt** – pattern
- pc** – piece
- pm** – place marker
- rem** – remain(ning)
- rep** – repeat
- RH** – Right Hand
- rnd(s)** – round(s)
- ssk** – see Special Terms
- St st** – Stockinette Stitch
- st(s)** – stitch(es)
- yo** – See Special Terms