

Classic Elite Yarns

Skye Tweed Jacket



Designed by: Liz Adams

SIZES: Small (Medium, Large, Extra Large)
Finished Measurements: 36 (40½, 45½, 50½)"

MATERIALS:

Skye Tweed by **Classic Elite** (100% wool; 50 gram hank = approx 110 yards)

• 14 (15, 17, 18) hanks 1235 Spring Green

Needles

- One pair size US 6 (4 mm)
- One 29" circular size US 6 (4mm)

Or size to obtain gauge

- Cable needle (cn)
- Stitch markers
- Stitch holders
- Three ¾" buttons

GAUGE: 19½ sts and 35 rows = 4" in Seed Stitch (Seed st). **Take time to save time, check your gauge.**

SPECIAL TERMS:

Ddec: (Double decrease) Slip 2 sts together as if to knit, k1, pass 2 slipped sts over (p2sso) (2 sts decreased).

k1-f/b: Knit into the front loop, then the back loop of next st (1 st increased)

PATTERN STITCHES:

Seed Stitch (Seed st): (multiple of 2 sts)

Row 1: (RS) *K1, p1; rep from * across.
 Row 2: Purl the knit sts and knit the purl sts as they face you.
 Rep Row 2 for Seed st.

Aran Motif: (14 sts; 22 rows)

See Chart

Notes:

1. Jacket is worked in one piece to underarms, then Fronts and Back are worked separately to shoulders.
2. Garment is worked back and forth on a circular needle to accommodate large number of sts.
3. Buttonholes are worked at the same time as garment. Work buttonholes on RS rows as follows: Work 3 sts, BO 2 sts, work to end. (WS) CO 2 sts over BO sts to complete buttonhole.
4. Slip markers on every row.

BODY

Small Flap: (make 4)

CO 24 (24, 28, 28) sts. **Begin Seed st;** work even until piece meas 3½" from beg, end RS row.

Medium Flap: (make 2)

CO 28 (34, 36, 42) sts; work as for Small Flap.

Large Flap: (make 1)

CO 48 (58, 62, 74) sts; work as for Small Flap.

Join Flaps: With WS facing, using circular needle; work as est across 28 (34, 36, 42) sts of Medium Flap, place marker (pm), [24 (24, 28, 28) sts of Small Flap, pm] twice, 48 (58, 62, 74) sts of Large Flap, pm, [24 (24, 28, 28) sts of Small Flap, pm] twice, 28 (34, 36, 42) sts of Medium Flap—200 (222, 246, 270) sts. Work 2 rows even, end WS row. **Est Aran Motif:** (RS) *Work to 7 sts before marker, work 14 sts of Aran Motif from chart across next 7 sts and across 7 sts following marker; rep from * 5 times, work to end—206 (228, 252, 276) sts. Work as est until Row 22 of chart is complete, **and at the same time;** work first buttonhole in Right Front on Row 9 (9, 13, 13) of Chart, end WS row—182 (204, 228, 252) sts. (RS) Dec 1 st in each Aran Motif to maintain Seed st as originally est—176 (198, 222, 246) sts rem. Remove markers. Cont in Seed st; **and at the same time,** work 2 rem buttonholes spaced 16 (16, 18, 18) rows apart. Work even until piece meas 14½ (14, 14½, 14)" from beg, end WS row. **Divide for Armholes and Shape Lapels:** (RS) K1-f/b, work 40 (47, 53, 58) sts and place on holder [Right Front], BO next 8 (10, 12, 16) sts, work 78 (82, 90, 96) sts and place on holder [Back], BO next 8 (10, 12, 16) sts, work 40 (47, 53, 58) sts, k1-f/b [Left Front]—42 (49, 55, 60) sts for Left Front.

LEFT FRONT

(WS) Cont on Left Front sts only; work 1 row even. **Shape Armholes:** (RS) At armhole edge, BO 2 sts 1 (1, 2, 3) times, then dec 1 st every 4 rows once; **and at the same time,** cont to Shape Lapel at end of RS row, every 10 rows 4 times—43 (50, 54, 57) sts. Work even until armhole meas 5½ (6, 6½, 7)" from beg of shaping, end RS row. **Shape Neck:** (WS) At neck edge, BO 19 (19, 25, 25) sts once, 2 sts 1 (4, 3, 4) times, 1 st 1 (0, 0, 0) time—21 (23, 23, 24) sts rem for shoulder. Work even until armhole meas 8 (8½, 9, 9½)" from beg of shaping, end WS row. **Shape Shoulder:** At beg of RS rows only, BO 4 (5, 5, 5) sts 4 (3, 3, 4) times, 5 (4, 4, 4) sts 1 (2, 2, 1) times.

BACK

With WS facing, return 78 (82, 90, 96) sts for Back to needle; rejoin yarn. Work 1 row even. **Shape Armholes:** (RS) BO 2 sts at beg of next 2 (2, 4, 6) rows, then dec 1 st each side every 4 rows once—72 (76, 80, 82) sts rem. Work even until armhole meas 8 (8½, 9, 9½)" from beg of shaping, end WS row. **Shape**



ABBREVIATIONS

- approx**—approximately
- beg**—begin(ning)
- BO**—bind off
- CO**—cast on
- cn**—cable needle
- Ddec**—see Special Terms
- dec**—decrease
- EOR**—every other row
- est**—establish(ed)
- inc**—increase
- k**—knit
- k1-f/b**—see Special Terms
- meas**—measures
- p**—purl
- pm**—place marker
- pat**—pattern
- rem**—remain(ning)
- rep**—repeat
- RS**—right side
- st(s)**—stitch(es)
- tog**—together
- WS**—wrong side

Shoulders: (RS) BO 4 (5, 5, 5) sts at beg of next 8 (6, 6, 8) rows, then 5 (4, 4, 4) sts at beg of next 2 (4, 4, 2) rows—30 (30, 34, 34) sts rem for neck. Place rem sts on holder.

RIGHT FRONT

With WS facing, return 42 (49, 55, 60) sts for Right Front to needle; rejoin yarn. Work as for Left Front, rev all shaping by working Armhole and Shoulder shaping at beg of WS rows, and Neck and Lapel shaping at beg of RS rows.

SLEEVES

Right Flap: CO 24 sts. **Begin Seed st;** work in even until piece meas 3½" from beg, end RS row. Break yarn and leave sts on holder.

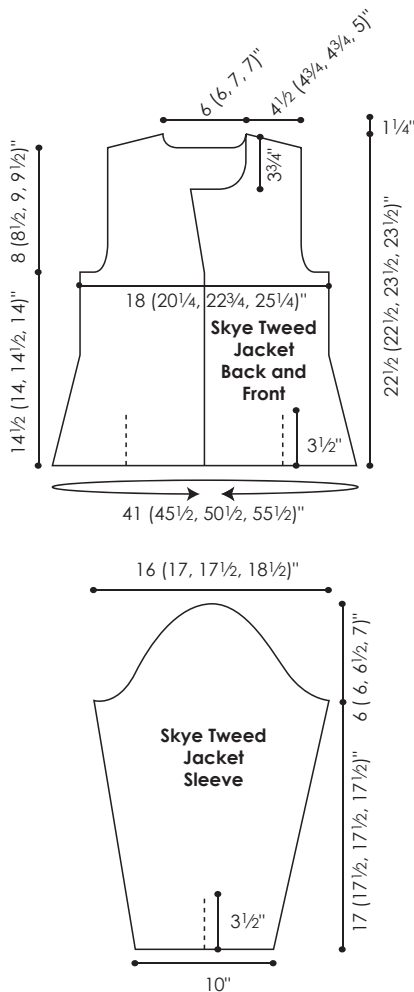
Left Flap: CO 24 sts; work as for Right Flap, end RS row. Do not break yarn.

Join Flaps: With WS facing work 24 sts of Left Flap, then 24 sts of Right Flap—48 sts. Work 2 rows even, end WS row. **Est Aran Motif:** (RS) Work 17 sts in patt, pm, work 14 sts of Aran Motif from chart, pm, 17 sts in patt. **Shape Sleeve:** Inc 1 st each side every 4 rows 0 (0, 0, 7) times, every 6 rows 5 (10, 19, 14) times, then every 8 rows 10 (7, 0, 0) times—78 (82, 86, 90) sts; **and at the same time,** when Row 22 of chart is complete, end WS row. (RS) Work to 1 st before second marker, work 2 sts tog to maintain Seed st as originally est. Remove markers. Work even until piece meas 17 (17½, 17½, 17½)" from beg, end WS row. **Shape Cap:** (RS) BO 4 (5, 6, 8) sts at beg of next 2 rows, 2 sts at beg of next 2 (4, 4, 4) rows, then dec 1 st each side EOR 2 (2, 2, 0) times, every 4 rows 8 (7, 8, 10) times—46 sts rem. Work even until cap meas 4¾ (4¾, 5¼, 5¾)" from beg of shaping, end WS row. (RS) BO 2 sts at beg of next 2 rows, 3 sts at beg of next 2 rows, 4 sts at beg of next 4 rows, then 5 sts at beg of next 2 rows—10 sts rem. BO rem sts.

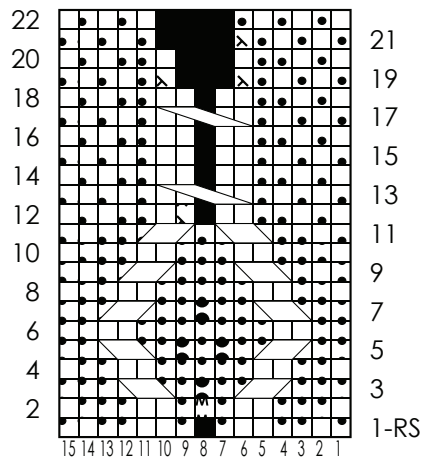
FINISHING

Block pieces to measurements. Sew shoulder seams. Set in sleeves; sew sleeve seams. **Collar:** With RS facing, using circular needle, beg at Right Front neck edge, pick up and knit 24 (24, 28, 28) sts along neck edge, work 30 (30, 34, 34) sts for Back neck as est from holder, pick up and knit 24 (24, 28, 28) sts along Left Front neck edge—78 (78, 90, 90) sts. **Begin Seed st and Shape Collar:** (RS) Inc 1 st each side every 4 rows 2 (2, 3, 3) times—82 (82, 96, 96) sts. Work even until Collar meas 1 (1, 1½, 1½)" from pick up row, end WS row. (RS) Inc 6 (6, 8, 8) sts evenly across next 2 rows—94 (94, 112, 112) sts. Cont as est, inc 1 st each side every 4 rows 3 (3, 4, 4) times—100 (100, 120, 120) sts. Work even until Collar meas 2½ (2½, 3, 3)" from pick up row. BO all sts in patt. Sew edge of Collar neatly to BO edge of Lapel.

Sample knit by Liz Adams.



Aran Motif
(14 st panel; 22 rows)



- Knit on RS, purl on WS
- Purl on RS, knit on WS
- No stitch
- Make 1 – Increase 1 st
- Bobble: K into front, back and front of st, turn, p3, turn, k3, turn, p3, turn, double dec
- K2tog of RS, p2tog on WS
- Slip 1 st to cn, hold in back; k2; p1 from cn
- Slip 2 st to cn, hold in front; p1; k2 from cn
- Slip 2 sts to cn, hold in front; k2; k2 from cn