

Silky Alpaca Lace Openwork Scarf

designed by Tonia Barry

The Yarn

Silky Alpaca Lace

70% Alpaca, 30% Silk

Silky Alpaca Lace is a beautiful blend of fibers, spun into a gossamer yarn that knits into amazing lightweight pieces.

The alpaca in this yarn provides warmth and a soft halo; The silk adds a subtle sheen to the knitted stitches. Worked in lace with larger needles, Silky Alpaca Lace makes lovely, light-as-air shawls, garments and accessories.

The Pattern

Skill Level: Intermediate

Finished Measurements: 10½" wide and 52" long

YARN:

Silky Alpaca Lace by **Classic Elite**

(70% Baby Alpaca, 30% Silk; 50 gram hank = approx 440 yards)

1 ball of 2465 Tropical Fruit

NEEDLES AND OTHER MATERIALS

Knitting needles in size US 4 (3.5 mm)
or size to obtain gauge

GAUGE: 19 sts and 36 rows = 4" in Openwork Pattern, blocked. **Take time to save time, check gauge.**



Classic Elite Yarns



Thank you to artist Janet Wolahan for letting us photograph this week's Web-Letter pattern in her studio.



ABBREVIATIONS

- approx:** approximately
BO: bind off
CO: cast on
k: knit
k2tog: knit 2 sts together (1 st decreased)
meas: measure(s)
p: purl
pc: piece
rep: repeat
RS: right side
ssk: slip 2 sts, 1 at a time, knitwise to the RH needle; return sts to LH needle in turned position and knit them together through the back loops (1 st decreased)
st(s): stitch(es)
WS: wrong side
yo: yarn over (1 st increased)

SPECIAL TERMS

- M5:** In the next st, k1, yo, k1, yo, k1 (5 sts made in 1)
s2kp: Slip 2 sts knitwise, from the LH needle to the RH needle, k1, pass the 2 slipped sts over the k st (2 sts decreased)

PATTERN STITCHES:

Openwork Pattern: (multiple of 4 sts + 16; 12 row rep)

(also, see chart)

- Row 1: (RS) K3, k2tog, yo, p1, k1, p1, *yo, ssk, k2tog, yo; rep from * to last 8 sts, end p1, k1, p1, yo, ssk, k3.
 Row 2: P5, k1, p1, k1, *p3, k1; rep from * to last 8 sts, end k1, p1, k1, p5.
 Row 3: K3, yo, ssk, p1, k1, p1, *k2tog, yo twice, ssk; rep from * to last 8 sts, end p1, k1, p1, k2tog, yo, k3.
 Row 4: P5, k1, p1, k1, *p1, k1, p2; rep from * to last 8 sts, end k1, p1, k1, p5.
 Row 5: K3, k2tog, yo, p1, M5, p1, *yo, ssk, k2tog, yo; rep from * to last 8 sts, end p1, M5, p1, yo, ssk, k3.
 Row 6: [P5, k1] twice, *p3, k1; rep from * to last 12 sts, end [k1, p5] twice.
 Row 7: K3, yo, ssk, p1, ssk, k1, k2tog, p1, *k2tog, yo twice, ssk; rep from * to last 12 sts, end p1, ssk, k1, k2tog, p1, k2tog, yo, k3.
 Row 8: P5, k1, p3, k1, *p1, k1, p2; rep from * to last 10 sts, end k1, p3, k1, p5.
 Row 9: K3, k2tog, yo, p1, s2kp, p1, *yo, ssk, k2tog, yo; rep from * to last 10 sts, end p1, s2kp, p1, yo, ssk, k3.
 Row 10: P5, k1, p1, k1, *p3, k1; rep from * to last 8 sts, end k1, p1, k1, p5.
 Row 11: Rep row 3.
 Row 12: Rep row 4.
 Rep rows 1-12 for Openwork Pattern.

Stockinette Stitch (St st): Knit on RS, purl on WS.

NOTE: On Openwork Pattern row 6, stitch count increases to 64 sts. Sts are then decreased back to 56 on row 9.

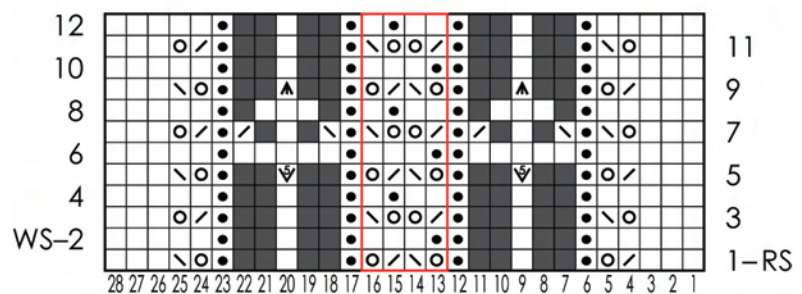
SCARF

CO 56 sts. (WS) work 3 rows in St st. Begin Openwork Pattern, work 27 repeats of 12 row pattern, ending after RS row 9 of pattern. (WS) Work 3 rows in st st. BO all sts.

FINISHING

Block pc to meas.

Openwork Chart
(multiple of 4 sts + 16; 12 row rep)



- knit on RS, purl on WS
- purl on RS, knit on WS
- yo
- k2tog
- ssk
- s2kp (see Special Terms)
- M5 (see Special Terms)
- pattern repeat
- no stitch