

# Classic Elite Yarns

## Renaissance Rollneck Pullover

### SIZES:

Small (Medium, Large, Extra Large)

### Finished Measurements:

39½ (43, 46, 49)''

### MATERIALS:

**Renaissance** by **Classic Elite** (100% wool, 50 gram hank = approx. 110 yards)

• 11 (13, 14, 15) hanks 7189 Paris Pink

### Needles

- One pair size US 7 (4.5 mm)
- One 16'' circular needle size US 7 (4.5 mm)

### Or size to obtain gauge

- Stitch holder

**GAUGE:** 20 sts and 26 rows = 4'', in Diamond pattern.

**Take time to save time, check your gauge.**

### PATTERN STITCHES:

**Stockinette Stitch (St St):** Knit on RS, purl on WS.

**Diamond: (multiple of 8 sts + 1)**

See Chart



### BACK

Cast on 99 (107, 115, 123) sts; work 4 rows in St st, end wrong side row. **Establish pattern:** (right side) Work 1 st in St st, 97 (105, 113, 121) sts in Diamond pattern from chart, 1 st in St st. Work as established until piece measures 14 (14, 15, 15)'' from beginning, end wrong side row. **Shape Armhole:** (right side) Bind off 5 sts at beginning of next 2 rows. Cont as established until Armhole measures 9 (9, 9½, 9½)'' from shaping; bind off all sts.

### FRONT

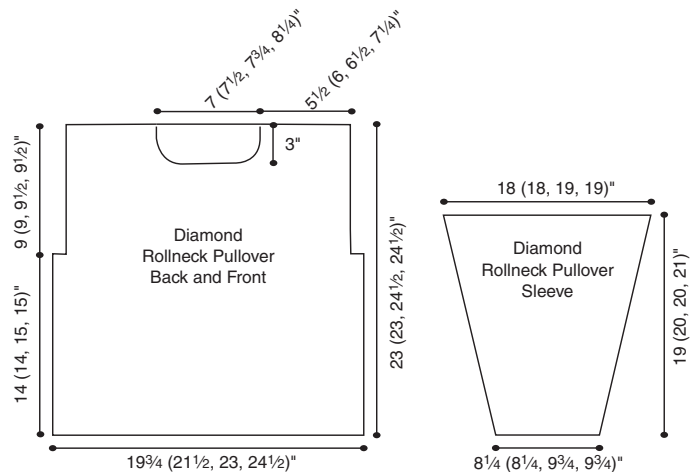
Work as for Back until Armhole measures 6 (6, 6½, 6½)'' from shaping, end wrong side row – 89 (97, 105, 113) sts. **Shape Neck:** (right side) Work 32 (35, 38, 41) sts, place center 25 (27, 29, 31) sts on holder; join second ball of yarn, work to end. Working both sides at the same time, at each neck edge, decrease 1 st every other row 5 times – 27 (30, 33, 36) sts remain each shoulder. Work even until Armhole measures same as Back to shoulders; bind off all sts.

### SLEEVES

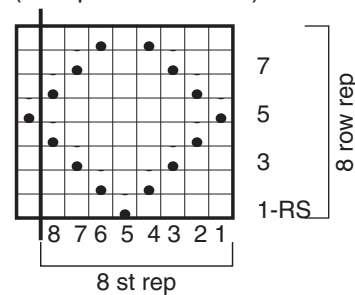
Cast on 41 (41, 49, 49) sts; work 4 rows in St st, end wrong side row. **Change to Diamond pattern from chart.** Work even until piece measures 1'' from beginning, end wrong side row. **Shape Sleeve:** (right side) Increase 1 st each side on this row, then every 4 rows 20 (17, 11, 10) times, every 6 rows 4 (7, 11, 12) times, working increase sts in Diamond pattern as they become available - 91 (91, 95, 95) sts. Work even until piece measures 19 (20, 20, 21)'' from beginning; bind off all sts.

### FINISHING

Block pieces to measurements. Sew shoulder seams. Set in sleeves; sew side and Sleeve seams. **Neckband:** With right side facing, using circular needle, pick up and knit 90 (94, 98, 102) sts evenly around neck edge; place marker for beginning of round. Work in St st until band measures 1'' from pick up round; bind off all sts.



**Diamond Chart**  
(multiple of 8 sts + 1)



- Knit on RS, purl on WS
- Purl on RS, knit on WS