

Classic Elite Yarns

Provence Summer Breeze Headband



Designed by: Kristen TenDyke

SIZES: One Size

Finished Measurements: 3½" wide x 21" long
or desired length

MATERIALS:

Provence by **Classic Elite** (100% mercerized Egyptian cotton; 100 gram hank = approx 205 yards)

- 1 hank 2623 Biddeford Shrimp

Needles

- One pair size US 6 (4 mm)

Or size to obtain gauge

- Tapestry needle

SPECIAL TERMS:

m1-r: (make 1 right slanting) Insert LH needle under horizontal strand between st just worked and next st from the back to the front, knit through the front loop (1 st increased).

m1-l: (make 1 left slanting) Insert LH needle under horizontal strand between st just worked and next st from the front to the back, knit through the back loop (1 st increased).

m1p: (make 1 purlwise) Insert LH needle under horizontal strand between st just worked and next st, from the back to the front, purl (1 st increased).

yo: Yarn over (1 st increased).

k2tog: Knit 2 sts together (1 st decreased).

sk2p: Slip 1 st knitwise, from the LH needle to the RH needle, k2tog, pass slipped st over knit st created by k2tog (2 sts decreased).

ssk: (slip, slip, knit) Slip 2 sts, 1 at a time, knitwise to the RH needle; return sts to LH needle in turned position and knit them together through the back loops (1 st decreased).

p2tog: Purl 2 sts together (1 st decreased).

GAUGE: 22 sts and 24 rows = 4" in Stockinette Stitch. **Take time to save time, check your gauge.**

PATTERN STITCHES:

Stockinette Stitch (St st): Knit on RS, purl on WS.

Rib Panel: (panel of 6 sts)

Row 1: (WS) P2, k2, p2.

Row 2: Knit the knit sts and purl the purl sts as they face you.

Rep Row 2 for Rib Panel.



ABBREVIATIONS

approx – approximately

beg – begin(ning)

CO – Cast On

dec – decrease

est – establish(ed)

inc – increase

k – knit

k2tog – see Special Terms

LH – Left Hand

m1-l – see Special Terms

m1p – see Special Terms

m1-r – see Special Terms

meas – measures

p – purl

p2tog – see Special Terms

patt – pattern

pc(s) – piece(s)

rem – remain(ning)

rep – repeat

RH – Right Hand

RS – Right Side

sk2p – see Special Terms

ssk – see Special Terms

st(s) – stitch(es)

St st – Stockinette Stitch

tbl – through the back loop

WS – Wrong Side

wyib – With Yarn In Back

wyif – With Yarn In Front

yo – see Special Terms

Lace Increase Pattern: (panel of 0 sts inc'd to 9 sts)

(also, see chart)

Row 1: (RS) Yo—1 st.

Rows 2 and 4: Purl.

Row 3: Yo, k1, yo—3 sts.

Row 5: [Yo] 2 times, sk2p, [yo] 2 times—5 sts.

Row 6: [P1, p1-tbl] into double yo, p1, [p1, p1-tbl] into double yo.

Row 7: Yo, k1, [yo] 2 times, sk2p, [yo] 2 times, k1, yo—9 sts.

Row 8: P2, *(p1, p1-tbl) into the double yo, p1; rep from * 1 time, p1.

Work Rows 1–8 for Lace Inc Patt.

Lace Panel: (panel of 9 sts)

(also, see chart)

Row 1: (RS) Yo, sk2p, *[yo] 2 times, sk2p; rep from * 1 time, yo.

Row 2: P2, *(p1, p1-tbl) into the double yo, p1; rep from * 1 time, p1.

Rep Rows 1–2 for Lace Panel.

Lace Decrease Pattern: (panel of 21 sts dec'd to 12 sts)

(also, see chart)

Row 1: (RS) K2, p2, k2, yo, [sk2p, yo] 3 times, k2, p2, k2—19 sts.

Row 2 and all WS rows: Knit the knit sts and purl the purl sts as they face you.

Row 3: K2, p2, k2, yo, sk2p, k1, sk2p, yo, k2, p2, k2—17 sts.

Row 5: K2, p2, k1, ssk, yo, sk2p, yo, k2tog, k1, p2, k2—15 sts.

Row 7: K2, p2, k2, sk2p, k2, p2, k2—13 sts.

Row 9: K2, p2, k2, k2tog, k1, p2, k2—12 sts.

Work Rows 1–9 for Lace Dec Patt.

Kitchener Stitch:

Step 1: Bring threaded tapestry needle through first st on front needle as if to knit and slip this st off needle.

Step 2: Bring threaded tapestry needle through next st on front needle as if to purl and leave st on needle.

Step 3: Bring threaded tapestry needle through first st on back needle as if to purl and slip this st off needle.

Step 4: Bring threaded tapestry needle through next st on back needle as if to knit and leave st on needle.

Rep Steps 1–4 until no sts rem on needles.

For more information, visit our website: <http://www.classiceliteyarns.com/WebLetter/Stitches/Grafting/Grafting.php>

NOTE:

Slip the first stitch of every row purlwise with the yarn on the WS.

HEADBAND

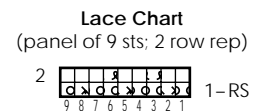
Using provisional cast on (see tutorial on our website: <http://www.classiceliteyarns.com/WebLetter/Stitches/ProvCO/ProvCO.php>)

CO 6 sts. **Est St st:** (RS) Slip 1 st purlwise wyib (edge st, slip on RS, purl on WS), work to last st in St st, k1 (edge st, knit on RS, slip purlwise wyif on WS). (WS) Work 3 rows even as est, end WS row. **Inc Row 1:** (RS) Slip 1, k1, m1-r, k2, m1-l, k2—8 sts. (WS) Work 3 rows even, end WS row. **Inc Row 2:** (RS) Slip 1, k2, m1-r, k2, m1-l, k3—10 sts. (WS) Work 1 row even. **Inc Row 3:** (RS) Slip 1, k2, m1p, k4, m1p, k3—12 sts. Next Row: (WS) Slip 1, p2, k1, p4, k1, p3. **Inc Row 4:** (RS) Slip 1, k2, p1, m1p, k4, m1p, p1, k3—14

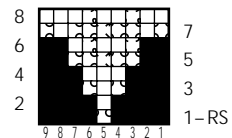
sts. **Est Rib Panel:** (WS) Slip 1, [work 6 sts in Rib Panel] 2 times, k1. (RS) Work 3 rows even, end WS row. **Est Lace Inc Patt:** (RS) Slip 1, work 6 sts in Rib Panel, work Lace Inc Patt, work 6 sts in Rib Panel, k1. Work as est for 7 more rows—23 sts. **Est Lace Panel:** (RS) Slip 1, work 6 sts in Rib Panel, work 9 sts in Lace Panel, work 6 sts in Rib Panel, k1. Work even as est until pc meas 15" from beg, end WS row. **Est Lace Dec Patt:** (RS) Slip 1, work Lace Dec Patt, k1. (WS) Work as est for 8 more rows, end RS Row 9 of Lace Dec Patt—14 sts rem. **Est Rib Panel:** (WS) Slip 1, [work 6 sts in Rib Panel] 2 times, k1. (RS) Work 4 rows even, end WS row. **Dec Row 1:** (RS) Slip 1, k2, p2tog, k4, p2tog, k3—12 sts rem. (WS) Work 1 row even. **Dec Row 2:** (RS) Slip 1, k1, ssk, k4, k2tog, k2—10 sts rem. (WS) Work 1 row even. **Dec Row 3:** (RS) Slip 1, k1, ssk, k2, k2tog, k2—8 sts rem. (WS) Work 3 rows even. **Dec Row 4:** (RS) Slip 1, k1, ssk, k2tog, k2—6 sts rem. (WS) Work even in St st maintaining slipped edge sts until pc meas 21" or desired length, end WS row.

FINISHING

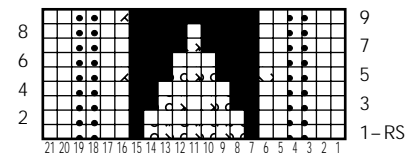
Block pc still on needle to measurements. Slip provisional CO sts to working needle so both needles are pointing in the same direction, when held parallel. Break yarn leaving approx 12" tail. Using threaded tapestry needle, graft both sides together using the Kitchener St.



Lace Increase Chart
(panel of 0 sts inc'd to 9 sts; 8 rows)



Lace Decrease Chart
(panel of 21 sts dec'd to 12 sts; 9 rows)



- Knit on RS, purl on WS
- yo (see Special Terms)
- sk2p (see Special Terms)
- p1-tbl
- Purl on RS, knit on WS
- ssk (see Special Terms)
- k2tog (see Special Terms)

