

Classic Elite Yarns

Provence Child's Cabled Pullover



Updated vintage Classic Elite pattern.

SIZES: 12 mos (18 mos, 2 yrs, 4 yrs)

Finished Measurements: 24 (26½, 29, 31½)"

MATERIALS:

Provence by **Classic Elite** (100% mercerized Egyptian cotton; 100 gram hank = approx 205 yards)

- 3 (3, 4, 4) hanks 2639 Emerald Isle

Needles

- One pair each size US 3 and 6 (3.25 and 4 mm)

Or size to obtain gauge

- One set double pointed needles (dpn) or 16" circular size US 3 (3.25mm)
- Cable needle (cn)
- Stitch markers

GAUGE: 26 sts and 28 rows = 4" in Cable Pattern with larger needles. **Take time to save time, check your gauge.**

SPECIAL TERMS:

C6F: Slip 3 sts to cn, hold in front; k3; k3 from cn.

C6B: Slip 3 sts to cn, hold in back; k3; k3 from cn.

m1: (make 1) Insert LH needle under horizontal strand between st just worked and next st, from the front to the back, knit through the back loop (1 st increased).

m1p: (make 1 purlwise) Insert LH needle under horizontal strand between st just worked and next st, from the back to the front, purl (1 st increased).

PATTERN STITCHES:

Stockinette Stitch (St st):

Straight—Knit on RS, purl on WS.

Circular—Knit every row.

Cable Pattern: (multiple of 24 sts + 2)

(also, see chart on page 2)

Rows 1, 5, 7, 11, 13 and 17: (RS) P2, *k2, p2, [k6, p2] twice, k2, p2; rep from * across.

Row 2 and all WS rows: Knit the knit sts and purl the purl sts as they face you.

Rows 3, 9 and 15: P2, *k2, p2, C6F, p2, C6B, p2, k2, p2; rep from * across.

Rows 19, 23, 25, 29, 31 and 35: P2, *k6, [p2, k2] twice, p2, k6, p2; rep from * across.

Rows 21, 27 and 33: P2, *C6B, [p2, k2] twice, p2, C6F, p2; rep from * across.

Row 36: Rep Row 2.

Rep Rows 1–36 for Cable Patt.



ABBREVIATIONS

approx – approximately

beg – begin(ning)

BO – Bind Off

C6B – see Special Terms

C6F – see Special Terms

CO – Cast On

cn – cable needle

dpn – double pointed needle

EOR – Every Other Row

est – establish(ed)

inc – increase

k – knit

LH – Left Hand

m1 – see Special Terms

m1p – see Special Terms

meas – measures

mos – months

p – purl

patt – pattern

pc(s) – piece(s)

pm – place marker

rem – remain

rep – repeat

rnd – round

RS – Right Side

st(s) – stitch(es)

St st – Stockinette Stitch

WS – Wrong Side

yrs – years

2 x 2 Rib: (multiple of 4 sts + 2)

Row 1: (RS) K2, *p2, k2; rep from * across.
 Row 2: Knit the knit sts and purl the purl sts as they face you.
 Rep Row 2 for 2 x 2 Rib.

NOTE:

1. Work Sleeve inc sts as follows: P2, m1 or m1p according to rib patt, work to last 2 sts as est, m1 or m1p according to rib patt, p2.

BACK

With smaller needles, CO 78 (86, 94, 102) sts. **(RS) Begin St st;** work 4 rows even, end WS row. **Est Patt:** (RS) K2 (0, 0, 2) (edge sts, keep in St st throughout), work 0 (6, 10, 0) sts in 2 x 2 Rib, place marker (pm), work 74 (74, 74, 98) sts in Cable Patt, pm, work 0 (6, 10, 0) sts in 2 x 2 Rib, k2 (0, 0, 2) (edge sts, keep in St st throughout). Work even as est, maintaining edge sts until pc meas 1½" from beg. **Change to larger needles;** work even until pc meas 12 (14, 15, 16)" from beg, end WS row. (RS) BO all sts.

FRONT

Work as for Back until pc meas 10 (12, 13, 14)" from beg, end WS row—78 (86, 94, 102) sts. Pm each side of center 24 (28, 28, 30) sts. **Shape Neck:** (RS) Work to first marker; join second ball of yarn, BO center sts and work to end—27 (29, 33, 36) sts rem each side. Working both sides at the same time, at each

neck edge BO 1 st 4 times—23 (25, 29, 32) sts rem each side for shoulders. Work even until pc meas same as Back to shoulders, end WS row. (RS) BO rem sts.

SLEEVES

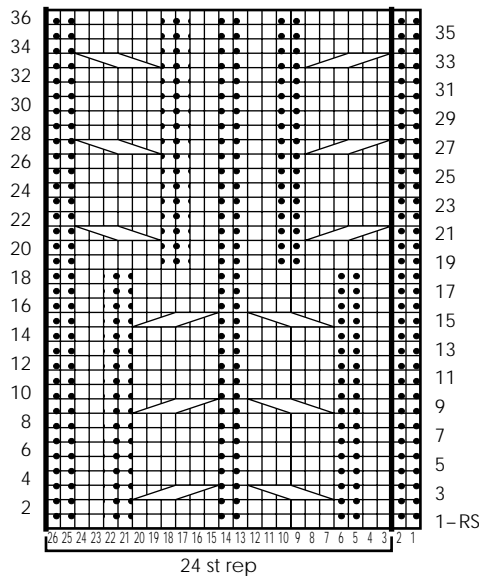
Using smaller needles, CO 38 (38, 46, 46) sts. **(RS) Begin St st;** work 4 rows, inc 4 sts evenly across last row, end WS row—42 (42, 50, 50) sts. **Est Patt:** (RS) Beg with p2, work 8 (8, 12, 12) sts in 2 x 2 Rib, pm, work 26 sts in Cable Patt, pm, beg with k2, work 8 (8, 12, 12) sts in 2 x 2 Rib. Work even as est until pc meas 1½" from beg, end WS row. **Change to larger needles and Shape Sleeve:** (RS) Inc 1 st each side this row (see Note 1), EOR 9 (12, 6, 9) times, then every 4th row 2 (2, 7, 7) times, working inc sts in 2 x 2 Rib as they become available—66 (72, 78, 84) sts. Work even until pc meas 7 (8, 9, 10)" from beg, end WS row. (RS) BO all sts.



FINISHING

Block pcs to measurements being careful not to flatten texture. Sew shoulder seams. Measure down 5 (5½, 6, 6½)" from shoulders on Back and Front, pm; sew Sleeves between markers. Sew side and Sleeve seams. **Neckband:** With RS facing, using dpn or circular needle, pick up and knit 82 (90, 90, 98) sts evenly around neck shaping. **Begin Circular St st;** work even until pc meas 2" from pick-up rnd. BO all sts loosely.



Cable Chart
(multiple of 24 sts + 2; 36 row rep)



- Knit on RS, purl on WS
- Purl on RS, knit on WS
-  Slip 3 sts to cn, hold in front; k3; k3 from cn
-  Slip 3 sts to cn, hold in back; k3; k3 from cn

