

# Classic Elite Yarns

## Princess Daisy Hat



Designed by: Melissa LaBarre

**SIZES:** One size

**Finished Measurements:** 20" circumference

**MATERIALS:**

*Princess* by **Classic Elite** (40% merino, 28% viscose, 10% cashmere, 15% nylon, 7% angora; 50 gram ball = approx 150 yards)

- 2 balls 3446 Regal Teal

**Needles**

- One 16" circular each size US 5 and 6 (3.75 and 4 mm)

**Or size to obtain gauge**

- One set double pointed needles (dpns) size US 6 (3.75 mm)
- Stitch marker

**GAUGE:** 20 sts and 28 rows = 4" in Stockinette Stitch with larger needles. **Take time to save time, check your gauge.**

**SPECIAL TERMS:**

**k1-f/b:** Knit into the front loop, then the back loop of next st (1 st increased)

**Wrap and turn:** Wyib, slip next st purlwise onto RH needle, bring yarn to front of work, return slipped st to LH needle, bring yarn to back of work, then turn work.

**ssk: (slip, slip, knit)** Slip 2 sts, 1 at a time, knitwise to the RH needle; return sts to LH needle in turned position and knit them together through the back loops (1 st decreased).

**k2tog:** Knit 2 sts together (1 st decreased)

**yo:** Yarn over (1 st increased).

**sk2p:** Slip 1 st knitwise, from the LH needle to the RH needle, k2tog, pass slipped st over knit st created by k2tog (2 sts decreased).

**PATTERN STITCHES:**

**Stockinette Stitch:** Knit on RS, purl on WS.

**Circular Garter Stitch (Gtr St):**

Rnd 1: Purl.

Rnd 2: Knit.

Rep Rnds 1 and 2 for Circular Gtr St.

**Daisy Pattern: (multiple of 12 sts)**

(also, see chart)

Rnds 1 and 2: Knit all sts.

Rnd 3: \*K4, ssk, yo, k1, yo, k2tog, k3; rep from \* around.

Rnd 4: Knit all sts.

Rnd 5: \*K3, ssk, yo, k3, yo, k2tog, k2; rep from \* around.

Rnd 6: Knit all sts.

Rnd 7: \*K5, yo, sk2p, yo, k4; rep from \* around.

Rnds 8, 9, and 11: Knit all sts.

Rnds 10 and 12: Purl all sts.

Rep Rnds 1–12 for Daisy Patt.

**BAND**

With smaller circular needles, CO 100 sts. Join to beg working in-the-rnd being careful not to twist sts. Place marker for beg-of-rnd.

**Begin Circular Gtr St;** work 1 rnd even. **Shape with Short-Rows:** Rnd 1: (RS) K80, wrap and turn; (WS) k60, wrap and turn; (RS) knit to end of rnd. Rnd 2: (RS) Purl all sts. Rep these 2 rnds 3 more times.

**RISE**

**Change to larger circular needle and Inc Rnd:** K6, \*k1, k1-f/b; rep from \* to last 6 sts, knit to end—144 sts. **Change to Daisy Patt;** work even for 40 rnds, end after Rnd 4 of Daisy Patt.

**CROWN:**

(also, see chart; change to dpns when necessary)

Rnd 1: \*K1, [ssk] 2 times, yo, k3, yo, [k2tog] 2 times; rep from \* around—120 sts rem.

Rnds 2 and 4: Knit all sts.

Rnd 3: \*K2, ssk, yo, sk2p, k2tog, k1; rep from \* around—96 sts rem.

Rnd 5: \*K1, ssk, k3, k2tog; rep from \* around—72 sts rem.

Rnds 6 and 8: Purl all sts.



Rnd 7: \*K1, ssk, k1, k2tog; rep from \* around—48 sts rem.

Rnd 9: \*K1, ssk, k1; rep from \* around—36 sts rem.

Rnds 10 and 12: Knit all sts.

Rnd 11: \*Ssk, k1; rep from \* around—24 sts rem.

Rnd 13: \*Ssk; rep from \* around—12 sts rem.

Rnd 14: Rep Rnd 13—6 sts rem.

Break yarn and thread tail through rem sts, pull tight, fasten off.

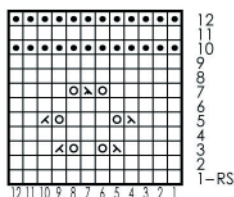
**FINISHING**

Weave in ends. Dampen hat with water and block over a 10" dinner plate for shape.

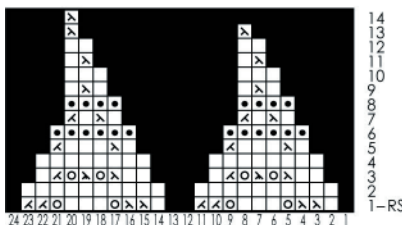
**ABBREVIATIONS**

- approx** – approximately
- CO** – Cast On
- dpn(s)** – double pointed needle(s)
- Gtr st** – Garter Stitch
- inc** – increase
- k** – knit
- k1-f/b** – see Special Terms
- k2tog** – see Special Terms
- LH** – Left Hand
- patt** – pattern
- rem** – remain(ing)
- rep** – repeat
- RH** – Right Hand
- rnd(s)** – round(s)
- RS** – Right Side
- sk2p** – see Special Terms
- ssk** – see Special Terms
- St st** – Stockinette Stitch
- st(s)** – stitch(es)
- WS** – Wrong Side
- wyib** – with yarn in back
- yo** – see Special Terms

**Daisy Chart**  
(multiple of 12 sts; 12 rnd rep)



**Crown Shaping Chart**  
(multiple of 24 sts; 14 rnds)



- Knit
- Purl
- ⊠ ssk (see Special Terms)
- ⊞ k2tog (see Special Terms)
- ⊙ yo (see Special Terms)
- ⊞ sk2p (see Special Terms)