

# Classic Elite Yarns

## Posh Wedding Shrug



Designed by: Cecily Glowik

**SIZES:** Small (Medium, Large, Extra Large)  
**Finished Measurements:** To fit bust sizes 32 (36, 40, 42)"

**MATERIALS:**

*Posh* by Classic Elite (70% silk, 30% cashmere; 50 gram hank = approx 125 yards)

- 3 (4, 4, 4) hanks 10015 Cream

**Needles:**

- One 16" circular each size US 8 and 9 (5 mm and 5.5 mm)

**Or size to obtain gauge**

- Stitch marker
- Tapestry needle
- 3 yards of  $\frac{3}{8}$ " ribbon

**GAUGE:** 18 sts and 20 rows = 4" over either Lace Pattern with smaller needles. **Take time to save time, check your gauge.**

**SPECIAL TERMS:**

**ssk:** (slip, slip, knit) Slip 2 sts, 1 at a time, knitwise to the RH needle; return sts to LH needle in turned position and knit them together through the back loops (1 st decreased).

**k2tog:** Knit 2 sts together (1 st decreased).

**sk2p:** Slip 1 st purlwise, from the LH needle to the RH needle, k2tog, pass slipped st over knit st created by k2tog (2 sts decreased).

**yo:** Yarn over (1 st increased).

**Lace Pattern 1: (multiple of 9 sts + 4)**

Used in model garment.

(also see chart on page 2)

**Circular**—Rnd 1: (RS) K2, \*k1, yo, k2, ssk, k2tog, k2, yo; rep from \* to last 2 sts, k2.

Rnd 2: Knit.

Rnd 3: K2, \*yo, k2, ssk, k2tog, k2, yo, k1; rep from \* to last 2 sts, k2.

Rnd 4: Rep Rnd 2.

Rep Rnds 1–4 for Circular Lace Patt 1.

**Straight**—Row 1: (RS) K2, \*k1, yo, k2, ssk, k2tog, k2, yo; rep from \* to last 2 sts, k2.

Row 2: Purl.

Row 3: K2, \*yo, k2, ssk, k2tog, k2, yo, k1; rep from \* to last 2 sts, k2.

Row 4: Purl.

Rep Rows 1–4 for Straight Lace Patt 1.

**Lace Pattern 2: (multiple of 9 sts + 4)**

Shown in swatch photo only.

(also, see chart on page 2)

Rnd/Row 1: (RS) P3, \*k2tog, [k1, yo] 2 times k1, ssk, p2; rep from \* to last st, p1.



### ABBREVIATIONS

**approx** – approximately

**beg** – begin(ning)

**BO** – Bind Off

**CO** – Cast On

**est** – establish(ed)

**k** – knit

**k2tog** – see Special Terms

**LH** – Left Hand

**meas** – measures

**p** – purl

**patt** – pattern

**pc(s)** – piece(s)

**pm** – place marker

**rep** – repeat

**RH** – Right Hand

**rnd** – round

**RS** – Right Side

**sk2p** – see Special Terms

**ssk** – see Special Terms

**st(s)** – stitch(es)

**WS** – Wrong Side

**yo** – see Special Terms

Rnd/Row 2, all WS rows and all even numbered Rnds: Knit the knit sts and purl the purl sts as they face you.

Rnd/Row 3: P3, \*k2tog, yo, k3, yo, ssk, p2; rep from \* to last st, p1.

Rnd/Row 5: P3, \*k1, yo, ssk, k1, k2tog, yo, k1, p2; rep from \* to last st, p1.

Rnd/Row 7: P3, \*k2, yo, sk2p, yo, k2, p2; rep from \* to last st, p1.

Rnd/Row 8: Rep Rnd/Row 2.

Rep Rnds/Rows 1–8 for Lace Patt 2.

#### Circular 1 x 1 Rib: (multiple of 2 sts)

Rnd 1: \*K1, p1; rep from \* around.

Rnd 2: Knit the knit sts and purl the purl sts as they face you.

Rep Rnd 2 for 1 x 1 Rib.

#### Kitchener Stitch:

*Step 1:* Bring threaded tapestry needle through first st on front needle as if to knit and slip this st off needle.

*Step 2:* Bring threaded tapestry needle through next st on front needle as if to purl and leave st on needle.

*Step 3:* Bring threaded tapestry needle through first st on back needle as if to purl and slip this st off needle.

*Step 4:* Bring threaded tapestry needle through next st on back needle as if to knit and leave st on needle.

Rep Steps 1–4 until no sts rem on needles.

For more information, visit our website: <http://www.classicelityarns.com/WebLetter/Stitches/Grafting/Grafting.php>

**Cable Cast-on Method:** Place a slipknot on LH needle and k1, slip new st onto LH needle; \*insert RH needle between first 2 sts on LH needle, k1 from this position, slip new st onto LH needle. Rep from \* for desired number of sts.

#### NOTE:

The model shrug is knit in Lace Pattern 1, but a second lace pattern is included as another option. A swatch of Lace Pattern 2 is shown in the photo to the right.

#### LEFT BODY

With larger needle CO 58 (58, 67, 67) sts. Join to work in-the-rnd, being careful not to twist sts, place marker (pm) for beg-of-rnd. **Begin Lace Pattern of your choice:** Work for 16 rnds, end Rnd 4 or 8. **Change to smaller needle, est 1 x 1 Rib:** Work in 1 x 1 Rib to last 0 (0, 1, 1) st, k0 (0, 1, 1). Work in 1 x 1 Rib as est for 1", end WS row. **Change to larger needle and the same Lace Pattern as before ;** work as for cuff until pc meas 8" from beg. **Divide for Body;** work back and fourth in rows until pc meas 18 (19, 20, 21)" from beg, end RS row. Slip all sts to holder.

#### RIGHT BODY

Work as for Left Body.

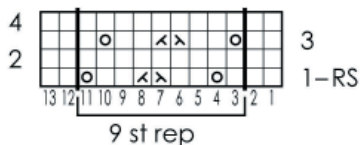
#### FINISHING

Using Kitchener Stitch join the Left Body and Right Body. **Picot Trim:** With RS facing, beg at join, pick up and knit 134 (142, 150, 158) sts around center opening. (WS) Knit. (RS) BO 2 sts, \*Slip the st on the RH needle back to the LH needle. Using Cable Cast-On method, CO 2 sts, BO 4 sts, rep from \* to end. Cut ribbon into two 1½ yard pcs. Thread 1 length through ribbing on each sleeve. Tie in a bow and trim ends to desired length.

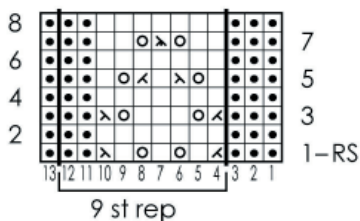


Lace 2 Pattern Swatch

#### Lace 1 Chart (multiple of 9 sts + 4; 4 rnd/row rep)



#### Lace 2 Chart (multiple of 9 sts + 4; 8 rnd/row rep)



- Knit on RS, purl on WS
- Purl on RS, knit on WS
- yo (see Special Terms)
- ⊗ ssk (see Special Terms)
- ⊠ k2tog (see Special Terms)
- ⊡ sk2p (see Special Terms)

