

## October Cowl

designed by  
Betsy Perry

# Classic Elite Yarns

Our small company is primarily staffed by women and has been touched – more than once – by breast cancer. In fact, it's safe to say that everyone at our company has been touched – whether it be a sister, daughter, aunt, mother, cousin, friend or co-worker.

As homage to anyone who has faced this disease, and to the hundreds of thousands we don't personally know,

we came together for our own little pink scarf project. We hope you enjoy these patterns, but most importantly, we want you to remember those touched by breast cancer, and if you are able, to reach out to your favorite worthy charity.

A cure is a wonderful thing. But even more wonderful would be if no one would have to worry about breast cancer affecting her life. Ever.



### The Pattern

**Skill Level:** Intermediate

**SIZES:** One size

**Finished Measurements:** 24" around and 7" tall, blocked

**MATERIALS:**

**Waterlily** by **Classic Elite** (100% superfine merino; 50 gram ball = approx 90 yards)

- 2 balls 1919 Petunia

**Needles**

- One 24" circular size US 9 (5.5 mm)

**Or size to obtain gauge**

- Removable stitch marker

**GAUGE:** 18 sts and 24 rows = 4" in Eyelet Herringbone Pattern. **Take time to save time, check your gauge.**

**ABBREVIATIONS:**

**beg:** beginning

**BO:** bind off

**CO:** cast on

**k:** knit

**LH:** left hand

**p:** purl

**RH:** right hand

**rnd:** round

**st(s):** stitch(es)



For more information about this design and other designs in this collection, visit [www.classicelityarns.com/WebLetter/159/Issue159](http://www.classicelityarns.com/WebLetter/159/Issue159).



### SPECIAL TERMS:

**k2tog:** Knit 2 sts together (1 st decreased)

**RT:** Insert right needle into 2<sup>nd</sup> stitch on LH needle ; knit but do not remove stitch from LH needle; insert RH needle into 1<sup>st</sup> stitch on LH needle and knit it. Slide both worked sts off LH needle.

**yo:** yarn over (1 st increased)

For more information about this and other free patterns in this collection, visit [www.classiceliteyarns.com/WebLetter/159/Issue 159](http://www.classiceliteyarns.com/WebLetter/159/Issue%20159).

## PATTERN STITCHES:

### Cable Cast-on Method:

Place a slipknot on LH needle and k1, slip new st onto LH needle; \*insert RH needle between first 2 sts on LH needle, k1 from this position, leave the first st on LH needle and slip new st on LH needle. Rep from \* for desired number of sts.

### Circular Garter St (Gtr st):

Rnd 1: Purl.

Rnd 2: Knit.

Repeat rnds 1 and 2 for Gtr St.

### Eyelet Herringbone Pattern: (multiple of 9 sts, 12 rnds)

(also see chart)

Rnd 1 and all odd numbered rnds: \*P2, k7; rep from \*.

Rnd 2: \*P2, RT twice, k2tog, yo, k1; rep from \*.

Rnd 4: \*P2, k1, RT, k2tog, yo, RT; rep from \*.

Rnd 6: \*P2, RT, k2tog, yo, RT, k1; rep from \*.

Rnd 8: \*P2, k1, k2tog, yo, RT twice; rep from \*.

Rnd 10: \*P2, k2tog, yo, RT twice, k1; rep from \*.

Rnd 12: \*P2, k1, RT three times; rep from \*.

Repeat rnds 1–12 for Eyelet Herringbone pattern.

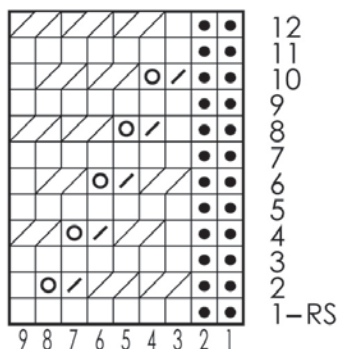
## COWL

Using cable cast-on method, CO 108 sts. Join to begin working in-the-rnd, being careful not to twist sts. Place marker for beg-of-rnd. Work in Gtr St for 3 rnds. **Begin Eyelet Herringbone pattern.** After working three full repeats of pattern, **switch to Gtr St** and work three rnds. BO all sts loosely.

### FINISHING

Weave in ends and block piece to measurements.

### Eyelet Herringbone Pattern (multiple of 9 sts; 12 rnd rep)



- knit
- purl
- ▧ k2tog
- ⊙ yo
- ▨ RT (see Special Terms)