

Classic Elite Yarns

Nederland Opera Mitts

Mary Jane designed these mitts to compliment the Nederland Vest featured in the Fall 2008 issue of *Knitscene*. The left and right mitts are designed to be mirror images of each other, so the beginning of the round lays toward the body on each mitt. To do this, the thumb openings are located in slightly different locations for each mitt. Other than that, the mitts are identical.

Each mitt is worked entirely in the round and begins with the ribbing at the hand where the thumb openings are worked. After the ribbing, there are some stitches increased evenly around, then the Fair Isle Stockinette Stitch pattern begins and is worked without any shaping for 36 rounds.

The shaping is worked at the beginning and end of rounds 37, 42 and 47 of the Fair Isle Increase Pattern as written out in the instructions and also shown on the chart. Once the Fair Isle Increase chart is completed, the ribbing begins again and is worked even for 2 inches before binding off

Designed by: Mary Jane Mucklestone

SIZE: One size; to fit average woman's hand

Finished Measurements:

- 7½" hand circumference;
- 9¾" upper arm circumference;
- 18" length

MATERIALS:

Princess by **Classic Elite** (40% merino, 28% viscose, 15% nylon, 10% cashmere, 7% angora; 50 gram ball = approx 150 yards)

- 1 ball Main Color (MC) — 3428 Major Grey
- 1 ball Color A — 3431 Top Turq
- 1 ball Color B — 3415 Superior Spruce
- 1 ball Color C — 3446 Regal Teal
- 1 ball Color D — 3413 Black

Needles

- One set of double pointed needles (dpn) each size US 5 and 7 (3.75 and 4.5 mm)

Or size to obtain gauge

- Stitch markers
- Tapestry needle

GAUGE: 22 sts and 22 rnds = 4" in Fair Isle Stockinette Stitch with larger needles. **Take time to save time, check your gauge**

SPECIAL TERMS:

m1: (make 1) Insert LH needle under horizontal strand between st just worked and next st, from the front to the back, knit through the back loop (1 st increased).

PATTERN STITCHES:

1 x 1 Rib: (multiple of 2 sts)

Rnd 1: *K1, p1; rep from * around.

Rnd 2: Knit the knit sts and purl the purl sts as they face you.

Rep Rnd 2 for 1 x 1 Rib.

Backward Cast-on Method: *Wrap yarn around left thumb from front to back and secure in palm with other fingers. Insert needle upwards through strand on thumb.

Slip loop from thumb onto RH needle, pulling yarn to tighten. Rep from * for desired number of sts.

Fair Isle Stockinette Stitch:

(see chart on page 2)

Fair Isle Increase Pattern: (multiple of 12 sts inc'd to 12 sts + 6)

(see chart on page 2)

RIGHT MITT

With smaller dpn and MC, CO 42 sts, divide evenly over 3 dpn. Being careful not to twist sts, join to begin working in-the-rnd. Place marker (pm) for beg-of-rnd (BOR). **Begin 1 x 1 Rib:** work even until pc meas 2" from beg.

Thumb Opening: Work 6 sts in rib, BO 6 sts in rib, cont in rib to end. Next rnd: Work to BO sts, using Backward Loop cast-on method CO 6 sts, cont in rib to end. Cont working in rib until pc meas 4½" from beg. **Inc Rnd:** *Work 6 sts in rib as est, m1; rep from * 5 more times, work to end in rib — 48 sts. **Change to larger needles and begin Fair Isle Stockinette Stitch;** join new colors as required and carry colors not in use up the inside of mitt at BOR; work even for 36 rnds, end Rnd 36 of Fair Isle Stockinette Stitch.

Change to Fair Isle Increase Patt and Inc: Remove BOR marker. Rnd 37: With Color D, m1, pm, work 48 sts following chart, pm, with Color D m1 — 50 sts. Work 4 rnds even in Fair Isle Inc Patt, ending after Rnd 41.

Rnd 42: With Color D m1, work 1 st in patt, slip marker, work to next marker in patt, slip marker, work 1 st in patt, with Color D m1 — 52 sts. Work 4 rnds even in Fair Isle Inc Patt, ending after Rnd 46.

Rnd 47: With Color D m1, work 2 sts in patt, remove marker, work to next marker in patt, remove marker, work 2 sts in patt, with MC m1, replace BOR marker — 54 sts. Work 18 more rnds in Fair Isle Inc Patt, ending after Rnd 65. **Change to MC, smaller Needles and 1 x 1 Rib;** work even for 2". BO all sts in rib.

Rnd 66: With Color D m1, work 1 st in patt, slip marker, work to next marker in patt, slip marker, work 1 st in patt, with Color D m1 — 52 sts. Work 4 rnds even in Fair Isle Inc Patt, ending after Rnd 46.



ABBREVIATIONS

- approx – approximately
- beg – begin(ning)
- BO – Bind Off
- BOR – Beginning Of Rnd
- CO – Cast On
- cont – continue
- dpn – double pointed needle
- est – establish(ed)
- inc('d) – increase(d)
- k – knit
- LH – Left Hand
- m1 – see Special Term
- MC – Main Color
- meas – measures
- p – purl
- patt – pattern
- pc – piece
- pm – place marker
- rep – repeat
- rnd(s) – round(s)
- RS – Right Side
- st(s) – stitch(es)

LEFT MITT

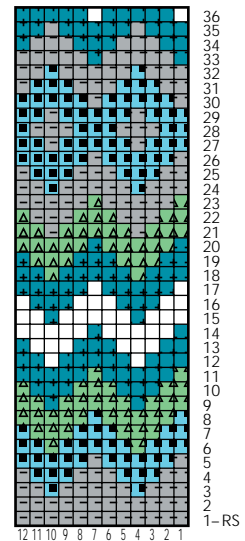
Work as for Right Mitt until pc meas 2" from beg. **Thumb Opening:** Work 32 sts in rib, BO 6 sts, cont in rib to end. Next rnd: Work to BO sts in rib, using Backward Loop cast-on method CO 6 sts, cont in rib to end. Continue as for Right Mitt.

FINISHING

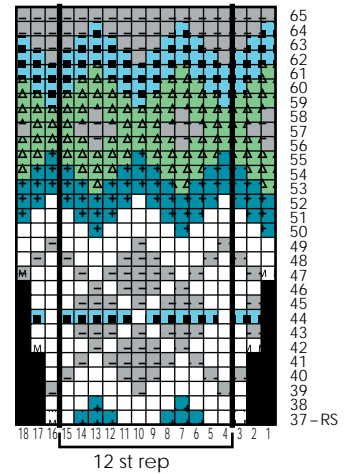
Weave in ends. Wet block mitts.



Fair Isle Chart
(multiple of 12 sts; 36 rnds)



Fair Isle Inc Chart
(multiple of 12 sts inc'd to 12 sts + 6; 29 rnds)



- Work in Fair Isle Stockinette Stitch
- Main Color—3428 Major Grey
 - Color A—3431 Top Turq
 - ▲ Color B—3415 Superior Spruce
 - ⊕ Color C—3446 Regal Teal
 - Color D—3413 Black
 - Ⓜ with Color D, m1 (see Special Terms)
 - Ⓜ with MC, m1 (see Special Terms)
 - No stitch