

# Classic Elite Yarns

## Cotton Bam Boo Nantucket Island Tank



Designed by: Cirilla Rose

**SIZES:** Extra Small (Small, Medium, Large, Extra Large)

**Finished Measurements:** 30½ (32, 34¼, 35½, 37¾)"

### MATERIALS:

**Cotton Bam Boo** by Classic Elite (52% cotton, 48% bamboo; 50 gram ball = approx 130 yards)

- 4 (4, 5, 5, 6) balls 3685 Tiger Lily

### Needles

- One 32" circular size US 6 (4 mm)

### Or size to obtain gauge

- Stitch markers
- Cable needle (cn)
- Large stitch holder or waste yarn

**GAUGE:** 20 sts and 28 rows/rnds = 4" in Stockinette Stitch. **Take time to save time check your gauge.**

### SPECIAL TERMS:

**k2tog:** Knit 2 sts together (1 st decreased).

**ssk: (slip, slip, knit)** Slip 2 sts, 1 at a time, knitwise to the RH needle; return sts to LH needle in turned position and knit them together through the back loops (1 st decreased).

**p2tog:** Purl 2 sts together (1 st decreased).

**C6F:** Slip 4 sts to cn, hold in front; k2; k4 from cn.

**C6B:** Slip 2 sts to cn, hold in back; k4; k2 from cn.

**sk2p:** Slip 1 st purlwise, from the LH needle to the RH needle, k2tog, pass slipped st over knit st created by k2tog (2 sts decreased).

### PATTERN STITCHES:

**Reverse Stockinette Stitch (Rev St st):**

**Circular**—Purl every rnd.

**Straight**—Purl on RS, knit on WS.

**Stockinette Stitch (St st):**

**Circular**—Knit every rnd.

**Straight**—Knit on RS, purl on WS.

**Cable Panel A: (panel of 8 sts)**

(also, see chart on page 2)

Rows 1 and 5: (RS) K6, p2.

Rows 2 and 4: Knit the knit sts and purl the purl sts as they face you.

Row 3: C6F, p2.

Row 6: Rep Row 2.

Rep Rows 1–6 for Cable Panel A.



### ABBREVIATIONS

**approx** – approximately

**beg** – begin(ning)

**BO** – bind off

**BOR** – Beginning-Of-Round

**C6B** – see Special Terms

**C6F** – see Special Terms

**CO** – cast on

**cn** – cable needle

**dec** – decrease

**EOR** – every other row

**k** – knit

**k2tog** – see Special Terms

**LH** – Left Hand

**meas** – measure(s)

**p** – purl

**p2tog** – see Special Terms

**pc** – piece

**pm** – place marker

**rem** – remain(ning)

**rep** – repeat

**Rev St st** – Reverse Stockinette Stitch

**RH** – Right Hand

**rnd(s)** – rounds

**RS** – Right Side

**sk2p** – see Special Terms

**ssk** – see Special Terms

**st(s)** – stitch(es)

**St st** – Stockinette Stitch

**WS** – Wrong Side



2. Work side shaping as follows: \*K6, k2tog, work to 8 sts before next marker, ssk, k6, slip marker; rep from \* 1 time.
3. Work Back armhole shaping as follows: (RS) P1, p2tog, work to last 3 sts, p2tog, p1.
4. Work strap shaping as follows: (RS) Work 8 sts as est, k1, ssk, work to 11 sts before neck edge, k2tog, k1, work 8 sts as est; on other side: work 8 sts as est, k1, ssk, work to 11 sts before armhole edge, k2tog, k1, work 8 sts as est.

### BODY

CO 186 (194, 206, 214, 226) sts. Join to beg working in-the-rnd being careful not to twist sts. Place marker (pm) for beg-of-rnd (BOR). Knit 1 rnd. **Change to Rev St st**; work even for 3 rnds. **Change to St st**; work even until pc meas 4 (4, 4½, 4½, 5)" from beg; on last rnd, pm for side as follows: Work 93 (97, 103, 107, 113) sts, pm, work to end. **Shape Sides:** Dec 4 sts this rnd (see Note 2), then every 22<sup>nd</sup> rnd 3 (3, 2, 2, 2) times, then every 24<sup>th</sup> rnd 0 (0, 1, 1, 1) times—170 (178, 190, 198, 210) sts rem. Work even until pc meas 14½ (14½, 15¼, 15¼, 15¾)" from beg. **Divide:** Work to side marker, place 85 (89, 95, 99, 105) sts just worked onto holder or waste yarn for Front—85 (89, 95, 99, 105) sts rem for Back.

### BACK

Work back and forth in rows. **Dec Row:** (RS) K2 (1, 2, 1, 2), k2tog, \*k3, k2tog; rep from \* to last st, k1—68 (71, 76, 79, 84) sts rem. **Change to Rev St st**; (WS) work 1 row even. **Shape Armholes:** (RS) Dec 1 st each side this row (see Note 3), then EOR 1 time—64 (67, 72, 75, 80) sts rem, end RS row. (WS) BO all sts knitwise.

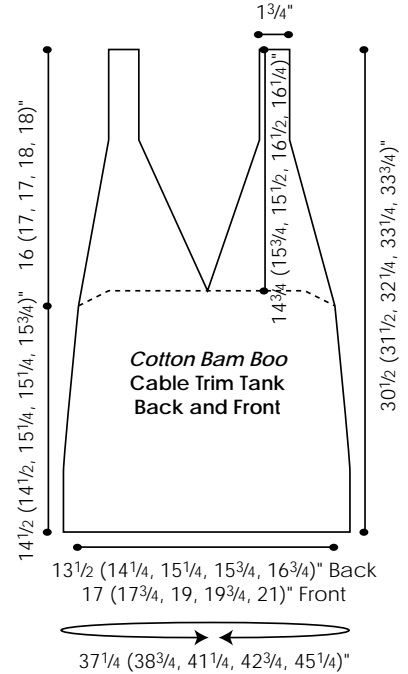
### FRONT

Join yarn and slip 85 (89, 95, 99, 105) sts from holder to working needle preparing to work a RS row. Work back and forth in rows. **Shape Bust with short rows:** (RS) Work to last 2 sts, wrap and turn; rep for WS. \*(RS) Work to 2 sts before wrapped st, wrap and turn; rep for WS; rep from \* 2 (2, 3, 3, 4) times. (RS) Work to end hiding wraps as they appear; rep for WS. Pm each side of center st. **Est Cable and Divide for Neck:** (RS) Work 8 sts in Cable Panel A, work to 8 sts before marker, work 8 sts in Cable Panel B, remove marker, join second ball of yarn and BO center st, remove marker, work 8 sts in Cable Panel A, work to last 8 sts, work 8 sts in Cable Panel B—42 (44, 47, 49, 52) sts rem each side. Working both sides at the same time, work 1 row even as est. **Shape Straps:** (RS) Dec 1 st at each neck and armhole edge this row (see Note 4), then every 6<sup>th</sup> row 10 (11, 12, 13, 15) times—20 (20, 21, 21, 20) sts rem each side. (WS) Work 5 rows even, end WS row. **Dec Row:** (RS) \*Work 8 sts as est, k2tog, k0 (0, 1, 1, 0), ssk, work 8 sts as est; rep from \* for other side—18 (18, 19, 19, 18) sts rem each side. (WS) Work 5 rows even, end WS row. **Dec Row:** (RS) \*Work 8 sts as est, ssk (ssk, sk2p, sk2p, ssk), work 8 sts as est; rep

from \* for other side—17 sts rem each side. Work even as est working the center st in Rev St st until armholes meas approx 16 (17, 17, 18, 18)" from beg of shaping, end WS Row 6 of Cable Panels. (RS) BO all sts.

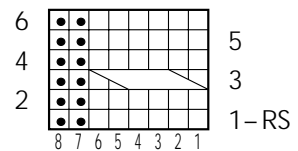
### FINISHING

Block pc to measurements. Sew straps to Back BO edge with outer edge of strap beg at armhole edge.



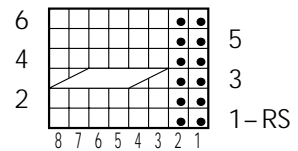
### Cable Panel A Chart

(multiple of 8 sts; 6 row rep)



### Cable Panel A Chart

(multiple of 8 sts; 6 row rep)



- Knit on RS, purl on WS
- Purl on RS, knit on WS
- Slip 4 sts to cn, hold in front; k2; k4 from cn
- Slip 2 sts to cn, hold in back; k4; k2 from cn