

# Moorland Berries & Twigs Cap

designed by Tonia Barry

# Classic Elite Yarns

## The Yarn

### Moorland

42% Fine Merino, 23% Baby Alpaca, 19% Mohair, 16% Acrylic

A loosely spun single ply yarn, Moorland is light and lofty. The soft and fuzzy blend of fibers - fine merino, baby alpaca and mohair—each take color differently when dyed resulting in soft and earthy heathered colors that blend beautifully in stripes or colorwork.

## The Pattern

**Skill Level:** Intermediate

**SIZE:** One size; to fit an average adult.

**Finished Measurements:** 19" brim circumference, unstretched

### YARN:

**Moorland** by **Classic Elite** (42% fine merino, 23% baby alpaca, 19% mohair, 16% acrylic; 50 gram ball = approx 147 yards)

- 1 ball Color A - 2576 Bark
- 1 ball Color B - 2585 Persimmon

### NEEDLES AND OTHER MATERIALS:

Circular knitting needle (16") in sizes US 4 and 6 (3.5 mm and 4 mm) and a set of double pointed needles (dpns) in size US 6 (4 mm) **or size to obtain gauge.**

Cable needle (cn)

Three stitch markers (one of contrasting color to mark beg-of-rnd)

Tapstry needle

**GAUGE:** 21 sts and 32 rows = 4" in Stockinette Stitch with larger needle.

**Take time to save time, check your gauge.**



### ABBREVIATIONS:

**approx:** approximately  
**beg:** begin(ing)  
**CO:** cast on  
**cont:** continue  
**est:** establish(ed)

**LH:** left hand  
**k:** knit  
**meas:** measure(s)  
**p:** purl  
**patt:** pattern  
**pc:** piece

**rem:** remain(ing)  
**rep:** repeat  
**RH:** right hand  
**rnd:** round  
**st(s):** stitch(es)

**SPECIAL TERMS:**

**C10F:** Slip 5 sts to cn, hold in front, k5; k5 from cn.

**k2tog:** Knit 2 sts together (1 st decreased).

**MB: (make bobble)** [K1, yo, k1, yo, k1] into the next st, with yarn in back (wyib) slip these 5 sts back to LH needle, k5; wyib slip these 5 sts back to LH needle, ssk, k1, k2tog; wyib slip these 3 sts back to LH needle, sk2p – 1 st rem.

**sk2p:** Slip 1 st knitwise, from the LH needle to the RH needle, k2tog, pass slipped st over knit st created by k2tog (2 sts decreased).

**ssk: (slip, slip, knit)** Slip 2 sts, 1 at a time, knitwise to the RH needle; return sts to LH needle in turned position and knit them together through the back loops (1 st decreased).

**yo:** Yarn over (1 st increased).

**PATTERN STITCHES:****Circular Garter Stitch (Gtr St):**

Rnd 1: Purl.

Rnd 2: Knit.

Rep rnds 1 and 2 for Gtr St.

**Circular Stockinette Stitch (St st):**

Knit all sts, every rnd.

**Cable Bobble Panel: (panel of 12 sts)**

(also, see chart)

Rnds 1, 2, 3, 4, 6, 8, 9 and 10: P1, k10, p1.

Rnd 5: P1, k6, MB, k3, p1.

Rnd 7: P1, k5, MB, k1, MB, k2, p1.

Rnd 11: P1, C10F, p1.

Rnd 12: P1, k10, p1.

Rep rnds 1 – 12 for Cable Bobble Panel.

**NOTE:** Work jogless stripes as follows: With new color, work 1 rnd. Next rnd: At the beg of the rnd, pick up the stitch below the first stitch (the old color) and place on the LH needle; with the new color, knit the picked up st and first st together, work to end. Rep this step every time color is changed.

**HAT**

With Color A and smaller circular needle, loosely CO 100 sts. Place marker (pm) for beg-of-rnd and join for working in-the-rnd, being careful not to twist sts. Work in Gtr St until pc meas 2" from beg. **Change to larger circular needle and Color B; Est Patt:** Work 50 sts in St st, pm, work 12 sts in Cable Bobble Panel, pm, work to end in St st. Cont as est for 11 more rnds, end after Rnd 12 of Cable Bobble Panel. **Next rnd:** With Color A, work 50 sts as est, loosely carrying Color B behind work, with Color B work 12 sts in Cable Bobble Panel, loosely carrying Color A behind work, leave Color B at the end of panel, with Color A, work to end as est. **\*Next rnd:** With Color A, work as est to Cable Bobble Panel, loosely bring Color B from behind work to the RS at the beg of the Cable Bobble Panel, work 6 sts of Cable Bobble Panel then slip RH needle under the loose strand of Color B and work next st (this will eliminate long floats), work to end of Cable Bobble Panel loosely carrying Color A behind work, leave Color B at end of panel, with Color A work to end of rnd as est. Rep from \* until Rnd 12 of Cable Bobble Panel is complete, carrying Color B to the end of rnd 12. **Next rnd, change to Color B:** Work 50 sts as est, work 12 sts in Cable Bobble Panel, work to end as est. Cont as est for 11 more rnds, end after Rnd 12 of Cable Bobble Panel (pc meas approx 6½" from beg). Break Color B. **Change to Color A;** work 1 rnd in St st.

**Shape Crown, changing to dpns when necessary:**

Dec Rnd 1: \* K2tog, k8; rep from \* around – 90 sts rem.

Dec Rnd 2: \* K2tog, k7; rep from \* around – 80 sts rem.

Dec Rnd 3: \* K2tog, k6; rep from \* around – 70 sts rem.

Dec Rnd 4: \* K2tog, k5; rep from \* around – 60 sts rem.

Dec Rnd 5: \* K2tog, k4; rep from \* around – 50 sts rem.

Dec Rnd 6: \* K2tog, k3; rep from \* around – 40 sts rem.

Dec Rnd 7: \* K2tog, k2; rep from \* around – 30 sts rem.

Dec Rnd 8: \* K2tog, k1; rep from \* around – 20 sts rem.

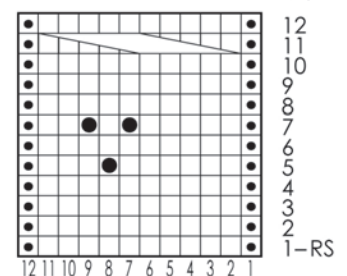
Dec Rnd 9: \* K2tog; rep from \* around – 10 sts rem.

**FINISHING**

Break yarn leaving approx 8" tail of yarn. Thread tail onto tapestry needle and thread through rem sts. Pull tight to close top of hat and fasten off. Lightly block pc to measurement.

**Cable Bobble Panel**

anel of 12 sts; 12 rnd rep)



© 2010 Tonia Barry and Classic Elite Yarns  
122 Western Avenue • Lowell, MA 01851

Moorland Berries & Twigs Cap  
page 2 of 2

This pattern is specifically for private use only. All commercial uses involving reproduction of this pattern or duplication of this garment is prohibited unless specifically licensed in writing by copyright owner.

For more information about this design, visit [www.classiceliteyarns.com/WebLetter/164/Issue164.php](http://www.classiceliteyarns.com/WebLetter/164/Issue164.php)