

Liberty Wool Hats

designed by
Susan Mills

Classic Elite Yarns

The Yarn

Liberty Wool

100% washable wool

A super-soft, washable wool with 12 solid colors and four prints, Liberty Wool is perfect for easy-care projects. At 5 sts per inch, this yarn knits up quickly and has a balanced twist that makes all stitch combinations pop.

Liberty Wool's four prints' names truly represent their colors--Sunset, Blue Twilight, Sunrise and Cloudy Dawn. Liberty Wool is also available in a range of solid colors, perfect for when you want your stitches to be the focus of your project!

The Pattern

Skill Level: Easy

SIZES

- **Striped:** XS (S, M, L). Shown in M.
- **Fair Isle:** XS/S (M, L/XL). Shown in M.

Finished Measurements:

- **Striped:** 16 (17½, 19¼, 20¾)" brim circumference, unstretched
- **Fair Isle:** 16 (19¼, 22½)" brim circumference, unstretched

MATERIALS:

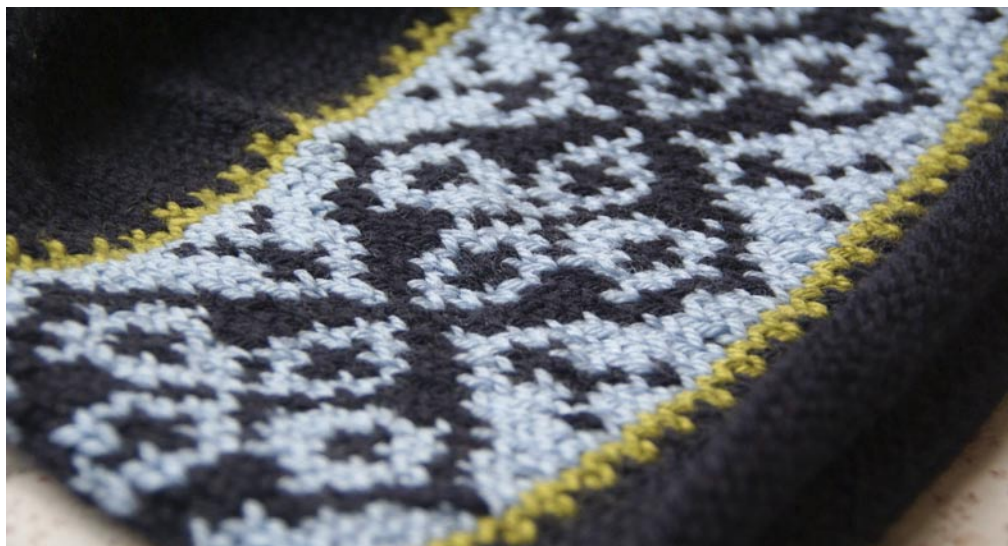
Liberty Wool by **Classic Elite** (100% washable wool; 50 gram ball = approx 122 yards)

Striped Hat:

- 1 ball each:
 - MC – 7855 Raspberry Red
 - A – 7810 Dark Navy
 - B – 7815 Bright Olive
 - C – 7847 Sky
 - D – 7857 Bright Blue

Fair Isle Hat:

- 1 ball each:
 - MC – 7810 Dark Navy
 - A – 7815 Bright Olive
 - B – 7847 Sky



Needles:

- 16" circular size US 7 (4.5 mm)
- Set of double pointed needles (dpns) size US 7 (4.5 mm)

Or size to obtain gauge

- Stitch marker

GAUGE: 20 sts and 28 rows = 4" in Circular Stockinette St (St st). **Take time to save time, check your gauge.**

ABBREVIATIONS

approx: approximately
beg: begin(ning)
CO: cast on
dec('d): decrease(d)
dpn(s): double pointed needle(s)
k: knit
meas: measures
rem: remain
rep: repeat
rnd(s): round(s)
st(s): stitch(es)

SPECIAL TERMS

k2tog: Knit 2 sts together (1 st dec'd).

PATTERN STITCHES

Circular Stockinette Stitch: (St st)
 Knit all sts, every rnd.

Easy Striped Hat

With circular needle and MC, CO 80 (88, 96, 104) sts. Join to beg working in-the-rnd, being careful not to twist sts. Place marker for beg-of-rnd.

Work in St st in stripe pattern as follows:

MC for 6 (8, 10, 10) rnds, A for 6 (8, 8, 8) rnds, B for 6 (8, 10, 10) rnds, C for 6 rnds, MC for 6 rnds, then D for 6 (6, 8, 8) rnds - 36 (42, 48, 48) rnds complete.

Work in stripe pattern as follows AND AT THE SAME TIME, shape crown
(changing to dpns when necessary):

Stripe pattern: B for 4 (5, 5, 5) rnds, A for 5 (5, 6, 6) rnds. MC for 6 (6, 6, 7) rnds.
 Dec Rnd 1: *K8 (9, 10, 11), k2tog; rep from * - 72 (80, 88, 96) sts rem. Work 1 rnd even.
 Dec Rnd 2: *K7 (8, 9, 10), k2tog; rep from * - 64 (72, 80, 88) sts rem. Work 1 rnd even.
 Dec Rnd 3: *K6 (7, 8, 9), k2tog; rep from * - 56 (64, 72, 80) sts rem. Work 1 rnd even.
 Dec Rnd 4: *K5 (6, 7, 8), k2tog; rep from * - 48 (56, 64, 72) sts rem. Work 1 rnd even.
 Dec Rnd 5: *K4 (5, 6, 7), k2tog; rep from * - 40 (48, 56, 64) sts rem. Work 1 rnd even.
 Dec Rnd 6: *K3 (4, 5, 6), k2tog; rep from * - 32 (40, 48, 56) sts rem. Work 1 rnd even.
 Dec Rnd 7: *K2 (3, 4, 5), k2tog; rep from * - 24 (32, 40, 48) sts rem.
 Dec Rnd 8: *K1 (2, 3, 4), k2tog; rep from * - 16 (24, 32, 40) sts rem.

Sizes S (M, L) ONLY: *K1 (2, 3), k2tog; rep from * - 16 (24, 32) sts

Sizes M (L) ONLY: *K1 (2), k2tog; rep from * - 16 (24) sts

Sizes L ONLY: Next rnd: *K1, k2tog; rep from * - 16 sts

All sizes: 16 sts rem.

Final Dec Rnd: *K2tog; rep from * - 8 sts rem.

FINISHING

Break yarn leaving a 6" tail. Thread tail onto tapestry needle and pull through all sts. Pull up tightly and fasten off. Weave in ends. Block to measurement.



ABBREVIATIONS

approx: approximately
beg: begin(ning)
CO: cast on
dec('d): decrease(d)
dpn(s): double pointed needle(s)
k: knit
meas: measures
rem: remain
rep: repeat
rnd(s): round(s)
st(s): stitch(es)

SPECIAL TERMS

k2tog: Knit 2 sts together (1 st dec'd).

PATTERN STITCHES

Circular Stockinette Stitch: (St st)
 Knit all sts, every rnd.



Fair Isle Hat

Classic Elite Yarns

With circular needle and MC, CO 80 (96, 112) sts. Join to beg working in-the-rnd, being careful not to twist sts. Place marker for beg-of-rnd. Work even in St st for 6 (12, 18) rnds. Work in Fair Isle Pattern (see chart) for 27 rnds. Work even in MC for 3 (7, 11) rnds.

Shape Crown, changing to dpns when necessary:

Dec Rnd 1: *K8 (10, 12), k2tog; rep from * – 72 (88, 104) sts rem. Work 1 rnd even.
 Dec Rnd 2: *K7 (9, 11) k2tog; rep from * – 64 (80, 96) sts rem. Work 1 rnd even.
 Dec Rnd 3: *K6 (8, 10) k2tog; rep from * – 56 (72, 88) sts rem. Work 1 rnd even.
 Dec Rnd 4: *K5 (7, 9) k2tog; rep from * – 48 (64, 80) sts rem. Work 1 rnd even.
 Dec Rnd 5: *K4 (6, 8) k2tog; rep from * – 40 (56, 72) sts rem. Work 1 rnd even.
 Dec Rnd 6: *K3 (5, 7) k2tog; rep from * – 32 (48, 64) sts rem. Work 1 rnd even.
 Dec Rnd 7: *K2 (4, 6) k2tog; rep from * – 24 (40, 56) sts rem.
 Dec Rnd 8: *K1 (3, 5) k2tog; rep from * – 16 (32, 48) sts rem.

Sizes M (XL) ONLY: *K2 (4), k2tog; rep from * – 24 (40) sts rem.

Sizes XL ONLY: *K3, k2tog; rep from * – 32 sts rem.

Sizes M (XL) ONLY: *K2tog; rep from * – 12 (16) sts rem.

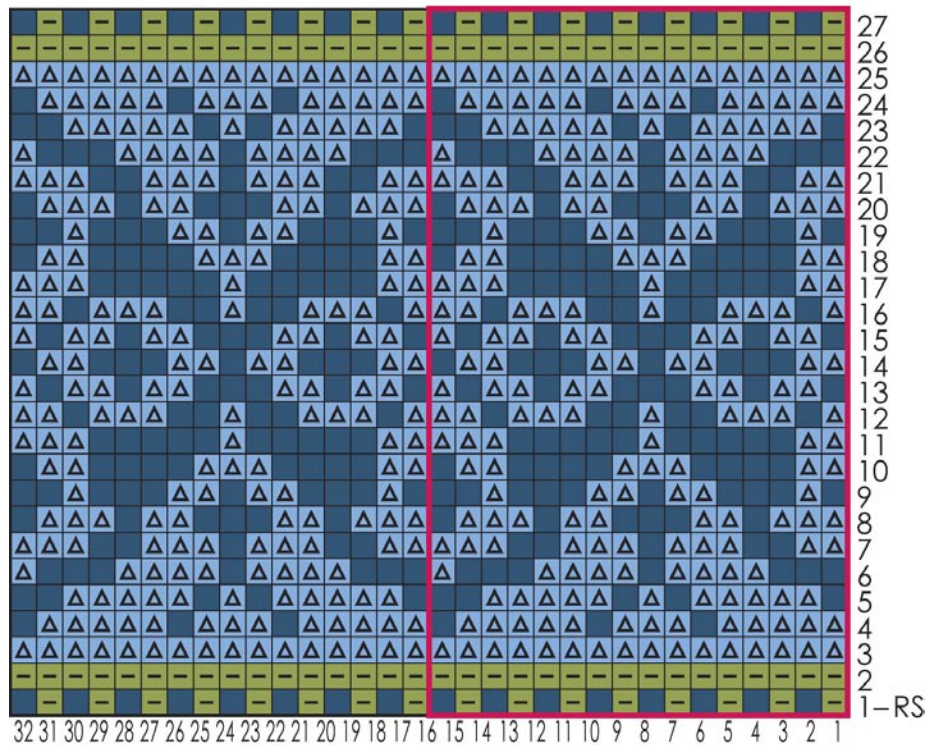
All sizes: 16 (12, 16) sts rem.

Final Dec Rnd: *K2tog; rep from * – 8 (6, 8) sts rem.

FINISHING

Break yarn leaving a 6" tail. Thread tail onto tapestry needle and pull through all sts. Pull up tightly and fasten off. Weave in ends. Block to measurement.

Fair Isle Chart (16 st repeat; 27 rnds)



Work in Fair Isle St st

- MC—7810 Dark Navy
- Color A—7815 Bright Olive
- ▲ Color B—7847 Sky
- Repeat