

Classic Elite Yarns

LUXURY FIBER DIVISION

“LAVISH” FLAP HAT AND WRISTLETS



Designed by: Joëlle Meier Rioux

HAT SIZES: Small (Medium, Large)

Finished Measurements: 19 (21, 23)" circumference.

WRISTLET SIZES: One size; to fit a woman's medium size hand

Finished Measurements:

7" long, 7½" around hand

MATERIALS:

Lavish by **Classic Elite** (100% cashmere; 50 gram hank = approx 125 yards)

- 2 hanks 10079 Orange

Needles

- One pair size US 6 (4 mm)

Or size to obtain gauge

- One set double pointed needles (dpn) size US 6 (4 mm)
- Cable needle (cn)
- Stitch markers
- Stitch holders

GAUGE: 17 sts and 29 rows = 4" in Stockinette Stitch (St st); 11 sts = 1¾" in Cable Panel; 19 sts and 41 rows = 4" in Garter Stitch (Gtr st). **Take time to save time, check your gauge.**

SPECIAL TERMS:

C4B: Slip 3 sts to cn, hold in back, k1, k3 from cn.

C4F: Slip 1 st to cn, hold in front, k3, k1 from cn.

C3B: Slip 2 sts to cn, hold in back, k1, k2 from cn.

C3F: Slip 1 st to cn, hold in front, k2, k1 from cn.

C2B: Slip 1 st to cn, hold in back, k1, k1 from cn.

C2F: Slip 1 st to cn, hold in front, k1, k1 from cn.

k2tog: Knit 2 sts together (1 st decreased).

ssk (slip, slip, knit) Slip 2 sts, 1 at a time, knitwise to the RH needle; return sts to LH needle in turned position and knit them together through the back loops (1 st decreased).

s2kp: Slip 2 sts knitwise to the RH needle, k1, pass 2 slipped sts over knit st (2 sts decreased).

p3tog: Purl 3 sts together (2 sts decreased).

k3tog: Knit 3 sts together (2 sts decreased).

PATTERN STITCHES:

Garter Stitch (Gtr st): Knit every row.

Stockinette Stitch (St st): Knit on RS, purl on WS.

Cable Panel: (panel of 11 sts)

(also, see chart on page 2)

Row 1: (RS) P1, k4, p1, k4, p1.

Row 2: K1, p3, slip 1 st purlwise wyif, k1, slip 1 st purlwise wyif, p3, k1.



ABBREVIATIONS

approx—approximately

beg—begin(ning)

BO—bind off

C2B—see Special Terms

C2F—see Special Terms

C3B—see Special Terms

C3F—see Special Terms

C4B—see Special Terms

C4F—see Special Terms

cn—cable needle

CO—cast on

dec—decrease

dpn—double pointed needle(s)

EOR—every other row

est—establish(ed)

Gtr st—garter stitch

k—knit

k2tog—see Special Terms

k3tog—see Special Terms

LH—left hand

meas—measures

p—purl

p3tog—see Special Terms

pm—place marker

rem—remain(ning)

rep—repeat

RH—right hand

RS—right side

s2kp—see Special Terms

ssk—see Special Terms

st(s)—stitch(es)

St st—Stockinette Stitch

WS—wrong side

wyif—with yarn in front

page 1 of 2

© 2008 *Classic Elite Yarns* • Lowell, MA 01851

This pattern is specifically for private use only. All commercial uses involving reproduction of this pattern or duplication of this garment are prohibited unless specifically licensed in writing by copyright owner.

View more information about this design on our website: www.classiceliteyarns.com/WebLetter/22/Issue22.php

Row 3: P1, C4B, p1, C4F, p1.
 Row 4: K1, p4, k1, p4, k1.
 Rep Rows 1–4 for Cable Panel.

Cable Decrease Panel: (panel of 11 sts, dec'd to 3 sts)

(also, see chart)
 Row 1: (RS) P1, k3, p3tog, k3, p1—9 sts.
 Row 2: K1, p2, slip 1 st purlwise wyif, k1, slip 1 st purlwise wyif, p2, k1.
 Row 3: P1, C3B, p1, C3F, p1.
 Row 4: K1, p3, k1, p3, k1.
 Row 5: P1, k2, s2kp, k2, p1—7 sts.
 Row 6: K1, p1, slip 1 st purlwise wyif, p1, slip 1 st purlwise wyif, p1, k1.
 Row 7: P1, C2B, k1, C2F, p1.
 Row 8: K1, p5, k1.
 Row 9: P1, k1, s2kp, k1, p1—5 sts.
 Row 10: K1, p3, k1.
 Row 11: P1, s2kp, p1—3 sts.
 Row 12: K1, p1, k1.
 Work Rows 1–12 for Cable Dec Panel.

2 x 2 Rib: (multiple of 4 sts)

Row 1: (RS) *K2, p2; rep from * across.
 Row 2: Knit the knit sts and purl the purl sts as they face you.
 Rep Row 2 for 2 x 2 Rib.

HAT NOTE: Hat is worked back and forth on straight needles, with a seam in the back. Flaps are added after seaming.

HAT

With straight needles, CO 90 (100, 110) sts.
(RS) Begin Gtr st; work even until piece meas 1½ (2, 2)'' from beg, end WS row, dec 9 sts evenly across last row—81 (91, 101) sts rem.
Est Cable Panel: (RS) Work St st across 12 (13, 15) sts, *place marker (pm), beg Row 1 of Cable Panel, work across 11 sts, pm, work St st across 12 (16, 19) sts; rep from * 1 time, pm, beg Row 1 of Cable Panel, work across 11 sts, pm, work St st across 12 (13, 15) sts. Work even as est until piece meas approx 5½ (6, 6)'' from beg, end WS Row 4 of Cable Panel. **Est Cable Dec Panel and Cable Dec Row:** (RS) *Ssk, work to 2 sts before marker, k2tog, beg Row 1 of Cable Dec Panel, work to next marker; rep from * 2 times, ssk, work to last 2 sts, k2tog—67 (77, 87) sts rem. Continue working Cable Dec Panel, rep Cable Dec Row every 4 rows 1 time, then EOR 2 times—25 (35, 45) sts rem.
Dec Row: (RS) *Ssk, work to 2 sts before marker, k2tog, p1, k1, p1; rep from * 2 times, ssk, work to last 2 sts, k2tog—17 (27, 37) sts rem. Work 1 row. **Sizes (M, L) only:** Work to 2 sts before marker, k2tog, p1, k1, p1, *ssk, work to 2 sts before marker, k2tog, p1, k1, p1; rep from * 1 time, ssk, work to end—(21, 31) sts rem. Work 1 row. **Size L only:** Rep previous 2 rows 1 time, end WS row—(25) sts rem. **All Sizes:** Remove markers. **Final Dec Row:** (RS) K2tog to last st, k1—9 (11, 13) sts rem. Fasten off.

EAR FLAPS

Pm on CO row of Hat, 0 (2, 2) sts out from each side Cable Panel. With RS facing, pick up and knit 11 (15, 15) sts between markers. **(WS) Begin Gtr st;** work 3 (5, 5) rows even, end WS row. **Shape Flap:** (RS) Beg this row, dec 1 st each side every 4 rows 3 (5, 5) times as follows: (RS) K1, ssk, work across to last 3 sts, k2tog, k1—5 sts rem. Work 1 row even. (RS) K1, k3tog, k1—3 sts rem. (WS) K3tog. Fasten off.

TIES (make 2)

Twist two 40'' strands of yarn tightly together, fold in half and let it twist itself to form a 4-ply twisted cord. Tie a knot at loose end.

FINISHING

Neatly fasten the folded end of each cord to tip of each flap. Sew up hat seam.

WRISTLET NOTES:

1. Set aside 2 lengths of yarn, 45'' each.
2. Wristlets are worked from the fingers to the wrist, back and forth on straight needles with a seam on the side.
3. Wind your yarn so that both tail ends are available; one Wristlet is worked from one end, and the other is worked from the other end. Rem yarn is then divided in half and both wristlets are worked until there is only enough yarn to BO and sew the seam.

RIGHT WRISTLET

With straight needles, CO 35 sts. **(RS) Begin Gtr st;** work even until piece meas ¾'' from beg, end WS row. **Est Cable Panel:** (RS) Work St st across 15 sts, beg Row 1 of Cable Panel, work across 11 sts, work St st across 9 sts. Work even as est until piece meas 2½'' from beg, end RS row. **Shape Thumb:** (WS) Work 22 sts as est, place next 5 sts on holder, CO 11 sts, work to end as est—41 sts. Work 4 rows even, end WS row. (RS) Work across 12 sts, s2kp, work to

end—39 sts rem. Work 3 rows even. (RS) Work across 11 sts, s2kp, work to end—37 sts rem. Work 3 rows even. **Est 2 x 2 Rib:** (RS) K1, [k2, p2] 2 times, k1, s2kp, p2, k2, work across 11 sts as est, [k2, p2] 2 times, k1—35 sts rem. Work even until piece meas approx 2'' from beg of 2 x 2 Rib, end WS Row 4 of Cable Panel, do not break yarn. **Thumb Trim:** With RS facing, 3 dpn's and length of yarn previously set aside, slip 5 sts from holder to needle; pick up and knit 11 sts from CO edge—16 sts; join to work in-the-rnd. (RS) BO all sts purlwise.

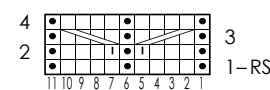
LEFT WRISTLET

With opposite end of yarn ball, CO 35 sts. **(RS) Begin Gtr st;** work even until piece meas ¾'' from beg, end WS row. **Est Cable Panel:** (RS) Work St st across 9 sts, beg Row 1 of Cable Panel, work across 11 sts, work St st across 15 sts. Work even until piece meas 2½'' from beg, end RS row. **Shape Thumb:** (WS) Work 8 sts as est, place next 5 sts on holder, CO 11 sts, work to end as est—41 sts. Work 4 rows even. (RS) Work across 26 sts, s2kp, work to end—39 sts rem. Work 3 rows even. (RS) Work across 25 sts, s2kp, work to end—37 sts rem. Work 3 rows even. **Est 2 x 2 Rib:** (RS) K1, [p2, k2] 2 times, work across 11 sts as est, k2, p2, s2kp, k1, [p2, k2] 2 times, k1—35 sts rem. Work even until piece meas approx 2'' from beg of 2 x 2 Rib, end WS Row 4 of Cable Panel, do not break yarn. **Thumb Trim:** With RS facing, 3 dpn's and length of yarn previously set aside, pick up and knit 11 sts from CO edge; slip 5 sts from holder to needle—16 sts; join to work in-the-rnd. (RS) BO all sts purlwise.

FINISHING

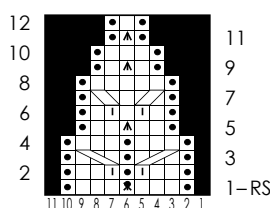
Divide the rem yarn evenly in 2 and break at the center. Work even until there is enough yarn rem to BO and sew seam, end WS Row 4 of Cable Panel. BO all sts in patt. Finish second Wristlet to match first. Sew seam.

Cable Panel Chart
(panel of 11 sts; 4 row rep)



- Knit on RS, purl on WS
- No stitch
- ◻ Purl on RS, knit on WS
- ▣ p3tog (see Special Terms)
- ◻ Slip 1 st purlwise wyif
- ▣ s2kp (see Special Terms)

Cable Decrease Panel Chart
(panel of 11 sts dec'd to 3 sts; 12 rows)



- ▣ Slip 3 sts to cn, hold in back; k1; k3 from cn
- ▣ Slip 1 st to cn, hold in front; k3; k1 from cn
- ▣ Slip 2 sts to cn, hold in back, k1, k2 from cn
- ▣ Slip 1 st to cn, hold in front; k2; k1 from cn
- ▣ Slip 1 st to cn, hold in back; k1; k1 from cn
- ▣ Slip 1 st to cn, hold in front; k1; k1 from cn