

Classic Elite Yarns

La Gran Felted Oval Bag



SIZE: One size

Finished Measurements: 14¾" wide x 20" tall before felting; approx 14¾" wide x 10" tall after felting.

MATERIALS:

La Gran by **Classic Elite** (76½% mohair, 17½% wool, 6% nylon; 42 gram ball = approx 90 yards)

- 1 ball Color A—6552 Eggplant
- 1 ball Color B—6585 Pumpkin
- 1 ball Color C—6525 Sunflower
- 1 ball Color D—63534 Sugar Plum
- 2 balls Color E—6575 Pebble

Needles

- One pair each size US 8 and 9 (5 and 5.5 mm)

Or size to obtain gauge

GAUGE: 16 sts and 20 rows = 4" in Stockinette Stitch (St st) using larger needles. **Take time to save time, check your gauge.**

PATTERN STITCHES

Stockinette Stitch (St st): Knit on RS, purl on WS.

Garter Stitch (Gtr St): Knit all sts every row.

Oval Pattern: (59 st panel)

See Chart on page 2.

NOTES:

1. The oval motifs are worked in St st Intarsia technique.
2. If desired, work the 5 sts at the center of each oval in the surrounding color, and embroider the center sts in duplicate st before felting.

BAG (make 2)

Using Color A and smaller needles, CO 59 sts. **(RS) Begin Gtr St:** Work 2 rows. **Change to Color B;** work 2 rows. **Change to Color C;** work 2 rows. **Change to Color D;** work 2 rows. **Change to Color E;** work 2 rows. **Change to larger needles, St st and Begin Oval Pattern:** (RS) Beg Row 1 of Oval Pattern. Work even until Oval Pattern is complete. **Change to Color E;** work even for 3", end WS row. (RS) BO all sts.

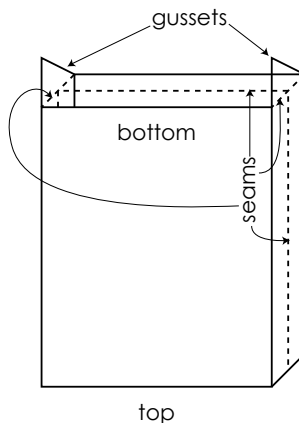
FINISHING

Using Color E, sew pieces together along sides and bottom. **Shape Gusset:** With bag inside out, flatten bag bottom so that bottom seam is centered and faces up. Fold

side seam to touch bottom seam and make a seam across fold about 2" in from each corner. See diagram below. **Handles (make 2):** Using Color E and larger needles, CO 6 sts. **(RS) Begin St st;** work 14 rows of each color in the following sequence: *E, B, A, C, E, B, D, A; rep from * until handle meas 34" from beg. BO all sts. Seam long edges of handle to form a tube. Sew handles to top edge on the inside of bag so that ends align with edges of center square motif.

Felting Instructions

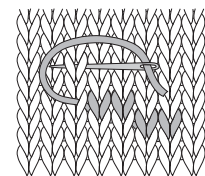
NOTE: We recommend you test felt your yarn. Knit a swatch using the same yarn in the same colors shown and test felt it before proceeding with your project. Classic Elite cannot predict the effects of all washing machines, detergents and local water conditions. You are felting at your own risk. Felting is irreversible. Please proceed cautiously with the felting process. It is easy to felt "just a little more", but impossible to undo the effects of over-felting. Place the piece in a pillowcase or pillow cover and either zipper it shut or close it with a heavy duty elastic—this will help to prevent clogging your machine with fibers coming off in the washing process. Place the pillowcase in the washer and add a very small amount of detergent (¼ cap). Set the washer on hot water/cold rinse cycle, minimum size load, and wash garment. Check the felting process every 1–2 minutes depending on your machine, detergent, and local water conditions. If using spin cycle to remove excess water, set on lowest setting—folds caused by the spin cycle are hard to remove. After the piece has finished washing, place in dryer on high heat to finish felting. Check frequently to obtain desired amount of felting.



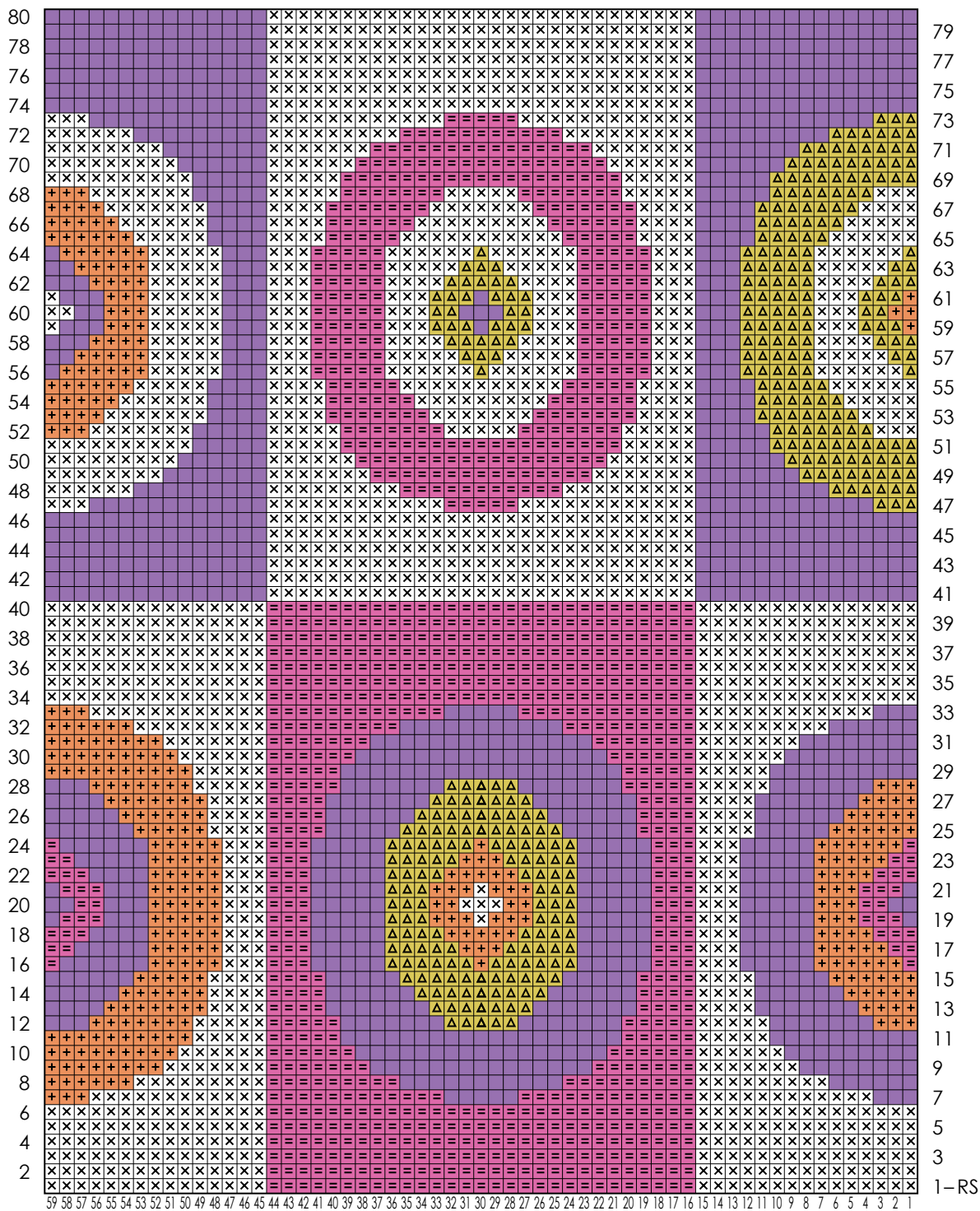
ABBREVIATIONS

- approx**—approximately
- beg**—begin(ning)
- BO**—bind off
- CO**—cast on
- Gtr st**—Garter Stitch
- rep**—repeat
- RS**—right side
- st(s)**—stitch(es)
- St st**—Stockinette Stitch
- WS**—wrong side

Duplicate Stitch



Oval Chart (59 sts; 80 rows)



- Work in Intarsia St st
- Color A— 6552 Eggplant
 - Color B— 6585 Pumpkin
 - Color C — 6525 Sunflower
 - Color D— 63534 Sugar Plum
 - Color E— 6575 Pebble