

Classic Elite Yarns

La Gran Fair Isle Pillow



Designed from a vintage sweater by:
Joëlle Meier Rioux

SIZES: One Size

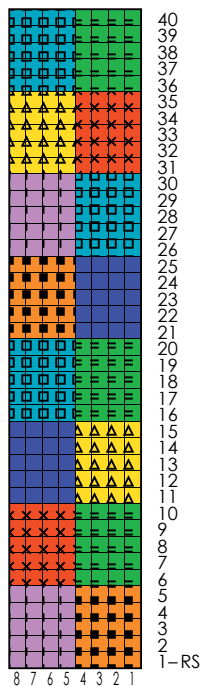
Finished Measurements: 24" wide x 26" long.
Knitted piece will be stretched to fit into 26" square pillow form

MATERIALS:

La Gran Mohair by **Classic Elite** (76½% mohair, 17½% wool, 6% nylon; 42 gram ball = approx 90 yards)

- 2 balls Color A—6589 Crepe Myrtle
- 2 balls Color B—6585 Pumpkin
- 2 balls Color C—6579 European Plum
- 2 balls Color D—6525 Sunflower
- 2 balls Color E—6572 Underappreciated Green
- 2 balls Color F—6527 Chinese Red
- 2 balls Color G—6562 Blue Spruce

Multi Color Check Chart
(multiple of 8 sts; 40 row rep)



- Color A—6589 Crepe Myrtle
- Color B—6585 Pumpkin
- Color C—6579 European Plum
- Color D—6525 Sunflower
- Color E—6572 Underappreciated Green
- Color F—6527 Chinese Red
- Color G—6562 Blue Spruce



Needles

- One 32" circular size US 10 (6 mm)
- Or size to obtain gauge**
- One stuffed pillow form 26" square
- Stitch marker

GAUGE: 16 sts and 16 rows = 4" in Multi Color Check Stockinette Stitch. **Take time to save time, check your gauge.**

PATTERN STITCHES:

Corrugated Rib: (multiple of 2 sts)

Rnd 1: *K1 in Color F, p1 in Color E; rep from * around.

Rep Rnd 1 for Corrugated Rib.

Multi Color Check Stockinette Stitch: (multiple of 8 sts)

Knit in colors according to chart.

NOTE

Carry the yarn loosely on WS, as it has a tendency to pull the rib and checks in.

PILLOW

With Color F, CO 192 sts. Join to beg working in-the-rnd, being careful not to twist sts, place marker for beg-of-rnd. Purl 1 rnd. **Begin Corrugated Rib:** Work even until piece meas 1½" from beg. **Change to Multi Color Check Patt:** Beg Rnd 1 of Chart, work until piece meas approx 26" from beg, end with the fourth rnd of any color check. BO all sts in patt.

FINISHING

Block piece to measurements. Sew bottom seam. Insert pillow form and sew top seam.

ABBREVIATIONS

approx—approximately
beg—begin(ning)
BO—bind off
CO—cast on

k—knit
meas—measures
p—purl
patt—pattern

rep—repeat
rnd(s)—round(s)
st(s)—stitch(es)