

# Kumara Diamond Cap

designed by Meg Myers

# Classic Elite Yarns

## The Yarn

**Kumara** – 85% Extrafine Merino, 15% Baby Camel

Kumara is a warm, lightweight, super soft yarn with a slight halo. The merino is dyed before being spun with the undyed camel hair resulting in soft, muted colors. Kumara's six twisted plies yield great stitch definition.

## The Pattern

**Skill Level:** Intermediate

**SIZE:** One size

**Finished Meas:** 19" circumference at brim, unstretched after blocking

### YARN:

**Kumara** by **Classic Elite** (85% extrafine merino, 15% baby camel; 50 gram ball = approx 128 yards)

- 1 ball 5758 Mars Red

### NEEDLES AND OTHER MATERIALS:

Circular knitting needle (16") in sizes US 7 (4.5 mm) and 9 (5.5 mm) and a set of double pointed needles (dpns) in size US 9 (5.5 mm) **or size to obtain gauge.** Stitch marker

### GAUGE:

16 sts and 24 rows = 4" in Diamond Pattern with larger needle. **Take time to save time, check your gauge.**

### ABBREVIATIONS:

**approx:** approximately

**beg:** begin(ning)

**CO:** cast on

**dec ('d):** decrease(d)

**inc:** increase

**k:** knit

**LH:** left hand

**meas:** measure(s)

**p:** purl

**patt:** pattern

**rem:** remaining

**rep:** repeat

**RH:** right hand

**rnd(s):** round(s)

**st(s):** stitch(es)





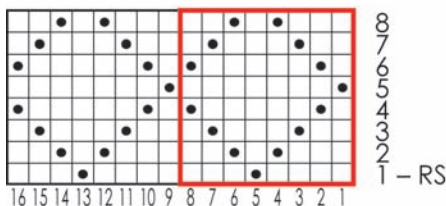
**SPECIAL TERMS:**

**m1: (make 1)** Insert LH needle under horizontal strand between st just worked and next st, from the front to the back, knit through the back loop (1 st increased).

**s2kp:** Slip 2 sts knitwise, from the LH needle to the RH needle, k1, pass slipped sts over k1 (2 sts decreased).

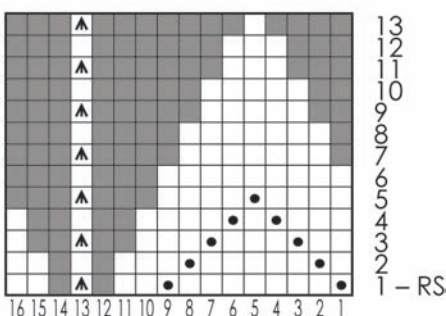
**Diamond Chart**

(multiple of 8 sts; 8 rnds)  
two repeats shown



**Crown Decrease Chart**

(multiple of 16 sts; dec'd to multiple of 2 sts; 13 rnds)



- knit
- purl
- s2kp (see Special Terms)
- no stitch

**PATTERN STITCHES:**

**Circular 1 x 1 Rib: (multiple of 2 sts)**

All rnds: \*K1, p1; rep from \* around.

**Diamond Pattern: (multiple of 8 sts)**

(also, see chart)

Rnd 1: \*K4, p1, k3; rep from \* around.

Rnd 2: \*K3, p1, k1, p1, k2; rep from \* around.

Rnd 3: \*K2, p1, k3, p1, k1; rep from \* around.

Rnd 4: \*K1, p1, k5, p1; rep from \* around.

Rnd 5: \*P1, k7; rep from \* around.

Rnd 6: Rep Rnd 4.

Rnd 7: Rep Rnd 3.

Rnd 8: Rep Rnd 2.

Rep rnds 1 – 8 for Diamond Patt.

**Crown Decrease Pattern: (multiple of 16 sts dec'd to multiple of 2 sts)**

(also, see chart)

Rnd 1: \*P1, k7, p1, k2, s2kp, k2; rep from \* around – 98 sts.

Rnd 2: \*K1, p1, k5, p1, k6; rep from \* around.

Rnd 3: \*K2, p1, k3, p1, k3, s2kp, k1; rep from \* around – 84 sts.

Rnd 4: \*K3, p1, k1, p1, k6; rep from \* around.

Rnd 5: \*K4, p1, k4, s2kp; rep from \* around – 70 sts.

Rnd 6: Knit.

*(Note: For each of the rem decrease rnds it will be necessary to borrow the first stitch of the following rnd to complete the final s2kp of the rnd. Move the marker one stitch to the left as necessary.)*

Rnd 7: \*K7, s2kp; rep from \* around – 56 sts.

Rnd 8: Knit.

Rnd 9: \*K5, s2kp; rep from \* around – 42sts.

Rnd 10: Knit.

Rnd 11: \*K3, s2kp; rep from \* around – 28 sts.

Rnd 12: Knit.

Rnd 13: \*K1, s2kp; rep from \* around – 14 sts.

Work rnds 1–13 for Crown Dec Patt.

**NOTE:** You will need to use your swatch to complete the cap.

**CAP**

With smaller circular needle, CO 84 sts. Place marker for beg-of-rnd and join to beg working in-the-rnd, being careful not to twist sts. **Begin 1 x 1 Rib;** work even until pc meas ¾" from beg. **Inc Rnd:** \*K3, m1; rep from \* around – 112 sts.

**Change to larger needle and beg Diamond Patt:** Work Rnds 1 – 8 of Diamond chart 3 times, then work Rnds 1 – 4 once more – 28 rnds total. **Change to**

**Crown Dec Patt:** Work Rnds 1-13, changing to dpns when necessary – 14 sts rem. Break yarn leaving approx 8" tail, thread through rem sts and draw up tightly.

**FINISHING**

Block to measurement.