

Classic Elite Yarns

Giselle Ascot and Beret Set

Giselle

66% kid mohair, 23% wool, 11% nylon

Giselle is a beautiful kid mohair and wool blend. It's a little heavier than lace weight but plenty light and airy for floaty designs. Kid mohair is fine and lustrous and has many of the good qualities of wool. It's soft and can absorb moisture yet still feel warm and dry. Mohair (the fiber) comes from Angora goats (the animal). Angora goats are small and friendly, and they're shorn two times a year. Their fleece makes a yarn that is soft, lustrous, lightweight, and warm. Most often, mohair is spun with a binder for durability. Picture a two-part yarn: The fuzzy part, what you see and touch, and a core to support the fuzzy part. In Giselle, the fuzz is 100% kid mohair, and it is worked into a core made from of wool (for softness and warmth) and nylon (for strength). This allows the yarn to have body- it's silky smooth to touch and wear, but not so drapery that your sweater will lose its shape. Knitted on a large needle, it's lightweight and airy. The lustrous mohair also takes dyes beautifully as you can see in the dreamy 13 available colors of Giselle.

Giselle Ascot and Beret Set

Designed by: Cecily Glowik MacDonald

SIZE: One Size

Finished Measurements: Ascot: Approx 26" long and 8" wide.

Beret: Approx 20 1/2" circumference

MATERIALS

Giselle by **Classic Elite** (66% kid mohair, 23% wool, 11% nylon; 50 gram ball = approx 225 yards)

- 2 balls 4188 Cordoba Rose (1 ball is used for each ascot and beret)

Needles:

- One pair each size US 7 and 10 (4.5 and 6 mm) for ascot
- One 16" circular each size US 4 and 7 (3.5 and 4.5 mm) for beret
- One set double pointed needles (dpns) size US 7 (4.5 mm) for beret

Or size to obtain gauge.

- Stitch markers
- One 5/8" button for ascot
- One 3/4" button for beret
- Stitch holders or waste yarn for ascot
- Tapestry needle for beret

GAUGE: 22 sts and 29 sts = 4" in Lace Pattern with size US 7 (4.5 mm) needles. **Take time to save time, check your gauge.**



ABBREVIATIONS

approx – approximately

beg – begin(ning)

BO – bind off

BOR – beginning of round

CO – cast on

dec('d) – decrease(d)

dpn(s) – double pointed needle(s)

EOR – every other row/round

est – establish(ed)

Gtr st – Garter Stitch

k – knit

k2tog – see Special Terms

LH – left hand

meas – measures

p – purl

p2tog – see Special Terms

patt – pattern

pc(s) – piece(s)

pm – place marker(s)

rem – remain(ning)

rep(s) – repeat(s)

RH – right hand

rnd(s) – round(s)

RS – right side

ssk – see Special Terms

st(s) – stitch(es)

WS – wrong side

yo – see Special Terms

SPECIAL TERMS:

ssk: (slip, slip, knit) Slip 2 sts, 1 at a time, knit-wise to the RH needle; return sts to LH needle in turned position and knit them together through the back loops (1 st decreased).
k2tog: Knit 2 sts together (1 st decreased).
yo: yarn over needle (1 st increased).
p2tog: Purl 2 sts together (1 st decreased).

PATTERN STITCHES:

Stockinette Stitch (St st): Knit on RS, purl on WS.

1 x 1 Rib: (multiple of 2 sts)

Row 1: (RS) *K1, p1; rep from * to end.
 Row 2: Knit the knit sts and purl the purl sts as they face you.
 Rep Row 2 for 1 x 1 Rib.

Lace Pattern:

Straight — (multiple of 13 sts + 1)

(also, see chart)
 Row 1: (RS) K1, *yo, k2, ssk, p4, k2tog, k2, yo, k1; rep from * to end.
 Row 2: P1, *p4, k4, p5; rep from * to end.
 Row 3: K1, *k1, yo, k2, ssk, p2, k2tog, k2, yo, k2; rep from * to end.
 Row 4: P1, *p5, k2, p6; rep from * to end.
 Row 5: K1, *k2, yo, k2, ssk, k2tog, k2, yo, k3; rep from * to end.
 Row 6: Purl.
 Rep Rows 1–6 for Lace Patt.

Lace Pattern

Circular — (multiple of 13 sts)

(also, see chart)
 Rnd 1: *K1, yo, k2, ssk, p4, k2tog, k2, yo; rep from * around.
 Rnd 2: *K5, p4, k4; from * around.
 Rnd 3: *K2, yo, k2, ssk, p2, k2tog, k2, yo, k1; rep from * around.
 Rnd 4: *k6, p2, k5; rep from * around.
 Rnd 5: *K3, yo, k2, ssk, k2tog, k2, yo, k2; rep from * around.
 Rnd 6: Knit.
 Rep Rnds 1–6 for Circular Lace Patt.

Garter Stitch (Gtr St): Knit all rows.

Three Needle Bind Off Method: Slip the sts from holders onto each of 2 needles; with the RS of garment pcs together (to form ridge on inside of garment), hold the needles parallel. With a third needle knit the first st of front and back needles together, *knit next st from each needle together, (2 sts on RH needle), BO 1 st; rep from * until all sts are BO.

Backwards Loop Cast-on Method: *Wrap yarn around left thumb from front to back and secure in palm with other fingers. Insert needle upwards through strand on thumb. Slip loop from thumb onto RH needle, pulling yarn to tighten. Rep from * for desired number of sts.

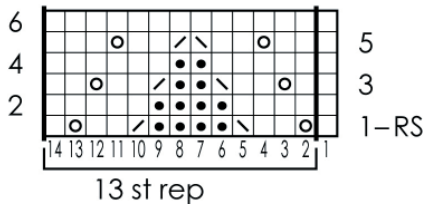
ASCOT (make 2)

With smaller needles, CO 40 sts. (WS) **Begin St st;** work 1 row. **Change to Lace Patt;** work until 3 full row reps have been completed, end after WS row 6 of Lace Patt. **Change to larger needles;** work until 6 more full row reps have been completed, end after WS row 6 of Lace Patt. **Change to Gtr St;** (RS) work even until pc meas 13¼" from beg, end after a RS row. Slip all sts onto st holder or waste yarn. Break yarn, set aside. Rep for second pc, do not break yarn on second pc.

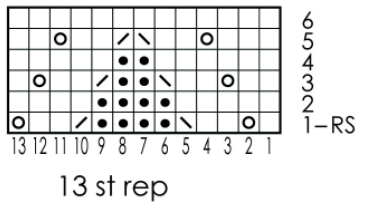
FINISHING

Use Three Needle Bind Off Method to join 2 Ascot pcs. **Buttonhole tab:** With smaller needles and RS facing, beg 3½" up from CO edge and 1" in from right edge (see photo), pick-up and knit 9 sts. **Est Patt:** (WS) Slip 1 st purlwise wyif, work to end in St st. Next Row: (RS) Slip 1 st purlwise wyib, work to end in St st. Work as est until pc meas 1¼" from pick-up row, end after a WS row. **Buttonhole Row:** (RS) Work 3 sts as est, BO 3, work to end. Next row: (WS) Work to BO sts, use Backwards Loop Method to CO 3 sts, work to end. (RS) Work 3 rows even as est, end after a RS row. (WS) BO all sts knitwise. Sew button onto other side of Ascot 3½" up from CO edge and 2" in from left edge (see photo).

Straight Lace Chart
 (multiple of 13 sts + 1; 6 row rep)



Circular Lace Chart
 (multiple of 13 sts; 6 row rep)



- knit on RS, purl on WS
- purl on RS, knit on WS
- yo (see Special Terms)
- ssk (see Special Terms)
- k2tog (see Special Terms)



BERET

With smaller circular needle, CO 118 sts. Do not join, work back and forth in rows. **(RS) Begin 1 x 1 Rib**; work even until pc meas $\frac{3}{4}$ " from beg. **Change to larger circular needle**; being careful not to twist sts, join to beg working in-the-rnd. Place marker (pm) for beg-of-rnd (BOR). **Change to St st and Dec Rnd**: K2tog, work in St st to end—117 sts. Work 2 more rnds even. **Change to Circular Lace Patt**; work even until 3 full row reps have been completed, end after rnd 6 of Circular

Lace Patt. **Change to St st**; work even until pc meas 5" from beg. **Shape Crown, Set-up Row**: *K2tog, k11, pm; rep from * around, (BOR marker counts as last marker)—108 sts rem. **Dec Rnd 1**: *K2tog, work to marker, slip marker; rep from * around—9 sts dec'd. Rep crown dec rnd 1 every rnd 9 more times—18 sts rem. **Dec Rnd 2**: *K2tog; rep from * around, removing all markers except for BOR—9 sts rem. Break yarn leaving a 6" tail. Use tapestry needle to thread tail through rem 9 sts, pull tight to close top of hat.

FINISHING

Block lightly over 10" dinner plate. **Buttonhole Tab**: With RS facing and smaller needle, pick-up and knit 9 sts along selvedge edge of rib. **(WS) Begin Gtr St**; work 5 rows even, end after a WS row. **Buttonhole Row**: (RS) K4, BO 2 sts, work to end. Next row: (WS) Work to BO sts, use Backwards Loop Method to CO 2 sts, work to end. **Shape Buttonhole Tab, Dec Row**: (RS) K1, ssk, work to last 3 sts, k2tog, k1—2 sts dec'd. Rep buttonhole tab dec row EOR 1 time—5 sts rem. **BO Row**: Work the following, while binding off sts: (WS) p2tog, p1, p2tog. Sew button onto other side of rib band, approx 1" in from side edge.

