

# Classic Elite Yarns

## Charmed Floral Fantasy Shawl



Designed by: Madison St. John

**SIZES:** Regular (Long, Extra Long)

**Finished Measurements:** approx. 22" wide x 54 (66, 78)" long

**MATERIALS:**

*Charmed* by Classic Elite (85% cashmere, 15% mohair; 50 gram hank = approx 130 yards)

- 5 (6, 7) hanks 76708 Heathered Rose

**Needles**

- One pair size US 9 (5.5 mm)

**Or size to obtain gauge**

- Stitch markers
- Large stitch holder or waste yarn
- Tapestry needle

**GAUGE:** 14 sts and 16 rows = 4" in Floral Fantasy Lace Patt. **Take time to save time, check your gauge.**

**SPECIAL TERMS:**

**yo:** Yarn over (1 st increased).

**p2tog:** Purl 2 sts together (1 st decreased).

**P15tog:** Purl 15 sts together (14 sts decreased).

**p1-f/b:** Purl into the front loop, then the back loop of next st (1 st increased).

**k2tog:** Knit 2 sts together (1 st decreased).

**ssk: (slip, slip, knit)** Slip 2 sts, 1 at a time, knit-wise to the RH needle; return sts to LH needle in turned position and knit them together through the back loops (1 st decreased).

**ssp: (slip, slip, purl)** Slip 2 sts, 1 at a time, knit-wise to the RH needle; return sts to LH needle in turned position and purl them together through the back loops (1 st decreased).

**PATTERN STITCHES:**

**Cable Cast-on Method:** Place a slipknot on LH needle and k1, slip new st onto LH needle; \*insert RH needle between first 2 sts on LH needle, k1 from this position, slip new st onto LH needle. Rep from \* for desired number of sts.

**Garter Stitch (Gtr st):** Knit every row.

**Stockinette Stitch (St st):** Knit on RS, purl on WS.

**Border Lace Pattern: (multiple of 19 sts)**

(also, see chart on page 2)

Row 1: (RS) \*K1, [yo] 2 times, p2tog, k13, p2tog, [yo] 2 times, k1; rep from \* across—21 sts.



Row 2: \*K1, [k1, p1] into yo from prev row, k15, [p1, k1] into yo from prev row, k1; rep from \* across.

Row 3 and 4: Knit.

Row 5: \*K1, ([yo] 2 times, p2tog) 2 times, k11, (p2tog, [yo] 2 times) 2 times, k1; rep from \* across—25 sts

Row 6: \*(K1, [k1, p1] into yo from prev row) 2 times, k13, ([p1, k1] into yo from prev row, k1) 2 times; rep from \* across.

Row 7: Knit.

Row 8: \*K6, ([yo] 2 times, k1) 14 times, k5; rep from \* across—53 sts.

Row 9: \*K1, ([yo] 2 times, p2tog) 2 times, [yo] 2 times, slip the next 15 sts to the RH needle dropping all yo's, return the elongated stitches to the LH needle and p15tog, [yo] 2 times, (p2tog, [yo] 2 times) 2 times, k1; rep from \* across—19 sts.

Row 10: \*(K1, [p1, k1] into yo from prev row) 3 times, k1, ([k1, p1] into yo from prev row, k1) 3 times; rep from \* across.

Work Rows 1–10 for Border Lace Patt.

### Floral Fantasy Lace Pattern: (multiple of 34 sts)

(also, see chart)

Row 1: (RS) \*K3, k2tog, k4, yo, p2, [k2, yo, ssk] 3 times, p2, yo, k4, ssk, k3; rep from \* across.

Row 2: \*P2, ssp, p4, yo, p1, k2, [p2, yo, p2tog] 3 times, k2, p1, yo, p4, p2tog, p2; rep from \* across.

Row 3: \*K1, k2tog, k4, yo, k2, p2, [k2, yo, ssk] 3 times, p2, k2, yo, k4, ssk, k1; rep from \* across.

Row 4: \*Ssp, p4, yo, p3, k2, [p2, yo, p2tog] 3 times, k2, p3, yo, p4, p2tog; rep from \* across.

Row 5–12: Rep Row 1–4, 2 times.

Row 13: \*Yo, ssk, k2, yo, ssk, p2, yo, k4, ssk, k6, k2tog, k4, yo, p2, k2, yo, ssk, k2; rep from \* across.

Row 14: \*Yo, p2tog, p2, yo, p2tog, k2, p1, yo, p4, p2tog, p4, ssp, p4, yo, p1, k2, p2, yo, p2tog, p2; rep from \* across.

Row 15: \*Yo, ssk, k2, yo, ssk, p2, k2, yo, k4, ssk, k2, k2tog, k4, yo, k2, p2, k2, yo, ssk, k2; rep from \* across.

Row 16: \*Yo, p2tog, p2, yo, p2tog, k2, p3, yo, p4, p2tog, ssp, p4, yo, p3, k2, p2, yo, p2tog, p2; rep from \* across.

Row 17–24: Rep Row 13–16, 2 times.

Rep Row 1–24 for Floral Fantasy Lace Patt.

### Kitchener Stitch:

Step 1: Bring threaded tapestry needle through first st on front needle as if to knit and slip this st off needle. Step 2: Bring threaded tapestry needle through next st on front needle as if to purl and leave st on needle. Step 3: Bring threaded tapestry needle through first st on back needle as if to purl and slip this st off needle. Step 4: Bring threaded tapestry needle through next st on back needle as if to knit and leave st on needle. Rep Steps 1–4 until no sts rem on needles.

### NOTES:

Shawl is worked in 2 halves and then grafted in the center.

### SHAWL (First Half)

Using the Cable Cast-on Method, CO 76 sts. (RS) **Begin Gtr st:** work 2 rows, end WS row. Place markers after every 19<sup>th</sup> st. **Change to Border Lace Patt:** (RS) Beg Row 1, work 10 rows, end WS Row 10—76 sts. **Change to St st:** (RS) work 2 rows, end WS row. **Eyelet Row:** (RS) K2tog, \*yo, k2tog; rep from \* across—75 sts rem. (WS) P71, p1-f/b, purl across—76 sts. Remove markers. **Est Floral Fantasy Lace Patt:** K4 (edge sts, keep in Gtr st throughout), pm, beg Row 1, work 68 sts in Floral Fantasy Lace Patt, pm, k4 (edge sts, keep in Gtr st throughout). Work even until 99 (123, 147) rows have been worked in Floral Fantasy Lace Patt, end RS Row 3, slip sts to holder. Break yarn.

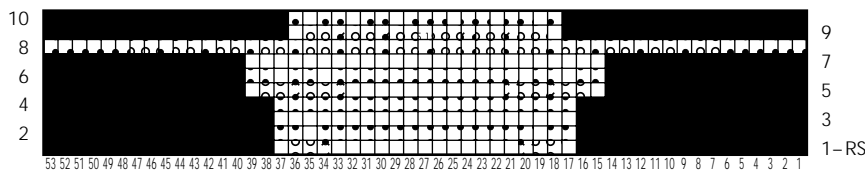
### SHAWL (Second Half)

Work as for first half until 88 (112, 136) rows have been worked in Floral Fantasy Lace Patt, end WS Row 16. Do NOT break yarn.

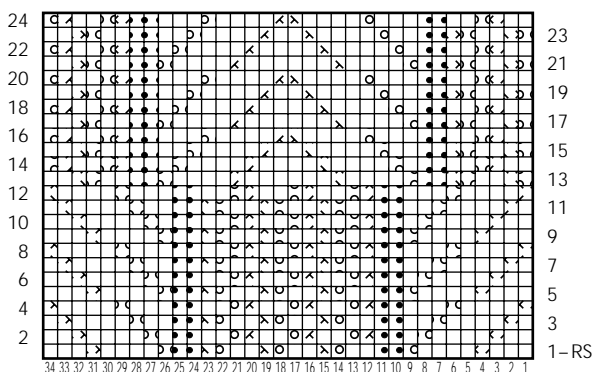
### FINISHING

Slip sts from holder onto empty needle preparing to work a WS row. Hold needles together so tips are facing the same direction, and WS's of piece's are facing each other. With tapestry needle, graft the 2 halves using the Kitchener Stitch. Block piece to measurements

Border Lace Chart  
(multiple of 19 sts; 10 rows)



Floral Fantasy Lace Chart  
(multiple of 34 sts; 24 row rep)



- Knit on RS, purl on WS
- Purl on RS, knit on WS
- Yarn over
- p2tog (see Special Terms)
- p15tog (see Special Terms)
- k2tog on RS, p2tog on WS (see Special Terms)
- ssk on RS, ssp on WS (see Special Terms)

## ABBREVIATIONS

- approx** – approximately
- beg** – begin(ning)
- CO** – cast on
- est** – establish(ed)
- Gtr st** – Garter Stitch
- k** – knit
- p1-f/b** – see Special Terms
- k2tog** – see Special Terms
- LH** – Left Hand
- p** – purl
- p15tog** – see Special Terms
- p2tog** – see Special Terms
- pat** – pattern
- prev** – previous
- rem** – remain(ning)
- rep** – repeat
- RH** – Right Hand
- RS** – Right Side
- ssk** – see Special Terms
- ssp** – see Special Terms
- st(s)** – stitch(es)
- St st** – Stockinette Stitch
- WS** – Wrong Side
- yo** – see Special Terms