

CEY KNITS CORRECTIONS

All corrections can be seen on our website at: http://classicliteyarns.com/pattern_errata.php

Page 27

9064 - Country Road

Provence Cropped Cardigan - Page 12

MATERIALS:

Provence by **Classic Elite** (100% mercerized Egyptian cotton; 100 gram hank = approx 205 yards)

- 5 (5, 6, 7, 8) hanks 2661 Summer Wheat

PATTERN STITCHES:

Garter Stitch (Gtr st): Knit every row.

SLEEVE

Est patt:(RS) Work 2 sts in St st (edge sts), work 34 (34, 39, 39, 44) sts in 4 x 1 Twisted Stitch Rib, work 2 sts in St st (edge sts). Work as est for 3 rows. Continue to shape sleeve as instructed in pattern.

Page 34

9064 - Country Road

Provence Flower Applique Cardigan - Page 10

PATTERN STITCHES:

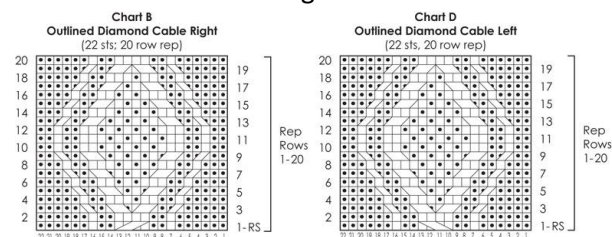
Picot Edging for Body: Work 4 sc, *ch 4, skip 1 sc, work 4 sc; rep from * to end.

Picot Edging for Sleeves: Work 3 sc, *ch 3, skip 1 sc, work 3 sc; rep from * to end.

Page 51

9065 - Noble Knits

Lush Oriental Jacket - Page 17



Click image to enlarge.

LEFT FRONT:

Est patt: (RS) Work 1 st in Gtr st (edge st), 8 (12, 16, 20, 24) sts in Bamboo st; p2; 10 sts Chart A...

SLEEVES:

Est patt: (RS) Work 1 st in Gtr st (edge st), 36 (38, 40, 42, 44) sts in Bamboo st

Page 54

9075 - Luxe

La Gran Cardigan in Two Lengths - Page 1

BACK

... **Shape Neck:** (RS) Work across to marker, join second ball of yarn, BO 24 sts, work to end—16 (17, 18, 19) sts rem each side. Working both sides at the same time, at each neck edge, dec 1 st once—15 (16, 17, 18) sts rem each side for shoulders. Work even until...

Shape Shoulders: (RS) BO 5 (5, 6, 6) sts at beg of next 4 rows, then 5 (6, 5, 6) sts at beg of next 2 rows. (This makes it the same as the shoulder shaping on the Front)

Page 68

9068 – Tweed 3

Corrections for sleeve:

Shape sleeve: Inc 1 st each side every 4 rows 0 (0, 2, 9) times every 6 rows 7 (12, 19, 14) times every 8 rows 10 (7, 0, 0) times Total stitches increased are 34 (38, 42, 46). Sleeve will now have the required - 78 (82, 86, 90) sts.

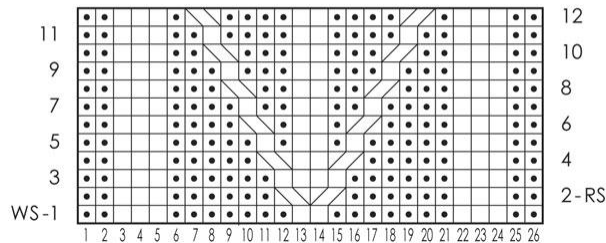
Cap shaping remains the same.

Page 74

9068 - Tweed Three

Skye Tweed Cable Pullover - Pages 3-5

V-Cable Chart
(26 sts; 12 row rep)



Click image to enlarge.

also, in the Right Eyelet Chart (aka Chart E), work all ssk sts as k2tog sts.

Page 90

9075 - Luxe

Wool Bam Boo Cabled Cardigan - Page 14

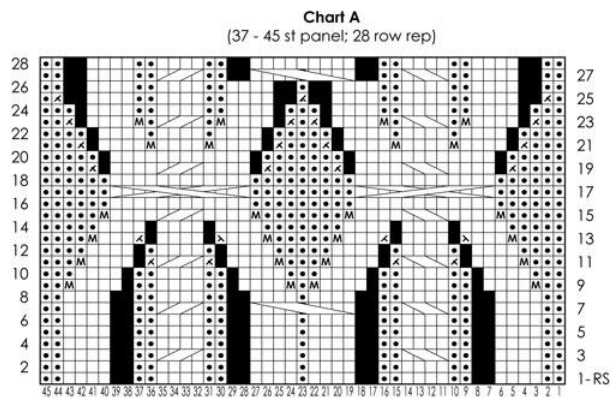
BACK

Joining Row: With RS facing, work as est across sts for Right Back; slip sts for Left Back to empty needle...

Page 99

9078 - Tweed Four

Waterlily Cabled Pullover - Page 15

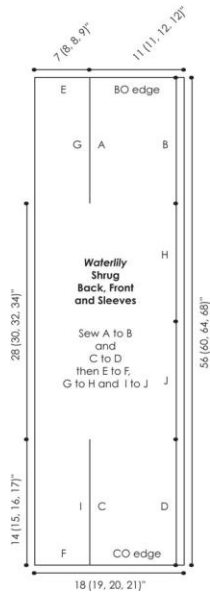


Page 100

9078 - Tweed Four

Waterlily Shrug - Page 19

Change to assembly instructions on schematic.



Page 106

9074 - Essentials

Striped and Ribbed Unisex Crewneck

SLEEVES: Final stitch count is 88 (92, 98, 102) sts,

Page 154

9056 - Weekend House Party

Bubbles Rib Cardigan

LEFT FRONT:

Shape Neck: (WS) At neck edge, BO 4 sts 3 times, then dec 1 st every row 2 (2, 5, 5) ö 9 (9, 12, 12) sts rem for shoulder.

Page 160

9063 - Joyride

Star and Dazzle Girl's Cat Sweater

BACK

Shape Shoulders and Neck: (RS) BO 3 (4, 3) sts at beg of next 2 (4, 6) rows, then 4 (0, 0) sts at beg of next 2 rows; **and at the same time**, on the first row of shoulder shaping, work across to center 16 sts, join second ball of yarn and BO center sts, work to end. Working both sides at the same time, BO 4 sts at each neck edge once.

SLEEVES

Using two strands of CC held together, CO 32 (34, 36) sts; work 3 rows in Rev St st, end RS row. (WS) **Change to MC with two strands of yarn held together, and St st**; work 4 rows, end RS row. Knit 1 WS row. (RS) **Change to St st**; work 3 rows, end RS row. Knit 1 WS row. (RS) **Change to St st; and Shape Sleeve**: (RS) Inc 1 st at each side on this row, then every 6 rows 3 (4, 5) times - 40 (44, 48) sts. Work even until piece meas 9½ (10½, 11¼)" from beg, end WS row. **Shape Cap**: (RS) BO 2 (3, 3) sts at beg of next 2 rows, then at each side, dec 1 st EOR 5 (6, 7) times - 26 (26, 28) sts. BO 2 sts at beg of next 6 (6, 8) rows - 14 (14, 12) sts rem. BO rem sts.

Page 187

9055 - KIDS KOLLECTION

Flash Starfish Pullover

Seed Stitch Rib: (multiple of 5 sts + 2)

Row 1: (RS) K2, *p1, k1, p1, k2; rep from * across.

Row 2: * P2, p1, k1, p1; rep from * across to last 2 sts, p2

BACK CO 72 (77, 82, 87, 92) sts; work in Seed st Rib until piece meas 1" from beg, inc 1 (0, 1, 0, 1) st on last WS row ö 73 (77, 83, 87, 93) sts.

Page 204

9068 - Tweed Three

Beatrice Hat - Pages 6-7

Note: I-Cord Edging is not used in this pattern.

Crown

Round 3: K1, *p1, k2; rep from *, end last rep k1.

Round 4: K1, *p1, m1p, k2; rep from *, end last rep k1 16 sts.

Round 5: K1, *p1, m1p, p1, k2; rep from *, end last rep k1 20 sts.

Round 6: K1, *p2, m1p, p1, k2; rep from *, end last rep k1 24 sts.

Round 7: K1, *p2, m1k, p2, k2; rep from *, end last rep k1 28 sts.

Round 8: K1, *p2, k1, m1k, p2, k2; rep from *, end last rep k1 32 sts.

Rounds 9 - 21: as in pattern.

Round 22: K1, *p2, m1p, p2, k2; rep from * around to last st, k1 112 sts (end here for size Large).

Change to circular needle. Next Round: K1, *p3 (4, 5), k2; rep from *, end last rep k1 80 (96, 112)

Continue as in pattern.

Page 212

9074 - Essentials

Montera Cabled Purse - Page 10

ABBREVIATIONS:

1/1 RC: Slip 1 st to cn, hold in back; k1; k1 from cn.

1/1 LC: Slip 1 st to cn, hold in front; k1; k1 from cn.

2/2 RC: Slip 2 sts to cn, hold in back; k2; k2 from cn.

2/2 LC: Slip 2 sts to cn, hold in front; k2; k2 from cn.