

Classic Elite Yarns

Caitlin's Cabled Bag



Designed by: Pam Allen

SIZES: One Size

Finished Measurements: 17" wide x 11" high

MATERIALS:

Aspen by **Classic Elite** (50% alpaca, 50% wool; 100 gram hank = approx 51 yards)

- 4 hanks 1503 Mogul

Needles

- One pair size US 15 (10 mm)
- One 32" circular size US 15 (10 mm)

Or size to obtain gauge

- Cable needle (cn)
- Stitch markers
- Purse handle with 10½" slit
- 1 yard of fabric for bag lining (optional)

GAUGE: 8½ sts and 14 rows = 4" in Stockinette Stitch (St st). **Take time to save time, check your gauge.**

ABBREVIATIONS:

C4B: Slip 2 sts to cn, hold in back; k2; k2 from cn.

C4F: Slip 2 sts to cn, hold in front; k2; k2 from cn.

C8B: Slip 4 sts to cn, hold in back; k4; k4 from cn.

k2tog: Knit 2 sts together (1 st decreased).

ssk (slip, slip, knit) Slip 2 sts, 1 at a time, knitwise to the RH needle; return sts to LH needle in turned position and knit them together through the back loops (1 st decreased).

PATTERN STITCHES:

Stockinette Stitch (St st): Knit on RS, purl on WS.

Cable Pattern: (panel of 22 sts dec'd to 19 sts)

(also, see chart on page 2)

Rnds 1, 9, 13, 17, 21, 25, 29 and 33: (RS) P1, C4B, p2, k8, p2, C4F, p1.

Rnds 2-4, 6-8, 10-12, 14, 15, 18-20, 22-24, 26, 28, 30-32 and 34: P1, k4, p2, k8, p2, k4, p1.

Rnd 5: P1, C4B, p2, C8B, p2, C4F, p1.

Rnds 16 and 27: P1, k4, p2, C8B, p2, k4, p1.

Rnd 35: P1, k1, k2tog, k1, p2, k3, ssk, k3, p2, k1, ssk, k1, p1—19 sts.

Work Rnds 1-35 for Cable Patt.

Knitted Cast-on Method: *K1, slip new st onto LH needle; rep from * for desired number of sts.

Wrap and turn: Knit row—Slip next st purlwise onto RH needle, bring yarn to front of work, return slipped st to LH needle, bring yarn to back of work, then turn work. **Purl row**—Slip next st purlwise onto RH needle, bring yarn to back of work, return slipped st to LH needle, bring yarn to front of work, then turn work.



Hide Wraps: Knit row—Pick up the wrap from the front with the RH needle and knit together with the st it wraps. **Purl row**—pick up the wrap through back of loop with RH needle and purl together with the st it wraps.

Three Needle Bind Off Method: Slip the sts from holders onto each of 2 needles; with the RS of garment pieces together (to form ridge on inside of garment), hold the needles parallel. With a third needle knit the first st of

ABBREVIATIONS

approx—approximately

beg—begin(ning)

BO—bind off

BOR—beginning of round

C4B—see Special Terms

C8B—see Special Terms

C4F—see Special Terms

cn—cable needle

CO—cast on

dec('d)—decrease(d)

est—establish(ed)

k—knit

k2tog—see Special Terms

LH—left hand

meas—measures

p—purl

pat—pattern

pm—place marker

rem—remain(ning)

rep—repeat

RH—right hand

rnd(s)—round(s)

RS—right side

ssk—see Special Terms

st(s)—stitch(es)

St st—Stockinette Stitch

WS—wrong side

front and back needles together, *knit next st from each needle together, (2 sts on RH needle), BO 1 st; rep from * until all sts are BO.

NOTES:

1. Bag is worked from the top down; first flap is knit back and forth on straight needles. The second flap is knit back and forth on circular needle, sts are CO for the gusset, then sts from the first flap are worked from straight to circular needle, then sts are CO for the other gusset.

FLAPS:

First Flap: With straight needle, CO 26 sts. **(WS) Begin Straight St st;** work even until piece meas approx 1 3/4" from beg, end RS row. Break yarn. **Second Flap:** With circular needle, CO 26 sts. **(WS) Begin Straight St st;** work even until piece meas approx 1 3/4" from beg, end WS row. Turn. (RS) Using Knitted Cast-on Method, CO 14 sts—40 sts. Turn. (WS) Purl across all sts of first flap—66 sts. Turn. (RS) Using Knitted Cast-on Method, CO 14 sts—80 sts.

BAG

(RS) *K7, place marker (pm), k9, p1, k4, p2, k8, p2, k4, p1, k2; rep from * 1 time. Join to knit in-the-rnd, being careful not to twist sts, k7, slip marker for beg-of-rnd (BOR). **Est Patt:** K9, beg Rnd 1 of Cable Patt, work across 22 sts, k18, beg Rnd 1 of Cable Patt, work across 22 sts, k9. Work 30 rnds as est, end Rnd 31 of Cable Patt. **Rnd 32, dec:** *K2tog, work as est to 2 sts before marker, ssk; rep from * 1 time—76 sts rem. Work 1 rnd even as est. **Rnd 34, dec Front:** K2tog, work as est to 2 sts before marker, ssk—36 sts rem for front. **Begin short rows:** Turn. (WS) Slip 1 st purlwise, work as est to 3 sts

before marker, wrap and turn. (RS) Work to 3 sts before marker, wrap, break yarn leaving approx 6" tail. Slip next 3 sts to RH needle. **Rnd 34, dec Back:** Join yarn at marker. (RS) K2tog, work in patt as est to 2 sts before marker, ssk—36 sts rem for back. **Begin short rows:** Turn. (WS) Slip 1 st purlwise, work as est to 3 sts before marker, wrap and turn. (RS) Work to 3 sts before marker, wrap, cut strand leaving 6" tail. Slip next 3 sts to RH needle. **Rnd 35, dec:** Join yarn at BOR, *k7 hiding wrap, dec 3 sts across Cable Patt, k7 hiding wrap; rep from * 1 time—66 sts rem. Leaving sts on needles, turn piece inside out, RS facing each other. 1 side of bag will be at needle tips. Pull cord of needle between sts that mark the opposite side of the bag—33 sts on each half of needle. With straight needle, BO all sts using Three-Needle BO Method.

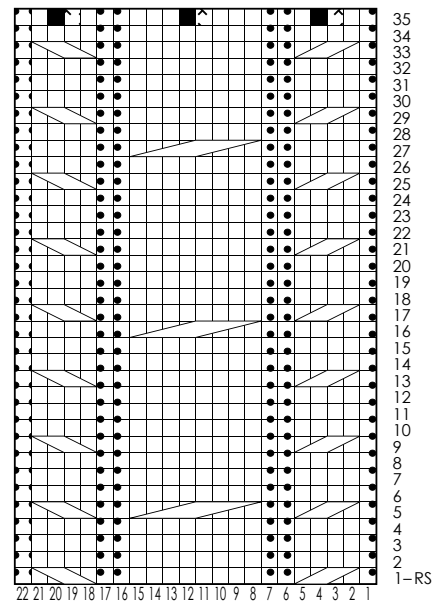
FINISHING

Block piece to measurements. Insert first flap through slit in 1 handle; sew flap down on WS of bag. Rep for second flap.

LINING (optional)

Fold lining fabric in half widthwise. Lay bag on piece of fabric aligning bag bottom with folded edge of lining. Cut out lining pieces following contours of bag leaving 1/2" around edges for seaming. With RS's tog, seam sides of lining tapering off on folded edge. Fold down 3/4" along top edge, WS facing each other; iron. Place lining in bag with WS's facing each other. Blind stitch top edge of lining along top of bag 1/4" below edge. For more detailed information visit: <http://www.classicelityarns.com/WebLetter/Stitches/Lining/Lining.php>

Cable Chart
(panel of 22 sts; 36 rnds)



- Knit
- ◻ Purl
- ▨ Slip 2 sts to cn, hold in back; k2; k2 from cn
- ▩ Slip 2 sts to cn, hold in front; k2; k2 from cn
- ▧ Slip 4 sts to cn, hold in back; k4; k4 from cn
- ◻◻ k2tog
- No stitch
- ◻◻ ssk