

Cotton Bam Boo Kudzu Shawlette

designed by Rachel Henry

Classic Elite Yarns

The Yarn

Cotton Bam Boo

52% Cotton, 48% Bamboo

Cotton Bam Boo is a smooth, lustrous sportweight yarn with great stitch definition. The cotton component allows the blend to knit up into a fabric that is soft and breathable. Bamboo viscose adds a soft sheen, and it is naturally antibacterial. The cotton/bamboo viscose blend gives this yarn a wonderful drape – perfect for summer shawls and wraps.

The Pattern

Skill Level: Experienced

FINISHED MEASUREMENTS:

Midi length: approx 9" deep and 44" long along top

Full length (pictured): approx 9" deep and 62" long along top

YARN:

Cotton Bam Boo by **Classic Elite**

(52% cotton, 48% bamboo; 50 gram ball = approx 130 yards)

4 (5) balls 3622, Bayberry

NEEDLES AND OTHER MATERIALS:

Knitting needles (24" or longer) in size US 6 (4 mm) **or size to obtain gauge.**
Button(s) (if desired)

GAUGE: 20 sts and 28 rows = 4" in Stockinette St; 2 reps of Open Twist Rib = 2¼" wide and 1" tall, blocked and slightly stretched. **Take time to save time, check your gauge.**





ABBREVIATIONS

- approx:** approximately
- BO:** bind off
- CO:** cast on
- dec('d):** decrease(d)
- inc('d):** increase(d)
- k:** knit
- k2tog:** knit 2 sts together (1 st decreased)
- LH:** left hand
- p:** purl
- p3tog:** purl 3 sts together (2 sts decreased)
- rep:** repeat
- RH:** right hand
- RS:** right side
- s2kp:** slip 2 sts tog knitwise to the RH needle, k1, pass 2 slipped sts over knit st (2 sts decreased)
- sk2p:** slip 1 st knitwise, from the LH needle to the RH needle, k2tog, pass slipped st over knit st created by k2tog (2 sts decreased)
- ssk*:** slip 1 st as if to knit, return to left needle, knit 2 sts together through back loop (1 st dec'd)
- st(s):** stitch(es)
- tbl:** through back loop
- WS:** wrong side
- yo:** yarn over

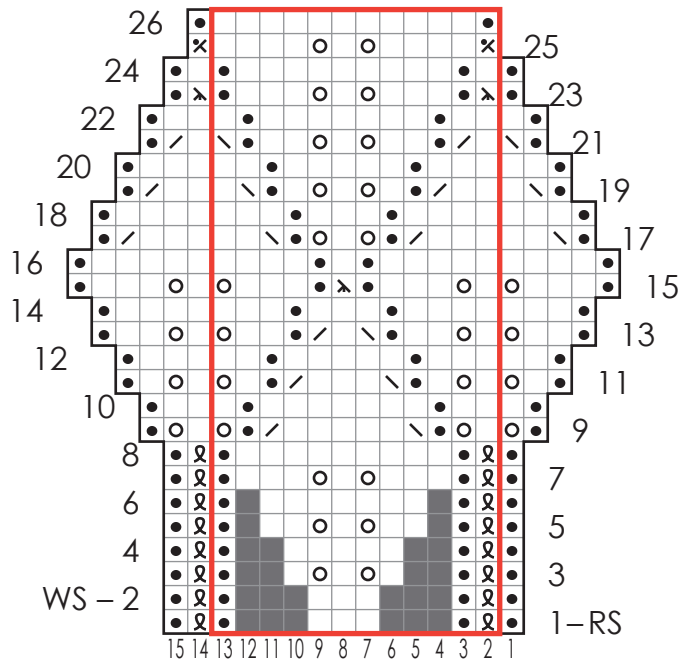
***Note:** this ssk is an “improved” left-leaning decrease that results in a smoother line of decreases that more closely mirrors a k2tog line.

SPECIAL TERMS

wrap 1 over 2: Knit 3 sts, then slip the third st on the RH needle over the first 2 sts.

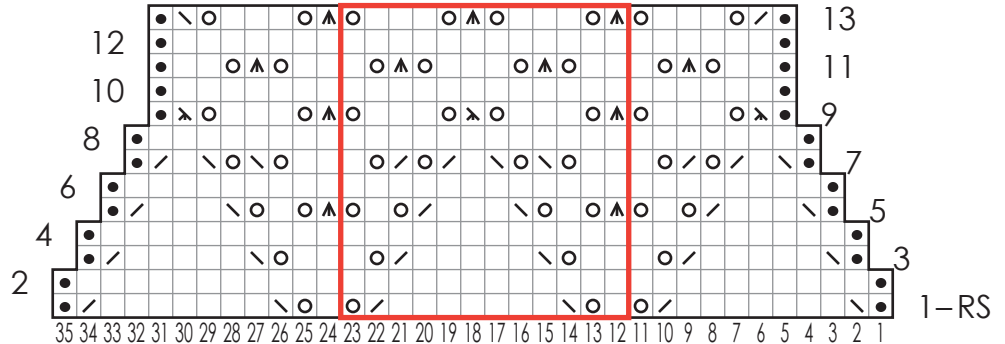
Leaves Chart

(multiple of 6 sts + 3 inc'd to multiple of 12 sts + 1; 26 rows)



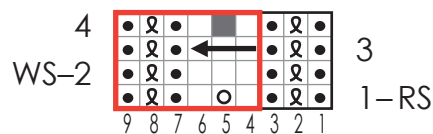
Lattice Chart

(multiple of 12 sts + 25 dec'd to multiple of 12 sts + 15; 13 rows)



Open Twist Rib Chart

(multiple of 5 sts + 3; 4 row rep)



- knit on RS, purl on WS
- ▴ s2kp
- purl on RS, knit on WS
- ▾ sk2p
- ⊗ k1-tbl on RS, p1-tbl on WS
- ⊗ p3tog
- yo
- ← wrap 1 over 2
- ▤ k2tog
- ▭ pattern repeat
- ▮ ssk
- no stitch



ABBREVIATIONS

approx: approximately

BO: bind off

CO: cast on

dec('d): decrease(d)

inc('d): increase(d)

k: knit

k2tog: knit 2 sts together (1 st decreased)

LH: left hand

p: purl

p3tog: purl 3 sts together (2 sts decreased)

rep: repeat

RH: right hand

RS: right side

s2kp: slip 2 sts tog knitwise to the RH needle, k1, pass 2 slipped sts over knit st (2 sts decreased)

sk2p: slip 1 st knitwise, from the LH needle to the RH needle, k2tog, pass slipped st over knit st created by k2tog (2 sts decreased)

ssk*: slip 1 st as if to knit, return to left needle, knit 2 sts together through back loop (1 st dec'd)

st(s): stitch(es)

tbl: through back loop

WS: wrong side

yo: yarn over

***Note:** this ssk is an "improved" left-leaning decrease that results in a smoother line of decreases that more closely mirrors a k2tog line.

SPECIAL TERMS

wrap 1 over 2: Knit 3 sts, then slip the third st on the RH needle over the first 2 sts.

PATTERN STITCHES

Rib: (multiple of 5 sts + 3; 2 row rep)

Row 1 (RS): P1, k1-tbl, p1, *k2, p1, k1-tbl, p1; rep from *.

Row 2: *K1, p1-tbl, k1, p2; rep from * to last 3 sts, k1, p1-tbl, k1.

Repeats Rows 1 and 2 for Rib.

Open Twist Rib: (multiple of 5 sts + 3; 4 row rep)

(also, see chart)

Row 1 (RS): P1, k1-tbl, p1, *k1, yo, k1, p1, k1-tbl, p1; rep from * – 1 st inc'd each rep.

Row 2: *K1, p1-tbl, k1, p3; rep from * to last 3 sts, k1, p1-tbl, k1.

Row 3: P1, k1-tbl, p1, *wrap 1 over 2, p1, k1-tbl, p1; rep from * – 1 st dec'd each rep.

Row 4: *K1, p1-tbl, k1, p2; rep from * to last 3 sts, k1, p1-tbl, k1.

Repeat Rows 1–4 for Open Twist Rib.

Leaves: (multiple of 6 sts + 3 inc'd to multiple of 12 sts + 1; 26 rows)

(also, see chart)

Row 1 (RS): P1, *k1-tbl, p1, k3, p1; rep from * to last 2 sts, k1-tbl, p1.

Row 2: K1, p1-tbl, *k1, p3, k1, p1-tbl; rep from * to last st, k1.

Row 3: P1, *k1-tbl, p1, [k1, yo] twice, k1, p1; rep from * to last 2 sts, k1-tbl, p1 – 2 sts inc'd each rep.

Row 4: K1, p1-tbl, *k1, p5, k1, p1-tbl; rep from * to last st, k1.

Row 5: P1, *k1-tbl, p1, k2, yo, k1, yo, k2, p1; rep from * to last 2 sts, k1-tbl, p1 – 2 sts inc'd each rep.

Row 6: K1, p1-tbl, *k1, p7, k1, p1-tbl; rep from * to last st, k1.

Row 7: P1, *k1-tbl, p1, k3, yo, k1, yo, k3, p1; rep from * to last 2 sts, k1-tbl, p1 – 2 sts inc'd each rep.

Row 8: K1, p1-tbl, *k1, p9, k1, p1-tbl; rep from * to last st, k1.

Row 9: P1, yo, *k1, yo, p1, ssk, k5, k2tog, p1, yo; rep from * to last 2 sts, k1, yo, p1 – 2 sts inc'd.

Row 10: K1, p2, *p1, k1, p7, k1, p2; rep from * to last 2 sts, p1, k1.

Row 11: P1, k1, yo, *k1, yo, k1, p1, ssk, k3, k2tog, p1, k1, yo; rep from * to last 3 sts, k1, yo, k1, p1 – 2 sts inc'd.

Row 12: K1, p3, *p2, k1, p5, k1, p3; rep from * to last 3 sts, p2, k1.

Row 13: P1, k2, yo, *k1, yo, k2, p1, ssk, k1, k2tog, p1, k2, yo; rep from * to last 4 sts, k1, yo, k2, p1 – 2 sts inc'd.

Row 14: K1, p4, *[p3, k1] twice, p4; rep from * to last 4 sts, p3, k1.

Row 15: P1, k3, yo, *k1, yo, k3, p1, sk2p, p1, k3, yo; rep from * to last 5 sts, k1, yo, k3, p1 – 2 sts inc'd.

Row 16: K1, p5, *p4, k1, p1, k1, p5; rep from * to last 5 sts, p4, k1.

Row 17: P1, ssk, k2, *k3, k2tog, p1, yo, k1, yo, p1, ssk, k2; rep from * to last 6 sts, k3, k2tog, p1 – 2 sts dec'd.

Row 18: Repeat row 14.

Row 19: P1, ssk, k1, *k2, k2tog, p1, [k1, yo] twice, k1, p1, ssk, k1; rep from * to last 5 sts, k2, k2tog, p1 – 2 sts dec'd.

Row 20: Repeat row 12.

Row 21: P1, ssk, *k1, k2tog, p1, k2, yo, k1, yo, k2, p1, ssk; rep from * to last 4 sts, k1, k2tog, p1 – 2 sts dec'd.

Row 22: Repeat row 10.

Row 23: P1, *sk2p, p1, k3, yo, k1, yo, k3, p1; rep from * to last 4 sts, sk2p, p1 – 2 sts dec'd.

Row 24: K1, p1, *k1, p9, k1, p1; rep from * to last st, k1.

Row 25: *P3tog, k4, yo, k1, yo, k4; rep from * to last 3 sts, p3tog – 2 sts dec'd.

Row 26: K1, *P11, k1; rep from *.

Work Rows 1–26 for Leaves Pattern.



Lattice: (multiple of 12 sts + 25 dec'd to multiple of 12 sts + 15; 13 rows)

(also, see chart)

Row 1 (RS): P1, ssk, k7, k2tog, yo, *k1, yo, ssk, k7, k2tog, yo; rep from * to last 13 sts, k1, yo, ssk, k7, k2tog, p1 – 2 sts dec'd.

Row 2 and all WS rows: K1, purl to last st, k1.

Row 3: P1, ssk, k5, k2tog, yo, k1, *k2, yo, ssk, k5, k2tog, yo, k1; rep from * to last 12 sts, k2, yo, ssk, k5, k2tog, p1 – 2 sts dec'd.

Row 5: P1, ssk, k3, k2tog, yo, k1, yo, *s2kp, yo, k1, yo, ssk, k3, k2tog, yo, k1, yo; rep from * to last 11 sts, s2kp, yo, k1, yo, ssk, k3, k2tog, p1 – 2 sts dec'd.

Row 7: P1, ssk, k1, [k2tog, yo] twice, k1, *k2, [yo, ssk] twice, k1, [k2tog, yo] twice, k1; rep from * to last 10 sts, k2, [yo, ssk] twice, k1, k2tog, p1 – 2 sts dec'd.

Row 9: P1, sk2p, yo, k3, yo, *s2kp, yo, k3, yo, sk2p, yo, k3, yo; rep from * to last 10 sts, s2kp, yo, k3, yo, sk2p, p1 – 2 sts dec'd.

Row 11: P1, k2, yo, s2kp, yo, k1 *[k2, yo, s2kp, yo, k1] twice; rep from * to last 8 sts, k2, yo, s2kp, yo, k2, p1.

Row 13: P1, k2tog, yo, k3, yo, *[s2kp, yo, k3, yo] twice; rep from * to last 9 sts, s2kp, yo, k3, yo, ssk, p1.

Work Rows 1–13 for Lattice Pattern.

SHAWLETTE

CO 178 (253) sts. Work four rows of Rib pattern. Work rows 1–4 of Open Twist Rib five times then work rows 1–2 once more – 213 (303) sts. Work rows 1–26 of Leaves pattern once – 421 (601) sts. Work rows 1–13 of Lattice pattern once – 411 (591) sts. BO all sts loosely purlwise.

FINISHING

Wash and block. Sew on button(s), if desired, using the yo in the ribbing as a buttonhole.

From the Designer

In the southern United States, Kudzu flows over the land like waves caught in time. When I lived in Virginia, I loved to watch the daily progress this “weed” made, overtaking trees and buildings alike. I tried to capture the impression of motion in this shawllette, using lace patterns that transition organically from one to the next.

This lacy shawllette can be worn over the shoulders with a fancy accent button or shawl pin to hold it in place. The full length version can also be wrapped twice around the neck for a more casual look. The midi length is just long enough to go once around the shoulders.

Rachel Henry, <http://remilyknits.wordpress.com>