

Classic Elite Yarns

Breast Cancer Awareness Scarf



Designed by: Heather Bagni

SIZES: One Size

Finished Measurements: 37" long x 5½" wide

MATERIALS:

Wool Bam Boo by **Classic Elite** (50% wool, 50% bamboo; 50 gram ball = approx 118 yards)

- 2 balls 1619 Pink Grapefruit

Needles

- One pair size US 6 and 9 (4 and 5.5 mm)

Or size to obtain gauge

GAUGE: 22 sts and 28 rows = 4" in Gazebo Lace using smaller needles. **Take time to save time, check your gauge.**

SPECIAL TERMS:

mb: (make bobble) [P1, k1, p1] in next st, [turn, k1, p1, k1] 2 times, pass second and third st over first st.

yo: Yarn over (1 st increased).

k2tog: Knit 2 sts together (1 st decreased).

sk2p: Slip 1 st knitwise, from the left needle to the right needle, k2tog, pass slipped st over knit st created by k2tog (2 sts decreased).

PATTERN STITCHES:

Gazebo Lace: (multiple of 10 sts + 1)

(also, see chart)

Foundation Row: (WS) P5, mb, *p9, mb; rep from * to last 5 sts, p5.

Row 1: (RS) K1, *yo, k3, sk2p, k3, yo, k1; rep from * across.

Row 2: Purl.

Row 3: P1, *k1, yo, k2, sk2p, k2, yo, k1, p1; rep from * across.

Rows 4 and 6: K1, *p9, k1; rep from * across.

Row 5: P1, *k2, yo, k1, sk2p, k1, yo, k2, p1; rep from * across.

Row 7: P1, *k3, yo, sk2p, yo, k3, p1; rep from * across.

Row 8: Purl.

Rows 9–16: Rep Rows 1–8

Row 17: P1, *k3, yo, sk2p, yo, k4; rep from * across.

Row 18: Purl.

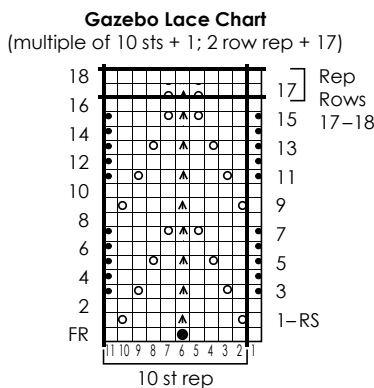
Rep Rows 17 and 18 for Gazebo Lace.

SCARF (make 2)

Using larger needles, CO 31 sts. **(WS) Begin Gazebo Lace;** work even until 24 rows have been completed, end WS row. **Change to smaller needles;** cont as est until piece meas 18½" from point of bobble, end WS row. BO all sts.

FINISHING

Block pieces to measurements. Sew BO ends together.



- Knit on RS, purl on WS
- Purl on RS, knit on WS
- Make Bobble (See Special Terms)
- Yarn over
- Sk2p (See Special Terms)

ABBREVIATIONS

- approx**—approximately
- BO**—bind off
- CO**—cast on
- cont**—continue
- est**—establish(ed)
- k**—knit
- k2tog**—See Special Terms
- mb**—See Special Terms
- meas**—measures
- p**—purl
- rep**—repeat
- RS**—right side
- sk2p**—See Special Terms
- st(s)**—stitch(es)
- WS**—wrong side
- yo**—See Special Terms