

# Classic Elite Yarns

## Ashlar Crochet Cardigan



Designed by: Robyn Chachula

**SIZES:** Small (Medium, Large, Extra Large)  
**Finished Measurements:** 32½ (37, 40½, 45½)"  
**To Fit measurements:** 32 (36, 39, 44)"

### MATERIALS:

**Princess** by **Classic Elite** (40% merino, 28% viscose, 10% cashmere, 15% nylon, 7% angora; 50 gram ball = approx 150 yards)  
 • 4 (5, 6, 7) balls Main Color (MC)—3495 Privileged Plum  
**Inca Alpaca** by **Classic Elite** (100% alpaca; 50 gram hank = approx 109 yards)  
 • 1 (1, 1, 2) hanks Color A—1117 Gold Finch  
 • 1 hank Color B—1120 Kentucky Teal  
 • 1 hank Color C—1105 Begonia

### Crochet Hook

• One size US H/8 (5 mm)

### Or size to obtain gauge

- Tapestry needle
- Stitch markers
- Three 5/8" buttons
- 12" of ½" grosgrain ribbon
- Three hook and eye closures
- Sewing thread to match the ribbon
- Sewing needle

**GAUGE:** 7SR (dc2tog, ch-2 groups) and 8 rows = 4¼" in Cluster Stitch Pattern. **Take time to save time, check your gauge.**

### SPECIAL TERMS:

**ch:** (chain) Wrap the yarn around the crochet hook (yo) and draw it through the loop on the hook to form the first chain. Rep this step as many times as instructed. (The loop on the hook is never included when counting the number of chains).

**sl st:** (slip stitch) Insert crochet hook in the indicated stitch, yo and draw through both the st and the loop on the hook.

**sc:** (single crochet) Insert crochet hook in indicated st, yo and pull up a loop; yo and draw through both loops on hook.

**dc:** (double crochet) Yo, insert hook into indicated st, yo and pull up a loop; [yo and draw through 2 loops on hook] 2 times.

**2dc-cl:** (half cluster) [Yo, insert hook into ch-sp indicated, yo, draw up a loop, yo, draw through 2 loops on hook] 2 times, yo, draw through rem loops on hook.

**3dc-cl:** (cluster) [Yo, insert hook into ch-sp indicated, yo, draw up a loop, yo, draw through 2 loops on hook] 3 times, yo, draw through rem loops on hook.

**dc2tog:** (double crochet 2 sts together) [Yo, insert hook into st indicated, yo draw up a loop, draw through 2 loops on hook] 2 times, yo, draw through all loops on hook.

**sc2tog:** (single crochet 2 sts together) Insert hook into st indicated, yo draw up a loop, insert hook into next st, yo, draw up a loop, yo, draw through all loops on hook.

### PATTERN STITCHES:

**Block Stitch Pattern:** (multiple of 3 ch + 4)

(also, see chart to the right)

Ch a multiple of 3 + 4.

**Row 1:** (Set-up Row): Dc in fourth ch from hook (skipped ch's count as 1 dc), dc in each ch across, turn.

**Row 2:** (WS) Ch 1, sc in first dc, ch 2, skip 2 dc, \*sc between next 2 dc, ch 2, skip next dc, rep from \* across, sc in tch, turn.

**Row 3:** (RS) Ch 3 (counts as dc), 3 dc in each ch-2 sp across, dc in last sc, turn. Rep Rows 2 and 3 for Block St Patt.

**Cluster Stitch Pattern:** (multiple of 3 ch + 2)

(also, see chart on page 2)

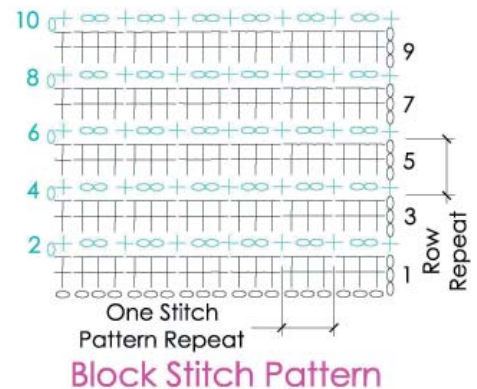
Ch a multiple of 3 + 2.

**Row 1:** Dc in third ch from hook (counts as a dc2tog), \*ch 2, dc2tog over next 3 ch (skip middle ch); rep from \* across to last 2 dc, ch 2, dc2tog in last 2 ch, turn.

**Row 2:** Ch 2, dc in first ch-2 sp (counts as dc2tog), \*ch 2, dc2tog in same ch-2 sp and next ch-2 sp; rep from \* across, ch 2, dc2tog in last ch-2 sp and tch, turn.

**Row 3:** Rep Row 2.

**Row 4:** Ch 3, \*3dc-cl in next ch-2 sp, ch2,



rep from \* across, 3dc-cl in last ch-2 sp, dc in tch, turn.

**Row 5:** Ch 4 (counts as dc, ch-1 sp), dc2tog in dc and ch-2 sp, \*ch 2, dc2tog in same ch-2 sp and next ch-2 sp; rep from\* across, ch 2, dc2tog in last ch-2 sp and tch, ch 1, dc in tch, turn.

## ABBREVIATIONS

**2dc-cl**—see Special Terms  
**3dc-cl**—see Special Terms  
**approx**—approximately  
**ch**—see Special Terms  
**cont**—continue  
**dc**—see Special Terms

**dc2tog**—see Special Terms  
**inc'd**—increased  
**MC**—Main Color  
**patt**—pattern  
**pm**—place marker  
**rem**—remain(ing)

**rep**—repeat  
**RR**—Row Repeat  
**RS**—Right Side  
**sc**—see Special Terms  
**sc2tog**—see Special Terms  
**sl st**—see Special Terms

**sp(s)**—space(s)  
**SR**—Stitch Repeat  
**st(s)**—stitch(es)  
**tch**—turning chain  
**WS**—Wrong Side  
**yo**—yarn over hook

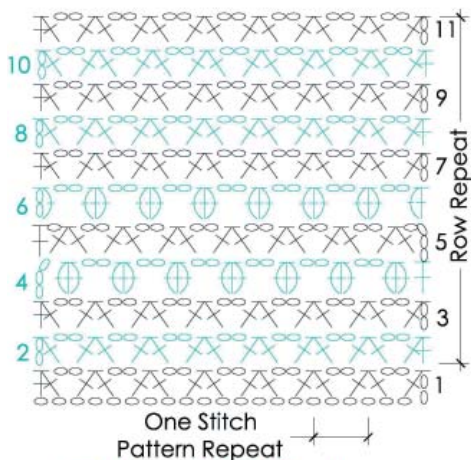


**Row 6:** Ch 2, dc in dc (counts as 2dc-cl), ch 2, skip ch-1 sp, \*3dc-cl in next ch-2 sp, ch 2; rep from \* across, 2dc-cl in last dc, turn.

**Row 7:** Ch 2, dc in first ch-2 sp (counts as dc2tog), \*ch 2, dc2tog in same ch-2 sp and next ch-2 sp; rep from \* across, ch 2, dc2tog in last ch-2 sp and tch, turn.

**Rows 8–11:** Rep Row 2.

Rep Rows 2–11 for Cluster St Patt.



### Cluster Stitch Pattern

#### NOTE:

1. The sweater is worked from the top down.

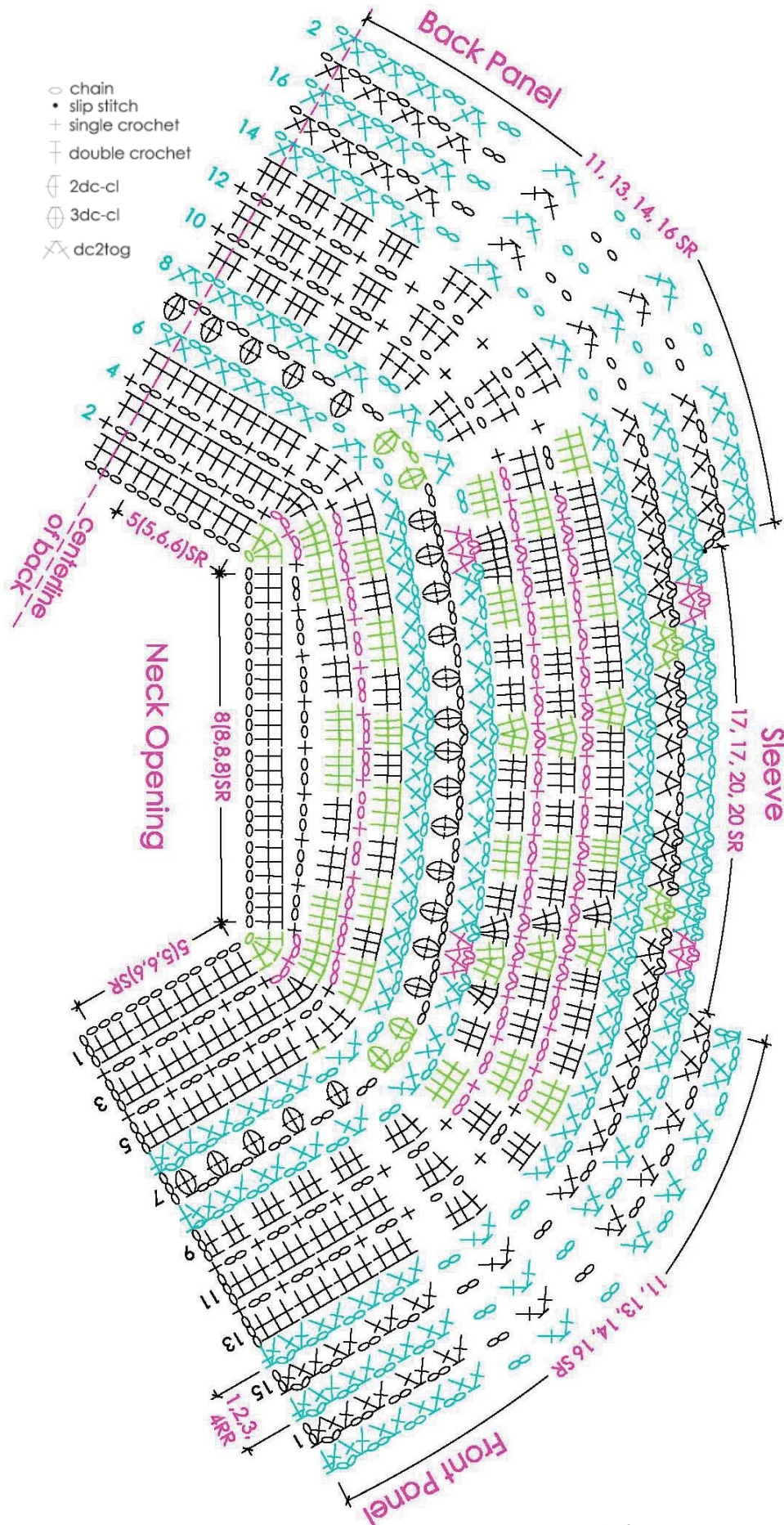
#### YOKE

(also, see chart to the right)

With Color A, ch 119 (119,131,131).

**Row 1:** (RS) Dc in fourth ch from hook (skipped ch's counts as 1 dc), dc in next 14 (14, 17,17) ch, 3 dc in next ch, place marker (pm) in second dc of the 3 just made for left front corner, dc in next 24 ch, 3 dc in next ch, pm in second dc of the 3 just made for left back corner, dc in next 33 (33, 39, 39) ch, 3 dc in next ch, pm in second dc of the 3 just made for right back corner, dc in next 24 ch, 3 dc in next ch, pm in second dc of the 3 just made for right front corner, dc in each ch to end. Fasten off Color A, turn—125, 125, 137, 137 dc; 37, 37, 41, 41 SR not including each set of the 3 corner dc.

**Row 2:** Join MC, ch 1, sc in dc, ch 2, skip 2 dc, [sc between next 2 dc, ch 2, skip next 2 dc] 4 (4, 5, 5) times, sc between next 2 dc, ch 2, skip 1 dc, sc in next dc replacing marker into this sc, ch 2, skip next dc, [sc between next 2 dc, ch 2, skip next 2 dc] 8 times, sc between next 2 dc, ch 2, skip 1 dc, sc in next dc replacing marker into this sc, ch 2, skip next dc, [sc between next 2 dc, ch 2, skip next 2 dc] 11 (11, 13, 13) times, sc between next 2 dc, ch 2, skip 1 dc, sc in next dc replacing marker into this sc, ch 2, skip next dc, [sc between next 2 dc, ch 2, skip next 2 dc] 8 times, sc between next 2 dc, ch 2, skip 1 dc, sc in next dc replacing marker into this sc, ch 2, skip next dc [sc between next 2 dc, ch 2, skip next 2 dc] 5 (5, 6, 6) times, sc in tch, turn—45 (45, 49, 49) ch-2 sp's and SR; 6 (6, 7, 7) ch-2 sps on each Front; 10 ch-2 sps on each Sleeve; 13 (13, 15, 15) ch-2 sps on Back.





**Row 3:** Join Color B, \*work Row 3 of Block St Patt to next marker, 4dc in next ch-2 sp, replace marker in first of these 4 dc, 4 dc in next ch-2 sp, [3dc in next 2 ch-2 sp, 4 dc in next 2 ch-2 sp] 2 times, replace marker in last dc, rep from \* 1 more time, cont in Block St Patt to end. Fasten off Color B, turn—149 (149, 161, 161) dc; 19 (19, 22, 22) dc on each Front; 36 dc on each sleeve; 39 (39, 45, 45) dc on Back.

**Row 4:** Join MC, work Row 2 of Block St Patt to end; **and at the same time**, replace marker in the sc worked closest to the marked dc. Fasten off MC, turn—49 (49, 53, 53) ch-2 sps and SR; 6 (6, 7, 7) ch-2 sps on each Front; 12 ch-2 sps on each Sleeve; 13 (13, 15, 15) ch-2 sps on Back.

**Row 5:** Join Color A, work Row 3 of Block St Patt to marker, 4 dc in next ch-2 sp, replace marker in first dc of these 4 dc, [3 dc in next ch-2 sp, 4 dc in next ch-2 sp] 5 times, 3 dc in next ch-2 sp, replace marker in last dc, rep from \* 1 time, cont in Row 3 of Block St Patt to end. Fasten off Color A, turn—161 (161, 173, 173) dc; 19 (19, 22, 22) dc on each Front; 42 dc on each sleeve; 39 (39, 45, 45) dc on Back.

**Row 6:** Join MC, ch 2, skip first dc, dc between next 2 dc (counts as dc2tog), ch 2, dc2tog over next 3 dc (in same sp, skip next dc, and between next 2 dc), \*ch 2, dc2tog over next 4 dc (in same sp, skip next 2 dc, and between next 2 dc), rep from \* to last 4 dc, ch 2, dc2tog over next 3 dc (in same sp, skip next dc, and between next dc), ch 2, dc2tog in same sp and tch; **and at the same time**, replace markers in the ch-2 sp above previous row's marker. Fasten off MC, turn—55 (55, 59, 59) dc2tog; 7 (7, 8, 8) dc2tog on each Front; 14 dc2tog on each Sleeve; 13 (13, 15, 15) dc2tog on Back.

**Row 7:** Join Color C, \*work Row 4 of Cluster St Patt to marker, [3dc-cl, ch 2, 3dc-cl] in marked ch-2 sp, replace marker in ch-2 sp just made, rep from \* 3 more times, cont in Row 4 of Cluster St Patt to end. Fasten off Color C, turn—58 (58, 62, 62) 3dc-cl and SR; 7 (7, 8, 8) 3dc-cl on each Front; 15 3dc-cl on each sleeve; 14 (14, 16, 16) 3dc-cl on Back.

**Row 8:** Join MC, \*work Row 5 of Cluster St Patt to 2 ch-2 sp's past right front marker replacing marker in the ch-2 sp above previous row's marker, dc2tog in same ch-2 sp and next 3dc-sl, ch 2, dc2tog in same 3dc-cl and next ch-2 sp, cont Row 5 of Cluster St Patt to 3 ch-2 sps before right back marker, dc2tog in same ch-2 sp and next 3dc-sl, ch 2, dc2tog in same 3dc-cl and next ch-2 sp, rep from \* 1 time working to 2 ch-2 sps past left back marker, then to 2 ch-2 sps before left front marker, work Row 5 to end. Fasten off MC, turn—60 (60, 64, 64) dc2tog; 7 (7, 8, 8) dc2tog on each Front; 16 dc2tog on each sleeve; 14 (14, 16, 16) dc2tog on Back.

**Row 9:** Join Color A, ch 3 (counts as dc), dc in ch-1 sp, 2 dc in next ch-sp, 3 dc in each ch-2 sp to marker, 4 dc in marked ch-2 sp, replace



marker in last dc, [3 dc in next 2 ch-2 sps, 4 dc in next ch-2 sp] 5 times, replace marker in last dc, 3dc in each ch-2 sp ending after right back marked ch-2 sp, 4 dc in next ch-2 sp, replace marker in first dc of these 4 dc, [3 dc in next 2 ch-2 sps, 4 dc in next ch-2 sp] 5 times, replace marker in first dc of last 4 dc, 3 dc in each ch-2 sp to last ch-2 sp, 2 dc in last ch-2 sp, dc in ch-1 sp, dc in third ch of tch. Fasten off Color A, turn—191 (191, 203, 203) dc; 23 (23, 26, 26) dc on each Front; 50 dc on each Sleeve; 45 (45, 51, 51) dc on Back.

**Row 10:** Join MC, work Row 2 of Block St Patt to marker, replace marker in sc closest to marked dc of previous row, rep from \* across, cont in row 2 of Block St Patt to end. Fasten off MC, turn—63 (63, 67, 67) ch-2 sps; 7 (7, 8, 8) ch-2 sps on each Front; 17 ch-2 sps on each Sleeve; 15 (15, 17, 17) ch-2 sps on Back.

**Row 11:** Join Color B, \*work Row 3 of Block St Patt to marker, 4 dc in next ch-2 sp, replace marker in first dc of these 4, [3 dc in next 2 ch-2 sps, 4 dc in next ch-2 sp] 5 times, 3 dc in next ch-2 sp, replace marker in last dc, work Row 3 of Block St Patt to next marker, 3 dc in next ch-2 sp, replace marker in first dc of these 3, 4 dc in next ch-2 sp, [3 dc in next 2 ch-2 sps, 4 dc in next ch-2 sp] 5 times, replace marker in last dc, work Row 3 of Block St Patt to end. Fasten off Color B, turn—203 (203, 215, 215) dc; 22 (22, 25, 25) dc on each Front; 57 dc on each Sleeve; 45 (45, 51, 51) dc on Back.

**Row 12:** Rep Row 10—67 (67, 71, 71) ch-2 sps; 7 (7, 8, 8) ch-2 sps on each Front; 19 ch-

sps on each Sleeve; 15 (15, 17, 17) ch-2 sps on Back.

**Row 13:** Join Color A, \*work Row 3 of Block St Patt to marker, 4 dc in next ch-2 sp, replace marker in first dc of these 4, [3 dc in next 3 ch-2 sps, 4 dc in next ch-2 sp, 3 dc in next 2 ch-2 sps, 4 dc in next ch-2 sp] 2 times, 3 dc in next 3 ch-2 sps, 4 dc in next ch-2 sp, replace marker in last dc, rep from \* 1 more time, cont in Row 3 of Block St Patt to end. Fasten off Color A turn—215 (215, 227, 227) dc; 22 (22, 25, 25) dc on each Front; 63 dc on each Sleeve; 45 (45, 51, 51) dc on Back.

**Row 14:** Join MC, ch 2, skip first dc, dc between next 2 dc (counts as dc2tog), ch 2, dc2tog over next 3 dc (in same sp, skip next dc, and between next 2 dc), \*ch 2, dc2tog over next 4 dc (in same sp, skip 2 dc, and between next 2 dc); rep from \* to last 4 dc, dc2tog over next 3 dc (in same sp, skip next dc, and between next 2 dc), ch 2, dc2tog in same sp and tch, turn. With RS facing, replace markers in 15 (15, 16, 16)<sup>th</sup> sp from left front, and in 20<sup>th</sup> (20<sup>th</sup>, 21<sup>st</sup>, 21<sup>st</sup>) sp from left front; then replace markers in 16 (16, 17, 17)<sup>th</sup> sp from right front, and in 21<sup>st</sup> (21<sup>st</sup>, 22<sup>nd</sup>, 22<sup>nd</sup>) sp from right front—71 (71, 75, 75) dc2tog; 70 (70, 74, 74) ch-2 sps.

**Row 15:** \*Work Row 2 of Cluster St Patt to 2 ch-2 sps before marker, dc2tog in same ch-2 sp and next dc2tog, ch 2, replace marker in ch-2 sp just made, dc2tog in same dc2tog and next ch-2 sp, work Row 2 of Cluster St Patt to the ch-2 sp after next marker, dc2tog

in same ch-2 sp and dc2tog, ch 2, replace marker in ch-2 sp just made, dc2tog in same dc2tog and next ch-2 sp; rep from \* 1 more time, cont Row 2 of Cluster St Patt to end, turn—4 dc2tog inc'd; 4 ch-2 sps inc'd. Rep previous Row 1 (3, 5, 7) more times, ending after a WS row—78 (86, 98, 106) ch-2 sp; 79 (87, 99, 107) dc2tog. **Divide for Armholes:**

#### LEFT FRONT

**Row 1:** (RS) Ch 2, dc in first ch-2 sp (counts as dc2tog), \*ch 2, dc2tog in same ch-2 sp and next ch-2 sp, rep from \* 10 (12, 13, 15) more times, turn, leave remaining sts unworked—12 (14, 15, 17) dc2tog on Left Front.

**Row 2:** Work Row 2 of Cluster St Patt to end. Do not fasten off, turn. Set yarn aside for use on Body.

#### BACK

With RS facing, skip 17 (17, 21, 21) dc2tog from Row 1 of Left Front. Join another ball of MC with sl st to next ch-2 sp.

**Row 1:** (RS) Ch 2, dc in next ch-2 sp (counts as dc2tog), \*ch 2, dc2tog in same ch-2 sp and next ch-2 sp, rep from \* 20 (24, 26, 30) more times, turn, leave remaining sts unworked—21 (25, 27, 31) dc2tog on Back.

**Row 2:** Work Row 2 of Cluster St Patt to end. Fasten off, turn.

#### RIGHT FRONT

With RS facing, skip 17 (17, 20, 20) dc2tog from Row 1 of Back. Join MC with sl st to next ch-2 sp.

**Row 1:** (RS) Ch 2, dc in next ch-2 sp (counts as dc2tog), \*ch 2, dc2tog in same ch-2 sp and next ch-2 sp, rep from \* to last ch-2 sp, dc2tog in last ch-2 sp and dc, turn—12 (14, 15, 17) dc2tog on Right Front.

Row 2: Work Row 2 of Cluster St Patt to end. Fasten off, turn.

#### BODY

Cont using yarn attached to Left Front.

**Row 1:** (RS) Work Row 4 of Cluster St Patt to last ch-2 sp before armhole opening, 3dc-cl in last ch-2 sp on Left Front, loosely ch 11 (11, 14, 14), skip armhole opening, 3dc-cl in first ch-2 sp on Back, cont Row 4 of Cluster St Patt to last ch-2 sp before next armhole opening, 3dc-cl in last ch-2 sp on Back, loosely ch 11 (11, 14, 14), skip armhole opening, 3dc-cl in first ch-2 sp on Right Front, cont Row 4 of Cluster St Patt to end, turn—42 (50, 54, 62) 3dc-cl; 11 (13, 14, 16) 3dc-cl on each Front; 20 (24, 26, 30) 3dc-cl on Back.

**Row 2:** \*\*Work Row 5 of Cluster St Patt to last ch-2 sp before underarm ch's, ch 2, dc2tog in same ch-2 sp and first ch, \*ch 2, dc2tog in same ch, skip 1 ch and in next ch; rep from \* 4 (4, 6, 6) more times, dc2tog in same ch and next ch-2 sp; rep from\*\* 1 more time—52 (60, 66, 74) dc2tog; 51 (59, 65, 73) ch-2 sps. Work Rows 6–11 of Cluster St Patt, then Rows 2–11 of Cluster St Patt, then work rows 2–7 of Cluster St Patt 1 more time, turn.

#### EDGING

**Row 1:** Ch 1, sc in dc2tog, \*2 sc in ch-2 sp, sc in dc2tog, rep from \* to end, turn—154 (178, 202, 226) sc.

**Row 2:** Ch 1, sc in each sc across, turn.

Rep Row 2 three more times, fasten off, weave in ends.

#### FINISHING

Block piece to measurements.

**Arm Bands:** With RS facing, join MC to sleeve seam with sl st.

**Rnd 1:** Ch 1, sc evenly around arm opening, sl st to first sc, turn.

**Rnd 2:** Ch 1, sc in each sc around, sl st to first sc, turn.

Rep Rnd 2 one more time, fasten off.

#### Neck and Body Edging

Join MC to edge of body opening at bottom edge with sl st.

**Row 1:** Ch 1, sc evenly up body opening edge to neck, 3 sc at top of edge, sc evenly around neck in unworked loops of foundation ch, 3 sc in last ch, sc evenly down opposite edge, turn.

**Row 2:** Ch 1, sc in each sc around, 3 sc in outside corners of neck, sc2tog in inside corners of neck, turn.

Rep Row 2 three more times, fasten off.

#### FINISHING

Sew buttons to RS of Right Front, see photo for placement. Cut grosgrain ribbon in half. Fold ends down 1/2" and pin to RS of Left Front and WS of Right Front. Backstitch ribbon to cardigan with matching sewing thread and needle. Sew 1 end of each hook and eye closure to ribbon spacing them evenly along ribbon.

