

Classic Elite Yarns

Ariosa Colorful Cables Hat

Designed by: Philippa Eccles

SIZES: One Size

Finished Circumference: approx 20"
unstretched; 24¼" stretched

MATERIALS:

Ariosa by **Classic Elite** (90% extrafine merino, 10% cashmere; 50 gram ball = approx 87 yards)

- 2 balls Color A—4827 Sangria
- 1 ball Color B—4858 Lipstick
- 1 ball Color C—4881 Chamomile
- 1 ball Color D—4810 Jet Blue

Needles:

- One pair size US 10½ (6.5 mm)

Or size to obtain gauge

- One set double pointed needles (dpn) US size 9 (5.5 mm)
- Stitch marker
- Cable needle (cn)
- Tapestry needle
- Small amount of stuffing (to fill pom-pom)

Gauge: 14 sts and 22 rows = 4" in Stockinette Stitch with larger needles; 10 sts in Cable Panels = 2" stretched. **Take time to save time, check your gauge.**

SPECIAL TERMS:

C6F: Slip 3 sts to cn, hold in front; k3; k3 from cn.
k1-f/b: Knit into the front loop, then the back loop of next st (1 st increased).

k2tog: Knit 2 sts together (1 st decreased).

p2tog: Purl 2 sts together (1 st decreased).

PATTERN STITCHES:

1 x 1 Rib: (multiple of 2 sts)

Row 1: (RS) *K1, p1; rep from * to end.

Row 2: Knit the knit sts and purl the purl sts as they face you.

Rep Row 2 for 1 x 1 Rib.

Stockinette Stitch (St st):

Straight—Knit on RS, purl on WS.

Circular—Knit every rnd.

BD Cable Panel: (panel of 10 sts)

(also, see chart on page 2)

Row 1: (RS) With Color A, p2; with Color B, k3; with Color D, k3; with Color A, p2.

Row 2 and all WS rows: Using colors as est, knit the knit sts and purl the purl sts as they face you.

Row 3: With Color A, p2; with Colors B and D, C6F; with Color A, p2.

Row 5: With Color A, p2; with Color D, k3; with Color B, k3; with Color A, p2.

Row 7: With Color A, p2; with Colors D and B,



C6F, with Color A, p2.

Row 8: Rep Row 2.

Rep Rows 1–8 For BD Cable Panel.

CD Cable Panel: (panel of 10 sts)

(also, see chart on page 2)

Row 1: (RS) With Color A, p2; with Color C, k3; with Color D, k3; with Color A, p2.

Row 2 and all WS rows: Using colors as est, knit the knit sts and purl the purl sts as they face you.

Row 3: With Color A, p2; with Colors C and D, C6F; with Color A, p2.

Row 5: With Color A, p2; with Color D, k3; with Color C, k3; with Color A, p2.

Row 7: With Color A, p2; with Colors D and C, C6F, with Color A, p2.

Row 8: Rep Row 2.

Rep Rows 1–8 For CD Cable Panel.

CB Cable Panel: (panel of 10 sts)

(also, see chart on page 2)

Row 1: (RS) With Color A, p2; with Color C, k3; with Color B, k3; with Color A, p2.

Row 2 and all WS rows: Using colors as est, knit the knit sts and purl the purl sts as they face you.

ABBREVIATIONS

approx—approximately

beg—begin(ning)

BO—Bind Off

C6F—see Special Terms

cn—cable needle

CO—Cast On

dec—decrease

dpn(s)—double pointed needle(s)

est—establish(ed)

k—knit

k1-f/b—see Special Terms

k2tog—see Special Terms

meas—measures

p—purl

p2tog—see Special Terms

pc—piece

pm—place marker

rem—remain(ning)

rep—repeat

rnd(s)—round(s)

RS—Right Side

st(s)—stitch(es)

St st—Stockinette Stitch

WS—Wrong Side

Row 3: With Color A, p2; with Colors C and B, C6F; with Color A, p2.
 Row 5: With Color A, p2; with Color B, k3; with Color C, k3; with Color A, p2.
 Row 7: With Color A, p2; with Colors B and C, C6F, with Color A, p2.
 Row 8: Rep Row 2.
 Rep Rows 1–8 For CB Cable Panel.

DB Cable Panel: (panel of 10 sts)

(also, see chart)

Row 1: (RS) With Color A, p2; with Color D, k3; with Color B, k3; with Color A, p2.
 Row 2 and all WS rows: Using colors as est, knit the knit sts and purl the purl sts as they face you.
 Row 3: With Color A, p2; with Colors D and B, C6F; with Color A, p2.
 Row 5: With Color A, p2; with Color B, k3; with Color D, k3; with Color A, p2.
 Row 7: With Color A, p2; with Colors B and D, C6F, with Color A, p2.
 Row 8: Rep Row 2.
 Rep Rows 1–8 For DB Cable Panel.

NOTES:

1. Join new colors as needed; change colors using intarsia method; see our online tutorial: <http://www.classiceliteyarns.com/WebLetter/Stitches/Intarsia/Intarsia.php>
2. When working cables, keep the yarn for the sts on the cn in the back of the other color as the sts are being worked.

HAT

With Color A and larger needles, CO 100 sts. (RS) **Begin 1 x 1 Rib**; work even for 1", end after a WS row. **Est Patt:** (RS) With Color A, work 10 sts in St st; work 10 sts in BD Cable

Panel; with Color A, work 10 sts in St st; work 10 sts in CD Cable Panel; with Color A, work 10 sts in St st; work 10 sts in CB Cable Panel; with Color A, work 10 sts in St st; work 10 sts in DB Cable Panel; with Color A, work 10 sts in St st; work 10 sts in CD Cable Panel. Work even as est for 23 more rows, end after WS Row 8 of Cable Panels. **Shape Crown:**

Dec Row 1: (RS) *[Work 3 sts in St st, k2tog] 2 times, work 10 sts in Cable Panel as est; rep from * to end—90 sts rem. (WS) Work 1 row as est.

Dec Row 2: (RS) *[Work 2 sts in St st, k2tog] 2 times, work 10 sts in Cable Panel as est; rep from * to end—80 sts rem. (WS) Work 1 row as est.

Dec Row 3: (RS) *[Work 1 st in St st, k2tog] 2 times, work 10 sts in Cable Panel as est; rep from * to end—70 sts rem. (WS) Work 1 row as est.

Dec Row 4: (RS) *[K2tog] 2 times, work 10 sts in Cable Panel as est; rep from * to end—60 sts rem. (WS) Work 1 row as est.

Dec Row 5: (RS) * K2tog, p2tog, k2tog, k2, k2tog, p2tog; rep from * to end—35 sts rem. (WS) Work 1 row in colors as est, knit the knit sts and purl the purl sts as they face you.

Dec Row 6: (RS) K1, p1, [k2tog] 2 times, *p1, k1, p1, [k2tog] 2 times; rep from * to last st, p1—25 sts rem. (WS) Work 1 row in colors as est, knit the knit sts and purl the purl sts as they face you.

Change to Color A; Dec Row 7: (RS) K1, p1, k2tog, *p1, k1, p1, k2tog; rep from * to last st, p1—20 sts rem. (WS) Purl across.

Dec Row 8: (RS) K2tog across—10 sts rem. (WS) Purl across.

Dec Row 9: (RS) K2tog across—5 sts rem. Break yarn leaving approx 8" tail. Thread

tail onto tapestry needle and pull through remaining sts 2 times. Tug tightly.

FINISHING

Block pc and sew seam. **Pom-Pom:** With dpn and Color A, CO 6 sts, place marker for beginning of round and join to work in-the-round. **Inc Rnd 1:** K1-f/b around—12 sts.

Inc Rnd 2: *K1, k1-f/b; rep from * around—18 sts. **Begin St st;** work 2 rnds even. **Change to Color B;** work 2 rnds. **Change to Color C;** work 2 rnds. **Change to Color D;** work 2 rnds even.

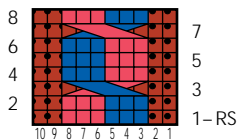
Change to Color A; work 2 rnds.

Dec Rnd 1: *K1, k2tog; rep from * around—12 sts rem.

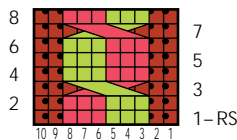
Dec Rnd 2: K2tog around—6 sts rem. Break yarn leaving approx 6" tail. Thread tail onto tapestry needle and pull through rem sts 2 times. Tug tightly. Stuff Pom-Pom through CO opening and sew CO edge onto top of hat.



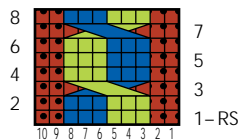
DB Cable Chart
(panel of 10 sts; 8 row rep)



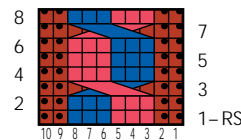
CB Cable Chart
(panel of 10 sts; 8 row rep)













CD Cable Chart
(panel of 10 sts; 8 row rep)



BD Cable Chart
(panel of 10 sts; 8 row rep)



Work in Intarsia in colors shown

- Knit on RS, purl on WS
- Purl on RS, knit on WS
-  Slip 3 Color B sts to cn, hold in front; bring Color B yarn to back; with Color D, k3; with Color B, k3 from cn
-  Slip 3 Color D sts to cn, hold in front; bring Color D yarn to back; with Color B, k3; with Color D, k3 from cn
-  Slip 3 Color C sts to cn, hold in front; bring Color C yarn to back; with Color D, k3; with Color C, k3 from cn
-  Slip 3 Color D sts to cn, hold in front; bring Color D yarn to back; with Color C, k3; with Color D, k3 from cn
-  Slip 3 Color C sts to cn, hold in front; bring Color C yarn to back; with Color B, k3; with Color C, k3 from cn
-  Slip 3 Color B sts to cn, hold in front; bring Color B yarn to back; with Color C, k3; with Color B, k3 from cn
-  Color A—4827 Sangria
-  Color B—4858 Lipstick
-  Color C—4881 Chamomile
-  Color D—4810 Jet Blue