

Classic Elite Yarns

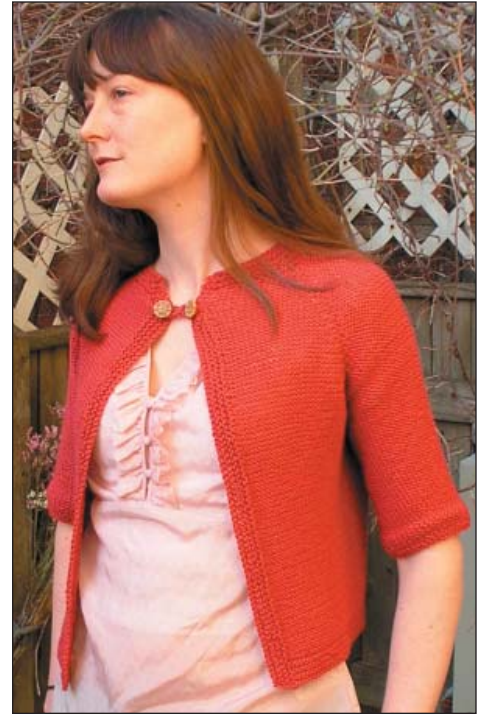
Allegoro Loose Knit Cardi

Allegoro

70% organic cotton, 30% linen

Allegoro, one of the yarns in our Verde line (also see Web-Letters 86 and 87), is a blend of organically-grown cotton and linen. In keeping with its mostly earth-friendly fiber content, Allegoro is dyed using non-toxic dyes. As you might expect, limiting the kinds of chemicals that can be used to dye and set a yarn's color also has an effect on the intensity of the final outcome.

The dyes and chemicals used to color Allegoro are GOTS certified. (You can find out more about GOTS standards here: <http://www.global-standard.org>.) These dyes yield beautiful colors with the soft, almost transparent, quality of watercolors that remind me of tinted photographs. They're the kind of colors that are easy to wear and that you'll never grow tired of.



Allegoro Loose Knit Cardi

Designed by: Cecily Glowik MacDonald

SIZES:

Small (Medium, Large, Extra Large, 2X Large)

Finished Measurements:

36³/₄ (40¹/₄, 43³/₄, 47¹/₄, 51")

MATERIALS:

Allegoro by Classic Elite (70% organic cotton, 30% linen; 50 gram ball = approx 152 yards)

- 4 (5, 5, 6, 7) balls 5655 Picante

Needles

- One pair size US 8 (5 mm)
- One set of five double pointed needles (dpns) size US 8 (5 mm)

Or size to obtain gauge

- Eight stitch markers
- Stitch holders or waste yarn
- Two double pointed needles size US 4 (3.5 mm) for I-cord closure
- Two ³/₄" buttons

Gauge: 18 sts and 23 rows = 4" in Reverse Stockinette Stitch with larger needles. **Take time to save time, check your gauge.**

SPECIAL TERMS:

k1-f/b: Knit into the front loop, then the back loop of next st (1 st increased).

m1: (make 1) Insert LH needle under horizontal strand between st just worked and next st, from the front to the back, knit through the back loop (1 st increased).

k2tog: Knit 2 sts together (1 st decreased).

PATTERN STITCHES:

Reverse Stockinette Stitch (Rev St st):

Straight—Knit on WS, purl on RS.

Circular—Purl all sts every rnd.

Garter Stitch (Gtr St):

Straight—Knit all sts, every row.

Circular—Rnd 1: Knit.

Rnd 2: Purl.

Rep Rnds 1 and 2 for Circular Gtr St.

I-Cord: *Knit 1 row; without turning the work, slide the sts to RH end of needle, pull yarn tightly from the end of the row, (behind the sts); rep from * until cord meas desired length.

NOTE: Cardi is worked top down and the raglan inc's are worked on WS rows. Single sts between markers at raglan lines are counted as sleeve sts.

YOKE

With larger needles, CO 13 (13, 14, 15, 16) sts, place marker (pm), CO 1 st, pm, CO 6 (6, 8, 10, 12) sts, pm, CO 1 st, pm, CO 30 (30, 32, 34, 36) sts, pm, CO 1 st, pm, CO 6 (6, 8, 10, 12) sts, pm, CO 1 st, pm, CO 13 (13, 14, 15, 16) sts—72 (72, 80, 88, 96) sts. **Begin Rev St st and Shape Raglan, Inc Row 1:** (WS) *Work to 1 st before marker, k1-f/b, slip marker, k1, slip marker, k1-f/b, rep from * 3 more times, work to end—80 (80, 88, 96, 104) sts. (RS) Work 1 row even.

Inc Row 2: (WS) *Work to 1 st before marker, m1, [k1, slip marker] 2 times, m1, rep from * 3 more times, work to end—8 sts inc'd. Rep yoke inc row 2 EOR (on WS rows) 21 (25, 28, 31, 34) more times—256 (288, 320, 352, 384) sts. If necessary, work even until pc meas 8¹/₄ (9¹/₄, 10¹/₂, 11¹/₂, 12¹/₂)" from beg (meas along raglan line). **Divide:** (RS) Work 36 (40, 44, 48, 52) sts for left front, removing markers place the following 54 (62, 70, 78, 86) unworked sts on holder or waste yarn for left sleeve, CO 4 sts (for underarm), work 76 (84, 92, 100, 108)

ABBREVIATIONS

approx—approximately

BO—bind off

BOR—beginning of round

CO—cast on

dpn(s)—double pointed needle(s)

EOR—every other row

Gtr St—Garter Stitch

inc('d)—increase(d)

k—knit

k1-f/b—see Special Terms

k2tog—see Special Terms

m1—see Special Terms

meas—measures

pc(s)—piece(s)

pm—place marker(s)

rem—remain(ning)

rep—repeat

Rev St st—Reverse Stockinette Stitch

rnd(s)—round(s)

RS—right side

st(s)—stitch(es)

WS—wrong side



sts for back, removing markers place the following 54 (62, 70, 78, 86) unworked sts on holder or waste yarn for right sleeve, CO 4 sts (for underarm), work 36 (40, 44, 48, 52) sts for right front—156 (172, 188, 204, 220) sts rem.

BODY

Work even until pc meas 8¹/₄" from divide, end after a RS row. **Change to Gtr St**; work even for 1", end after a RS row. (WS) BO all sts knitwise.

SLEEVE (work twice)

Divide 54 (62, 70, 78, 86) sts for 1 sleeve as evenly as possible over 4 larger dpns. With empty dpn, pick up and knit 4 sts in the 4 underarm sts of the body, pm for BOR, join to work in the rnd—58 (66, 74, 82, 90) sts. **Begin Circular Rev St st**; work even until pc meas 6" from divide. **Change to Circular Gtr St**; work even for 1", end after a purl rnd. BO all sts knitwise.

FINISHING

Block pc to measurements. **Right Band:** With larger needles and RS facing, pick up and knit 74 (79, 84, 88, 93) sts along right front edge. **(WS) Begin Gtr St**; work 6 rows, end after a RS row. (WS) BO all sts knitwise. Rep for left front band. **Collar:** With larger needles and RS facing, pick up and knit 80 (80, 88, 96, 104) sts evenly around neck including over front bands as follows: 4 sts over right front band, 13 (13, 14, 15, 16) sts over right front, 8 (8, 10, 12, 14) sts over right sleeve, 30 (30, 32, 34, 36) sts over back, 8 (8, 10, 12, 14) sts over left sleeve, 13 (13, 14, 15, 16) sts over left front, 4 sts over left front band. **(WS) Begin Gtr St and Dec Row:** K1 (1, 0, 0, 0), *k8, k2tog; rep from * to last, 9 (9, 8, 6, 4) sts, work to end—73 (73, 80, 87, 94) sts rem. (RS) Work 3 rows even, end after a RS row. **Dec Row 2:** (WS) K1 (1, 0, 0, 0) sts, *k7, k2tog; rep from * to last, 9 (9, 8, 6, 4) sts, work to end—66 (66, 72, 78, 84) sts rem. (RS) Work 3 rows even, end after a RS row. (WS) BO all sts knitwise. **I-Cord Closure:** With smaller dpns, CO 3 sts. **Begin I-Cord**; work until pc meas 5" from beg. BO all sts. Seam CO edge to BO edge. Twist once in center of ring, forming an infinity symbol, and tack in place (see photo). Attach 1 button to each front 1/2" below neck band. Slip 1 side of I-Cord closure over each button.

