

SOFT LINEN VEST

designed by Tonia Barry

Classic Elite Yarns

SOFT LINEN

Soft Linen is the perfect yarn for warmer days and cool nights. The alpaca makes a beautiful halo, the linen gives it a crisp and firm hand, and the wool provides stability and its own level of softness.

SKILL LEVEL

Intermediate

SIZES

S (M, L, XL, 2XL). Shown in size S.

FINISHED MEASUREMENTS

Bust: 35¼ (38¼, 42, 45, 48¼)"

Length: 22¼ (23¼, 24¼, 25¼, 25¾)"

YARN

Soft Linen by **Classic Elite Yarns**

(35% linen, 35% wool, 30% baby alpaca; 50 g = approx 137 yards)

7 (9, 10, 11, 12) balls 2292 Lupine

NEEDLES

Knitting needles in size US 4 (4.0 mm)

or size to obtain gauge.

Circular knitting needle (24" or longer)

in size US 6 (4.0 mm) for front trim.

OTHER MATERIALS

Removable stitch markers

Stitch holders or waste yarn

GAUGE

22 sts and 30 rows = 4" in Stockinette

Stitch; 38 sts = 4½" in Cable Pattern.

Take time to save time, check your gauge.



Soft Linen Vest © 2015 Tonia Barry & Classic Elite Yarns

originally published in Issue 415 of the CEY Web-Letter • www.classiceliteyarns.com • blog.classiceliteyarns.com • @CEYarns

This pattern is specifically for private use only. All commercial uses involving reproduction of this pattern or duplication of this piece are prohibited unless specifically licensed in writing by copyright owner. For more information, visit classiceliteyarns.com/newsletter.php.

page 1 of 4



Find us online!

Classic Elite Yarns



ABBREVIATIONS

- beg:** begin(ning)
BO: bind off
cn: cable needle
CO: cast on
dec('d): decrease(d)
est: establish(ed)
k: knit
p: purl
pc(s): piece(s)
pm: place marker
k2tog: Knit 2 sts together (1 st decreased).
meas: measure(s)
rep(s): repeat(s)
RH: right hand
RS: right side
sl: slip
st(s): stitch(es)
ssk: (slip, slip, knit) Slip 2 sts, 1 at a time, knitwise to the RH needle; return sts to LH needle in turned position and knit them together through the back loops (1 st decreased).
tbl: through the back loop.
WS: wrong side
yo: yarn over (1 st increased)

PATTERN STITCHES

Garter Stitch (Gtr St)

Knit all sts, every row.

Stockinette Stitch (St st)

Knit on RS, purl on WS.

Three Needle Bind Off Method

Slip the sts from holders onto each of 2 needles; with the RS of garment pcs together (to form ridge on inside of garment), hold the needles parallel. With a third needle knit the first st of front and back needles together, *knit next st from each needle together, (2 sts on RH needle), BO 1 st; rep from * until all sts are BO.

Cable Pattern (multiple of 12 sts + 2)

(also, see chart)

T5F-tbl: Slip 3 sts to cn, hold in front; p2; then k1-tbl, p1, k1-tbl from cn.

T5B-tbl: Slip 2 sts to cn, hold in back; k1-tbl, p1, k1-tbl; then p2 from cn.

C6F-tbl: Slip 3 sts to cn, hold in front; k1-tbl, p1, k1-tbl; then k1-tbl, p1, k1-tbl from cn.

C5B-tbl: Slip 2 sts to cn, hold in back; k1-tbl, p1, k1-tbl; then k2 from cn.

C5F-tbl: Slip 3 sts to cn, hold in front; k2; then k1-tbl, p1, k1-tbl from cn.

Rows 1, 3 and 5 (RS): P2, *k1-tbl, p1, k1-tbl, yo, ssk, k2tog, yo, k1-tbl, p1, k1-tbl, p2; rep from * across.

Rows 2, 4 and 6 (WS): K2, *p1-tbl, k1, p1-tbl, p4, p1-tbl, k1, p1-tbl, k2; rep from * across.

Row 7: P2, *T5F-tbl, T5B-tbl, p2; rep from * across.

Rows 8 and 10: K2, *k2, p1-tbl, k1, p2-tbl, k1, p1-tbl, k4; rep from * across.

Row 9: P2, *p2, C6F-tbl, p4; rep from * across.

Row 11: P2, *C5B-tbl, C5F-tbl, p2; rep from * across.

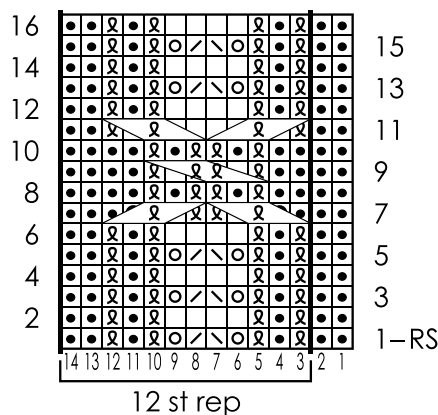
Rows 12, 14 and 16: Rep row 2.

Rows 13 and 15: Rep row 1.

Rep rows 1–16 for Cable Pattern.

Cable Pattern

(multiple of 12 sts + 2; 16 row rep)



- knit on RS, purl on WS
- purl on RS, knit on WS
- k1-tbl on RS, p1-tbl on WS
- yo
- ssk
- k2tog
- T5F-tbl
- T5B-tbl
- C6F-tbl
- C5B-tbl
- C5F-tbl



BACK

CO 105 (113, 123, 131, 141) sts.

Knit 2 rows.

Beg with a RS row, work even in St st until pc meas 2½" from beg, ending with a WS row.

Shape Waist:

Dec Row (RS): K2, k2tog, work to last 4 sts, ssk, k2 – 2 sts dec'd.

Rep Dec Row every 28 (28, 28, 30, 30) rows 4 more times – 95 (103, 113, 121, 131) sts.

Work even until pc meas 27 (27½, 28¼, 29, 29¾)" from beg, ending with a WS row. BO all sts.

LEFT FRONT

CO 68 (72, 77, 81, 86) sts.

Set up pattern (RS): Work 30 (34, 39, 43, 48) sts in Gtr St, pm, work row 1 of Cable pattern over rem 38 sts

Next row (WS): Work as est.

Est Patt (RS): Work to marker in St st, slip marker, work to end in Cable Pattern as est. Work even until pc meas 2½" from beg, ending after a WS row.

Shape Waist:

Dec Row (RS): K2, k2tog, work to end as est – 1 st dec'd.

Rep Dec Row every 28 (28, 28, 30, 30) rows 4 more times – 63 (67, 72, 76, 81) sts.

Work even until pc meas 27 (27½, 28¼, 29, 29¾)" from beg, ending after a WS row.

Shape Shoulder (RS): BO 25 (29, 34, 38, 43) sts – 38 sts.

Shape Collar: Work even as est until collar meas 4½" from shoulder. Place all sts on stitch holder or waste yarn. Break yarn leaving approx 20" tail.

RIGHT FRONT

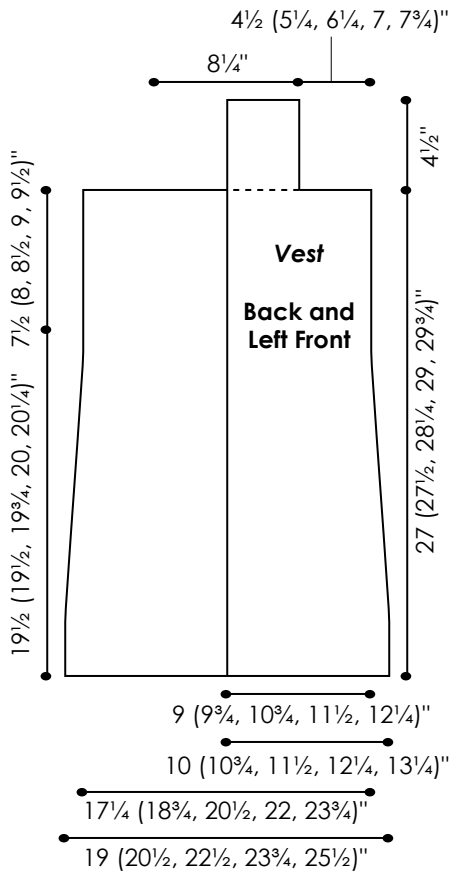
CO 68 (72, 77, 81, 86) sts.

Set up pattern (RS): Work row 1 of Cable pattern over 38 sts, pm, work to end in Gtr St.

Next row(WS): Work as est.

Est Patt (RS): Work as est to marker, slip marker, work to end in St st. Work even until pc meas 2½" from beg, ending after a WS row.

Classic Elite Yarns



Shape Waist:

Dec Row(RS): Work to last 4 sts as est, ssk, k2 – 1 st dec'd.

Rep waist Dec Row every 28 (28, 28, 30, 30) rows 4 more times – 63 (67, 72, 76, 81) sts.

Work even until pc meas 27 (27 1/2, 28 1/4, 29, 29 3/4)" from beg, ending with a RS row.

Shape Shoulder (WS): BO 25 (29, 34, 38, 43) sts – 38 sts.

Shape Collar: Work even as est until collar meas 4 1/2" from shoulder. Place all sts onto st holder or waste yarn. Break yarn.

FINISHING

Block pcs to measurements. Sew shoulder seams. Using the Three Needle BO Method, join the collar sts together. Sew the collar to the back of the neck, easing in any fullness.

Meas along side seam 7 1/2 (8, 8 1/2, 9, 9 1/2)" down from shoulder seam. Place a removable stitch marker into fabric on back and front. Sew side seams from markers to lower edge.

Front Trim: With circular needle and RS facing, beg at lower right front edge, pick-up and knit 150 (152, 156, 159, 163) sts evenly along the right front to the collar seam, pm, pick-up and knit 150 (152, 156, 159, 163) sts evenly along left front to the lower edge – 300 (304, 312, 318, 326) sts. Circular needle is used to accommodate large number of sts; work back and forth in rows. Purl 1 row (WS). BO all sts knitwise.

