

Splash of Color Cowl

designed by Tonia Barry

Liberty Wool

100% washable wool

Liberty Wool is a super-soft, washable wool available in solid and printed colors. With all the great qualities of wool and the ease of machine washability, Liberty Wool knits at a gauge that suits many designs.

Skill Level: Beginner

FINISHED MEASUREMENTS

33½" circumference and 10" tall

YARN

Liberty Wool by **Classic Elite Yarns**

(100% washable wool; 50 g ball = approx 122 yards)

3 balls 7899 Cloudy Dawn (see note)

Note: Cowl can be made with 2 balls if no swatch is made. However, a swatch is always suggested to get an accurate gauge and garment size.

NEEDLE

Circular knitting needle (24") in size US 8 (5 mm) **or size to obtain gauge.**

OTHER MATERIALS

Stitch marker, Tapestry needle

GAUGE

18 sts and 24 rnds = 4" in St st. **Take time to save time, check your gauge.**

ABBREVIATIONS

approx: approximately

BO: bind off

BOR: beginning of round

CO: cast on

g: gram

rnd: round

st(s): stitch(es)

Classic Elite Yarns



PATTERN STITCH

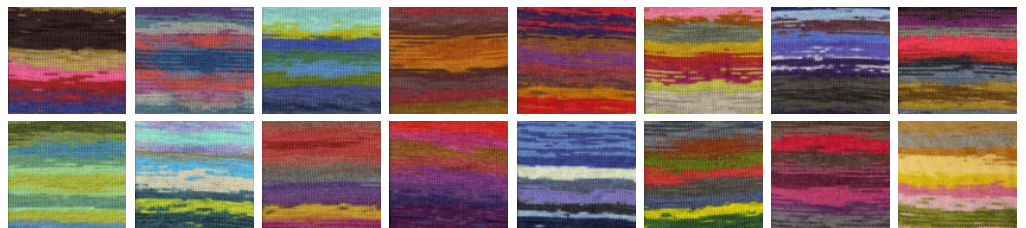
Stockinette Stitch (St st): Knit all sts, every rnd.

COWL

CO 150 sts. Place marker for BOR and join to work in the rnd, being careful not to twist sts. Work in St st until cowl meas approx 10" tall. Loosely BO all sts.

FINISHING

Block to measurements. Use tapestry needle to weave in all ends.



available printed colors of Liberty Wool – also available in 23 solid colors
visit www.classiceliteyarns.com to view all colors

© 2012 Tonia Barry & Classic Elite Yarns • www.classiceliteyarns.com • blog.classiceliteyarns.com • @CEYarns

This pattern is specifically for private use only. All commercial uses involving reproduction of this pattern or duplication of this garment is prohibited unless specifically licensed in writing by copyright owner. For more information about this design, visit www.classiceliteyarns.com/WebLetter/WebLetters.php